

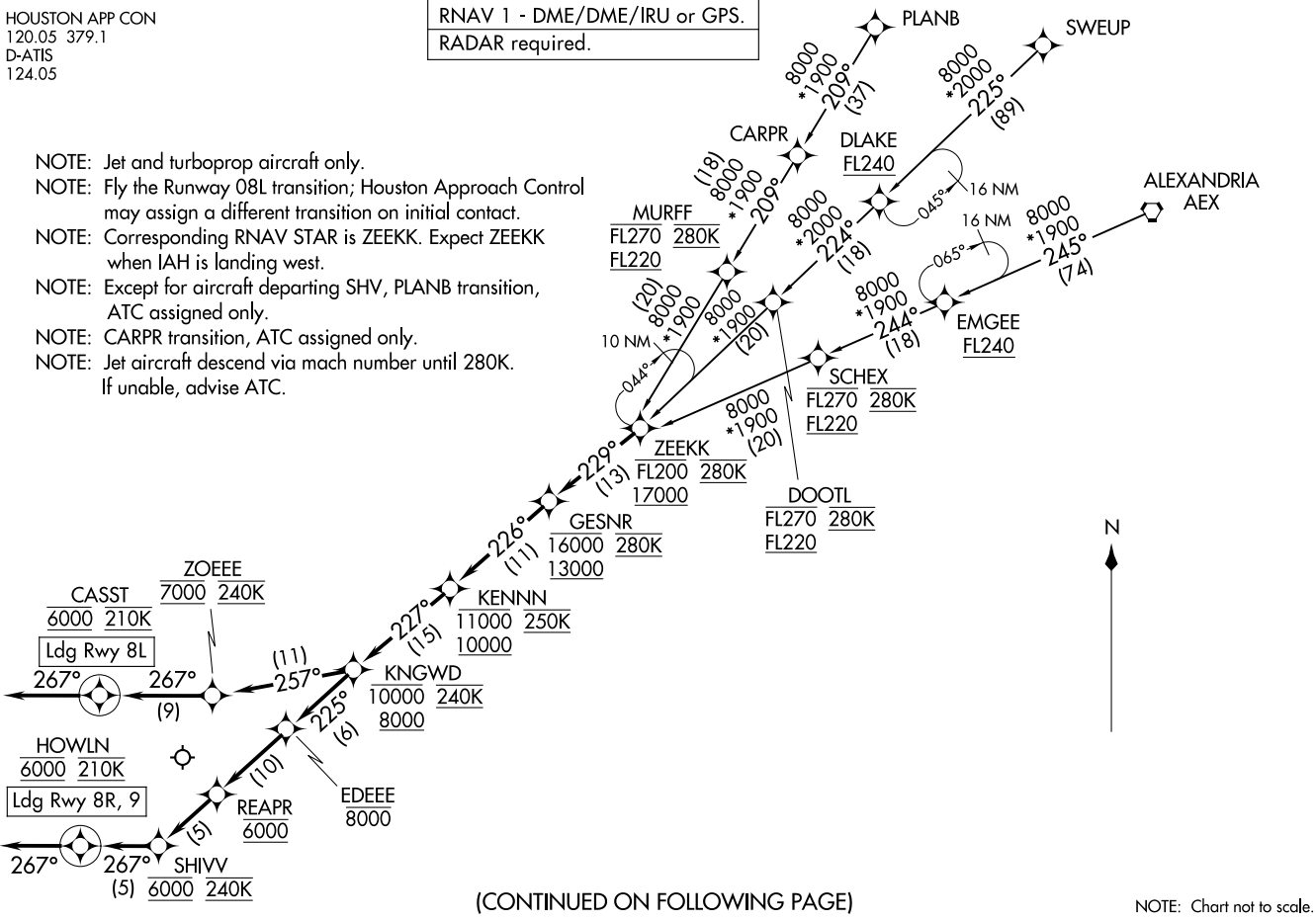
**GESNR TWO ARRIVAL (RNAV)**  
 (ZEEKK, GESNR2) 12JUN25

GEORGE BUSH INTCNL/HOUSTON (IAH)  
 HOUSTON, TEXAS

HOUSTON APP CON  
 120.05 379.1  
 D-ATIS  
 124.05

RNAV 1 - DME/DME/IRU or GPS.  
 RADAR required.

- NOTE: Jet and turboprop aircraft only.
- NOTE: Fly the Runway 08L transition; Houston Approach Control may assign a different transition on initial contact.
- NOTE: Corresponding RNAV STAR is ZEEKK. Expect ZEEKK when IAH is landing west.
- NOTE: Except for aircraft departing SHV, PLANB transition, ATC assigned only.
- NOTE: CARPR transition, ATC assigned only.
- NOTE: Jet aircraft descend via mach number until 280K. If unable, advise ATC.



(CONTINUED ON FOLLOWING PAGE)

NOTE: Chart not to scale.

**GESNR TWO ARRIVAL (RNAV)**  
 (ZEEKK, GESNR2) 25163

GEORGE BUSH INTCNL/HOUSTON (IAH)  
 HOUSTON, TEXAS

AL-546 (FAA)

ARRIVAL ROUTE DESCRIPTION

ALEXANDRIA TRANSITION (AEX.GESNR2)

CARPR TRANSITION (CARPR.GESNR2)

PLANB TRANSITION (PLANB.GESNR2)

SWEUP TRANSITION (SWEUP.GESNR2)

From ZEEKK on track 229° to cross GESNR between 13000 and 16000 and at 280K.

LANDING RUNWAY 8L: From GESNR on track 226° to cross KENNN between 10000 and 11000 and at 250K, then on track 227° to cross KINGWD between 8000 and 10000 and at 240K, then on track 257° to cross ZOEEE at 7000 and at 240K, then on track 267° to cross CASST at 6000 and at 210K, then on track 267°. Expect RADAR vectors to final approach course.

LANDING RUNWAYS 8R/9: From GESNR on track 226° to cross KENNN between 10000 and 11000 and at 250K, then on track 227° to cross KINGWD between 8000 and 10000 and at 240K, then on track 225° to cross EDEEE at or below 8000, then on track 225° to cross REAPR at 6000, then on track 225° to cross SHIVV at 6000 and at 240K, then on track 267° to cross HOWLN at 6000 and at 210K, then on track 267°. Expect RADAR vectors to final approach course.

SC-5, 14 MAY 2026 to 11 JUN 2026

SC-5, 14 MAY 2026 to 11 JUN 2026