

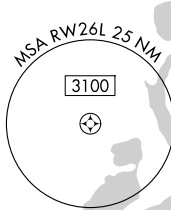
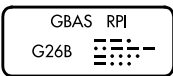
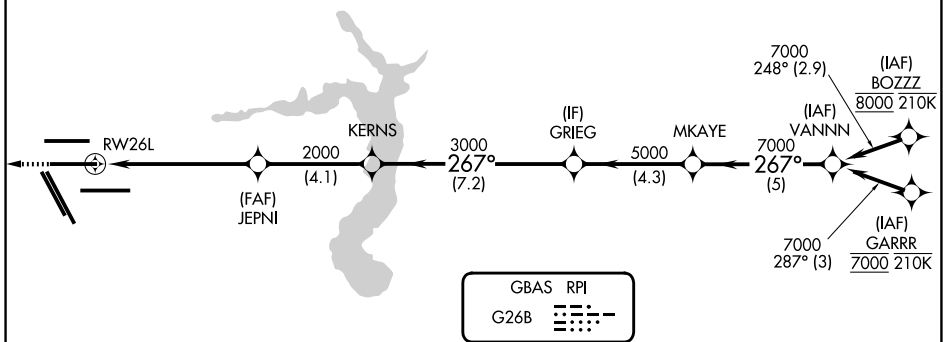
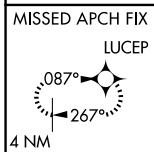
GBAS CH 20662 G26B	APP CRS 267°	Rwy Ldg TDZE Apt Elev	9402 95 96
--	------------------------	-----------------------------	---------------------------------------

GLS RWY 26L

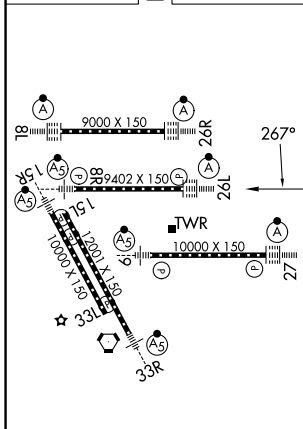
GEORGE BUSH INTCNL/HOUSTON (IAH)

RNP APCH - GPS.	ALSF-2	MISSED APPROACH: Climb to 3000 direct LUCEP and hold.
<p>Simultaneous approach authorized. Use of FD or AP required during simultaneous operations. Autopilot coupled approach NA below 295.</p> <p>NA</p>		

D-ATIS 124.05	HOUSTON APP CON 120.05 379.1 E 124.35 316.15 W	HOUSTON TOWER 125.35 290.2	GND CON 118.575
-------------------------	--	--------------------------------------	---------------------------

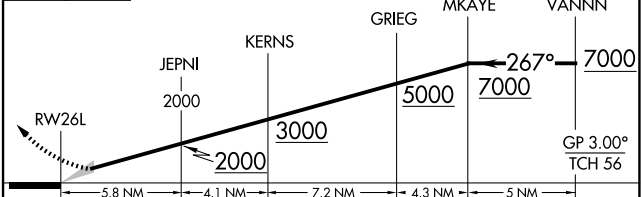


ELEV 96	D	TDZE 95
---------	----------	---------



TDZ/CL Rwy 8R, 8L, 15R, 26R, 26L, 27 and 33L
HIRL all Rwy

3000 LUCEP VGSi and GLS glidepath not coincident (VGSi Angle 3.00/TCH 71).



CATEGORY	A	B	C	D
GLS DA	295/18 200 (200-1/2)			

SC-5, 14 MAY 2026 to 11 JUN 2026

SC-5, 14 MAY 2026 to 11 JUN 2026