

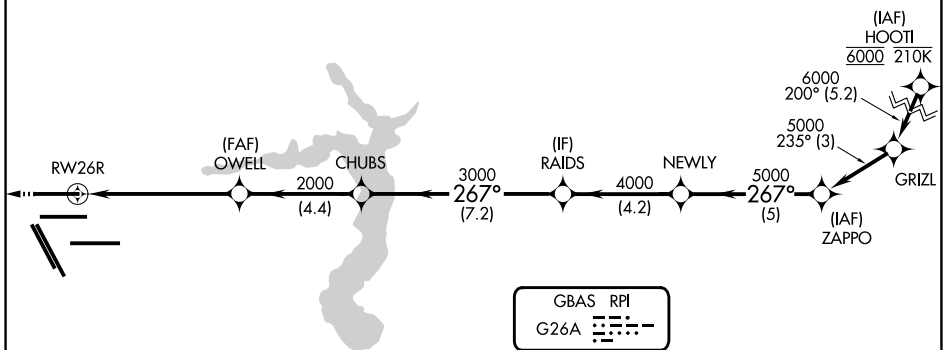
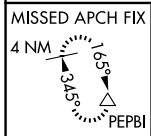
GBAS CH 21484 G26A	APP CRS 267°	Rwy Ldg TDZE Apt Elev	9000 95 96
--	------------------------	-----------------------------	---------------------------------------

GLS RWY 26R

GEORGE BUSH INTCNL/HOUSTON (IAH)

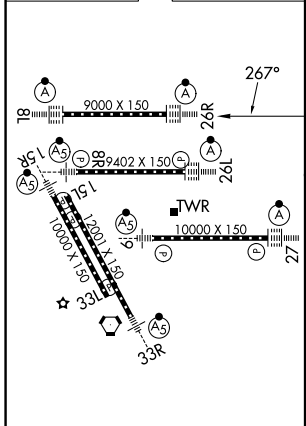
RNP APCH - GPS.		ALSIF-2	MISSED APPROACH: Climb to 600 then climbing right turn to 3000 direct PEPBI and hold.
Simultaneous approach authorized. Use of FD or AP required during simultaneous operations. Autopilot coupled approach NA below 295.			

D-ATIS 124.05	HOUSTON APP CON 120.05 379.1 E 124.35 316.15 W	HOUSTON TOWER 120.725 290.2	GND CON 118.575
-------------------------	--	---------------------------------------	---------------------------

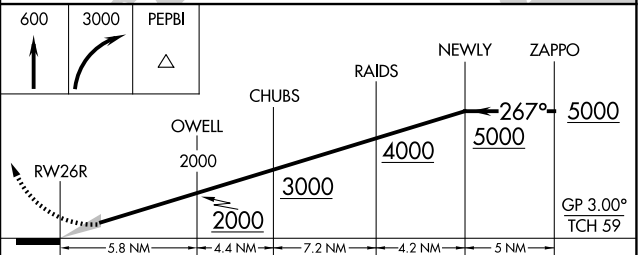


GBAS RPI
G26A

ELEV 96	D	TDZE 95
---------	----------	---------



TDZ/CL Rwy's 8R, 8L, 15R, 26R, 26L, 27 and 33L
HIRL all Rwy's



CATEGORY	A	B	C	D
GLS DA	295/18 200 (200-1/2)			

SC-5, 14 MAY 2026 to 11 JUN 2026

SC-5, 14 MAY 2026 to 11 JUN 2026