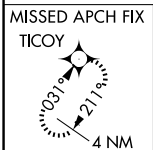
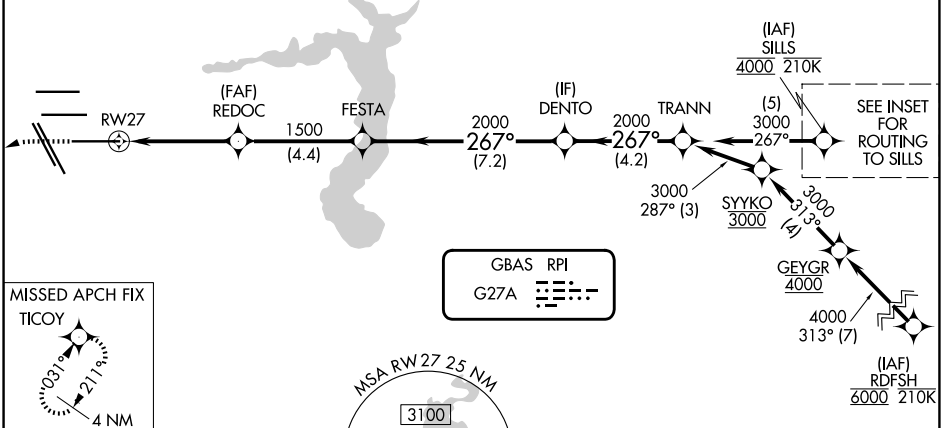
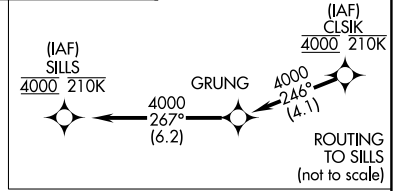


| | | | |
|--|------------------------|-----------------------------|--|
| GBAS CH 22306 G27A | APP CRS 267° | Rwy Ldg TDZE Apt Elev | 10000 86 96 |
|--|------------------------|-----------------------------|--|

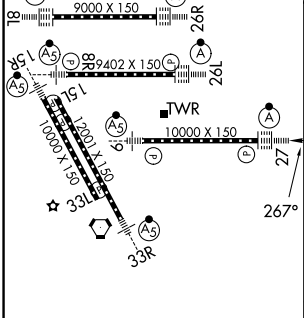
GLS RWY 27

GEORGE BUSH INTCNL/HOUSTON (IAH)

| | | | |
|---|--|--------------------------------------|--|
| RNP APCH - GPS. | | ALSIF-2 | MISSED APPROACH: Climb to 560 then climbing left turn to 3100 direct TICOY and hold. |
| Simultaneous approach authorized. Use of FD or AP required during simultaneous operations. Autopilot coupled approach NA below 286. | | | |
| D-ATIS 124.05 | HOUSTON APP CON 120.05 379.1 E 124.35 316.15 W | HOUSTON TOWER 135.15 290.2 | GND CON 118.575 |

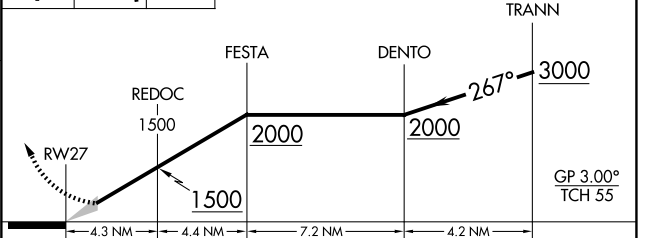


| | | |
|---------|----------|---------|
| ELEV 96 | D | TDZE 86 |
|---------|----------|---------|



TDZ/CL Rwy 8R, 8L, 15R, 26R, 26L, 27 and 33L
HIRL all Rwy

560 3100 TICOY
VGSI and GLS glidepath not coincident (VGSI Angle 3.00/TCH 70).



| | | | | |
|----------|----------------------|---|---|---|
| CATEGORY | A | B | C | D |
| GLS DA | 286/18 200 (200-1/2) | | | |

SC-5, 14 MAY 2026 to 11 JUN 2026

SC-5, 14 MAY 2026 to 11 JUN 2026