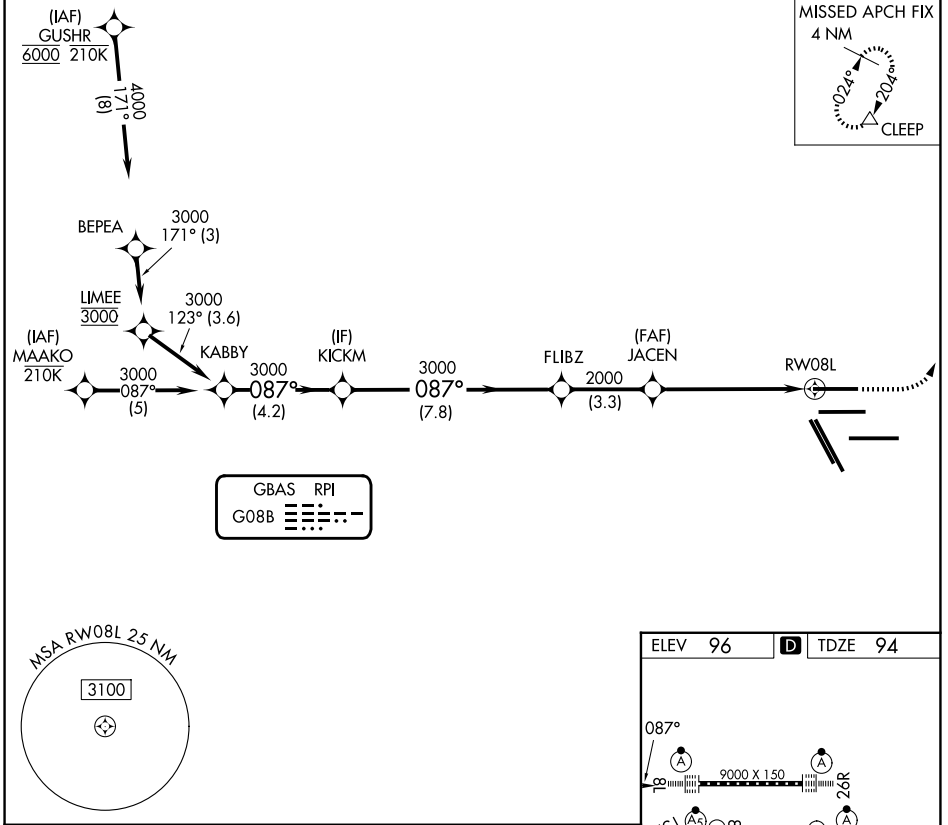


GBAS CH <b>21073</b> <b>G08B</b>	APP CRS <b>087°</b>	Rwy Ldg TDZE Apt Elev	<b>9000</b> <b>94</b> <b>96</b>
--	------------------------	-----------------------------	---------------------------------------

# GLS RWY 8L

GEORGE BUSH INTCNL/HOUSTON (IAH)

RNP APCH - GPS.		ALSIF-2	MISSED APPROACH: Climb to 580 then climbing left turn to 4000 direct CLEEP and hold.
<p>▼ Use of FD or AP required during simultaneous operations. Autopilot coupled</p> <p>▲ NA approach NA below 294. Simultaneous approach authorized.</p>			
D-ATIS <b>124.05</b>	HOUSTON APP CON <b>120.05 379.1 E</b> <b>124.35 316.15 W</b>	HOUSTON TOWER <b>120.725 290.2</b>	GND CON <b>118.575</b>



SC-5, 14 MAY 2026 to 11 JUN 2026

SC-5, 14 MAY 2026 to 11 JUN 2026

