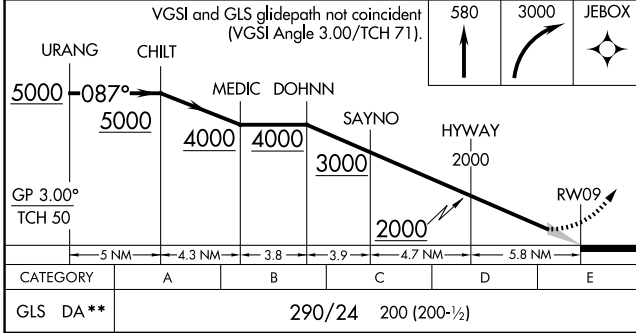
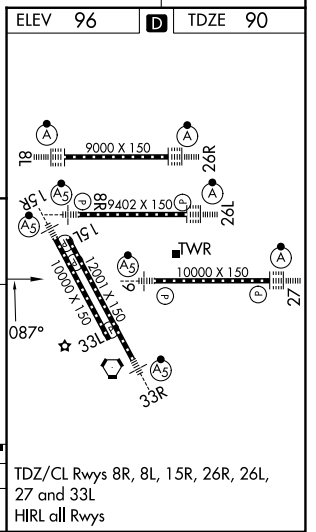
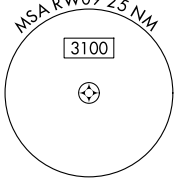
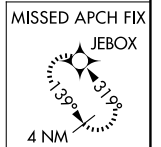
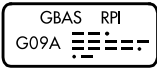


GBAS CH <b>21895</b> RPI <b>G09A</b>	APP CRS <b>087°</b>	Rwy Ldg <b>10000</b> TDZE <b>90</b> Apt Elev <b>96</b>
--	------------------------	--

# GLS RWY 9

GEORGE BUSH INTCNL/HOUSTON (IAH)

RNP APCH - GPS.		MALSR	MISSED APPROACH: Climb to 580 then climbing right turn to 3000 direct JEBOX and hold.
<p>Simultaneous approach authorized. Use of FD or AP required during simultaneous operations. Autopilot coupled approach NA below 290. ** RVR 1800 authorized with use of FD or AP or HUD to DA.</p>			
D-ATIS <b>124.05</b>	HOUSTON APP CON <b>120.05 379.1 E</b> <b>124.35 316.15 W</b>	HOUSTON TOWER <b>135.15 290.2</b>	GND CON <b>118.575</b>



TDZ/CL Rwy's 8R, 8L, 15R, 26R, 26L, 27 and 33L  
HIRL all Rwy's

SC-5, 14 MAY 2026 to 11 JUN 2026

SC-5, 14 MAY 2026 to 11 JUN 2026