

# HTOWN THREE ARRIVAL (RNAV)

HOUSTON APP CON  
119.175 291.675  
D-ATIS  
124.05

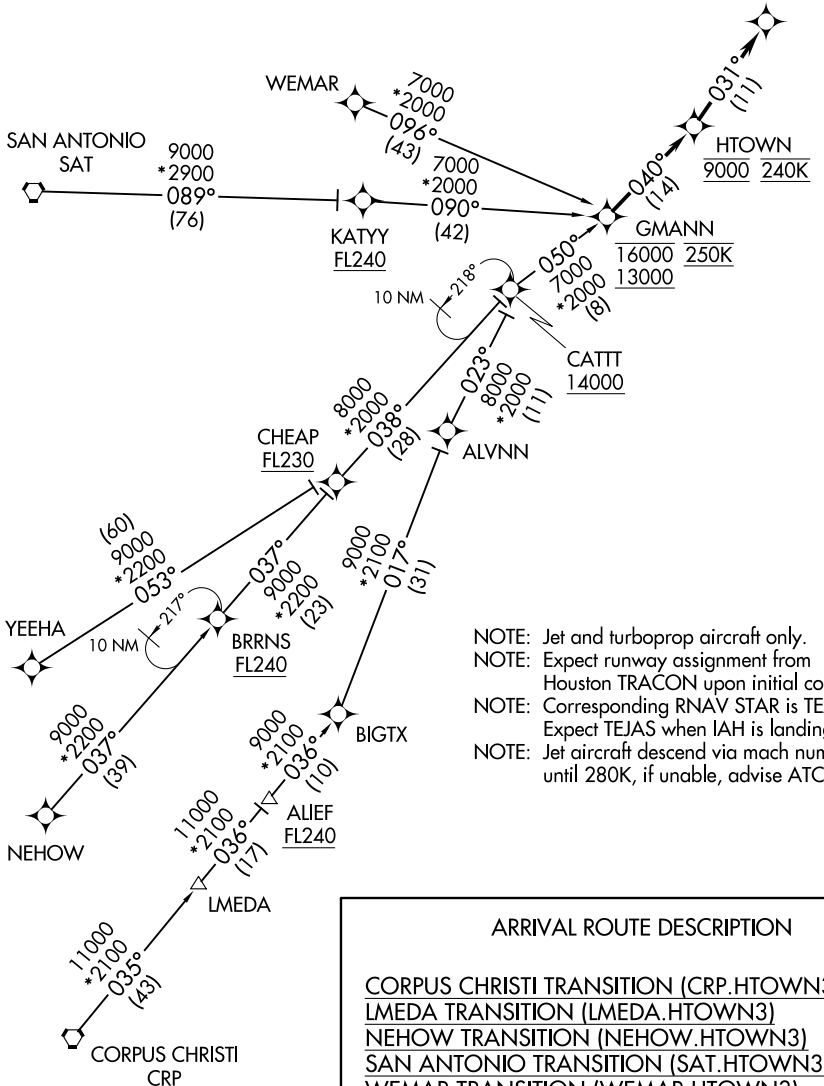
RNAV 1 - DME/DME/IRU or GPS.

RADAR required.

WDLNS

7000 210K

Ldg Rwy 8R



- NOTE: Jet and turboprop aircraft only.
- NOTE: Expect runway assignment from Houston TRACON upon initial contact.
- NOTE: Corresponding RNAV STAR is TEJAS. Expect TEJAS when IAH is landing west.
- NOTE: Jet aircraft descend via mach number until 280K, if unable, advise ATC.

### ARRIVAL ROUTE DESCRIPTION

- CORPUS CHRISTI TRANSITION (CRP.HTOWN3)
- LMEDA TRANSITION (LMEDA.HTOWN3)
- NEHOW TRANSITION (NEHOW.HTOWN3)
- SAN ANTONIO TRANSITION (SAT.HTOWN3)
- WEMAR TRANSITION (WEMAR.HTOWN3)
- YEEHA TRANSITION (YEEHA.HTOWN3)

From GMANN on track 040° to cross HTOWN at 9000 and at 240K, then on track 031° to cross WDLNS at 7000 and at 210K. Expect ILS or LOC RWY 8R.

NOTE: Chart not to scale.

SC-5, 14 MAY 2026 to 11 JUN 2026

SC-5, 14 MAY 2026 to 11 JUN 2026