

LOC/DME I-JYV <b>109.7</b> Chan <b>34</b>	APP CRS <b>267°</b>	Rwy Ldg TDZE Apt Elev	<b>9402</b> <b>95</b> <b>96</b>
---	------------------------	-----------------------------	---------------------------------------

# ILS RWY 26L (CAT II & III)

GEORGE BUSH INTCNL/HOUSTON (IAH)

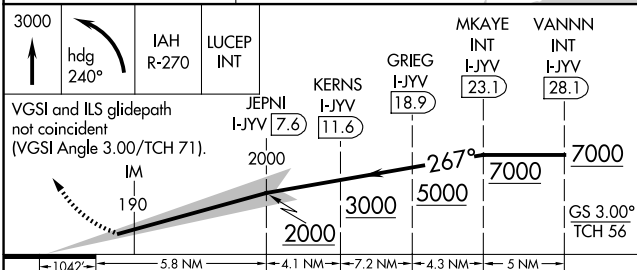
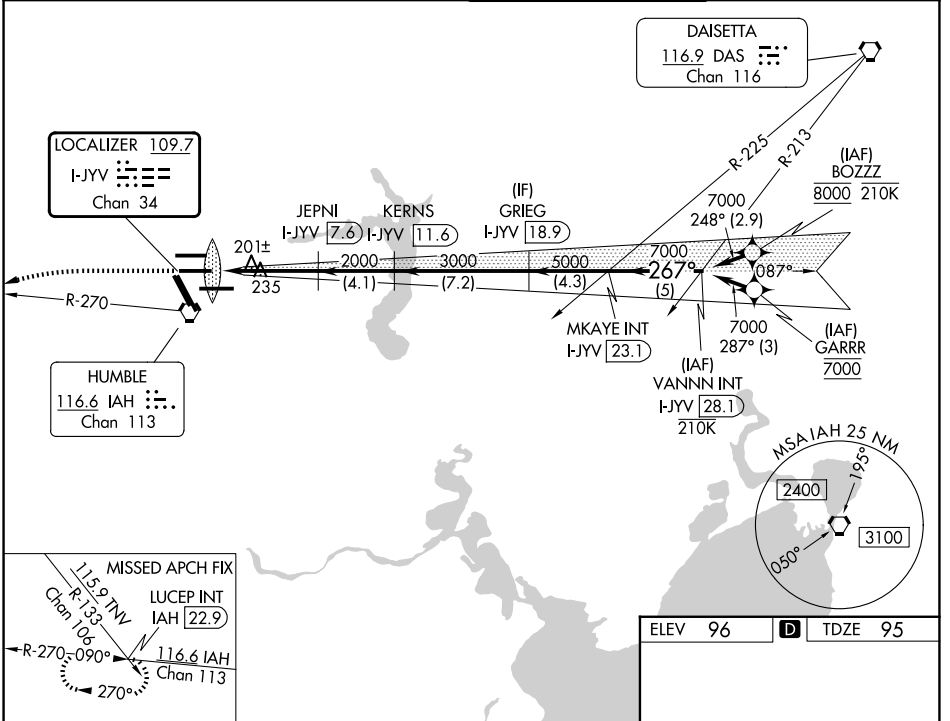
DME required. From BOZZZ, GARRR: RNAV 1-GPS required.

Simultaneous approach authorized with Rwy 26R and Rwy 27.  
Cat II: RVR 1000 authorized with specific OPSPEC, MSPEC, or LOA approval and use of outland or HUD to touchdown.

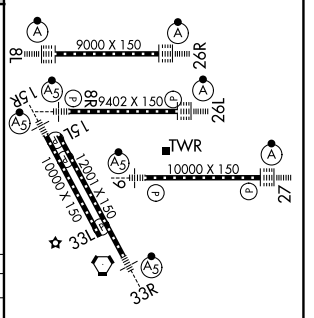
ALSF-2

MISSED APPROACH: Climb to 3000 then left turn heading 240° and IAH VORTAC R-270 to LUCEP INT/IAH 22.9 DME and hold.

D-ATIS <b>124.05</b>	HOUSTON APP CON <b>120.05 379.1 E</b> <b>124.35 316.15 W</b>	HOUSTON TOWER <b>125.35 290.2</b>	GND CON <b>118.575</b>
-------------------------	--	--------------------------------------	---------------------------



ELEV 96	TDZE 95
---------	---------



CATEGORY	A	B	C	D
S-ILS 26L	CAT II RA 100/12		100 DA 195	
S-ILS 26L	CAT III RVR 06			

## CATEGORY II & III ILS - SPECIAL AIRCREW & AIRCRAFT CERTIFICATION REQUIRED

TDZ/CL Rwsy 8R, 8L, 15R, 26R, 26L, 27 and 33L  
HIRL all Rwsy

SC-5, 14 MAY 2026 to 11 JUN 2026

SC-5, 14 MAY 2026 to 11 JUN 2026