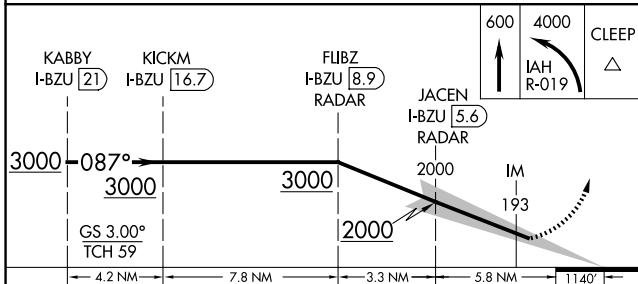
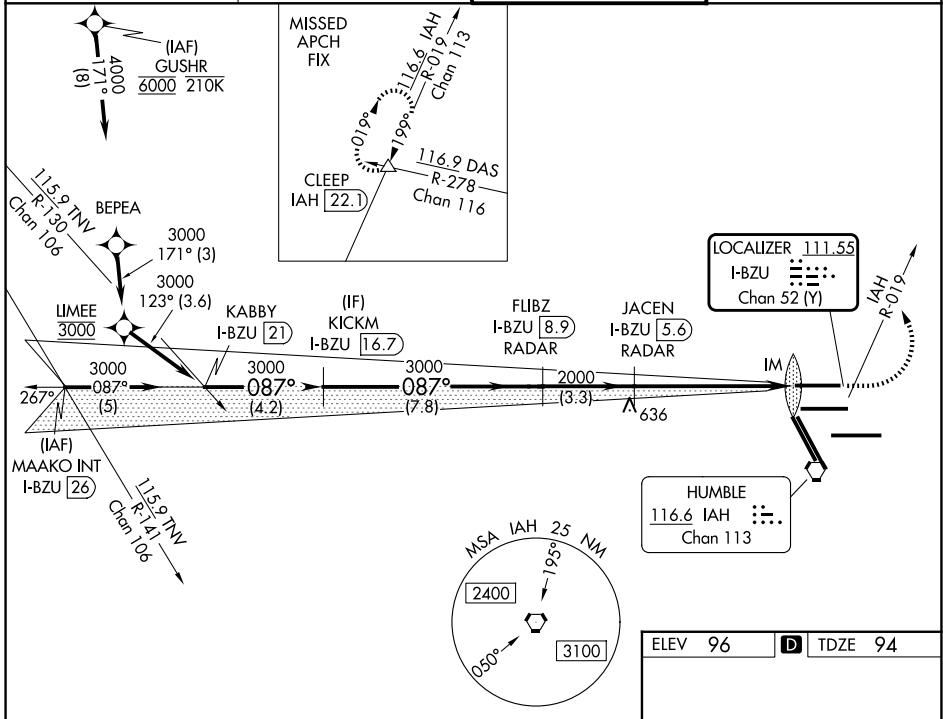


LOC/DME I-BZU 111.55 Chan 52 (Y)	APP CRS 087°	Rwy Ldg TDZE Apt Elev	9000 94 96
---	------------------------	-----------------------------	---------------------------------------

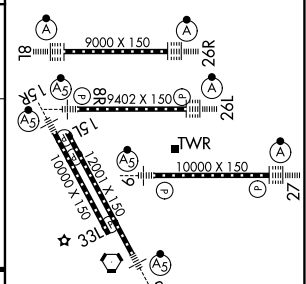
ILS RWY 8L (CAT II & III)
GEORGE BUSH INTCNL/HOUSTON (IAH)

DME required. From GUSHR: RNAV 1-GPS required.	ALSIF-2 	MISSED APPROACH: Climb to 600 then climbing left turn to 4000 on IAH VORTAC R-019 to CLEEP INT/IAH 22.1 DME and hold.
--	-------------	---

D-ATIS 124.05	HOUSTON APP CON 120.05 379.1 E 124.35 316.15 W	HOUSTON TOWER 120.725 290.2	GND CON 118.575
-------------------------	--	---------------------------------------	---------------------------



ELEV 96	D TDZE 94
---------	------------------



CATEGORY	A	B	C	D
S-ILS 8L	CAT II RA 108/12 100 DA 194			
S-ILS 8L	CAT III RVR 06			

CATEGORY II & III ILS - SPECIAL AIRCREW & AIRCRAFT CERTIFICATION REQUIRED

TDZ/CL Rwy's 8R, 8L, 15R, 26R, 26L, 27 and 33L
HIRL all Rwy's