

LOC/DME I-BZU <b>111.55</b> Chan 52 (Y)	APP CRS <b>087°</b>	Rwy Ldg TDZE Apt Elev	<b>9000</b> <b>94</b> <b>96</b>
---	------------------------	-----------------------------	---------------------------------------

# ILS RWY 8L (SA CAT I)

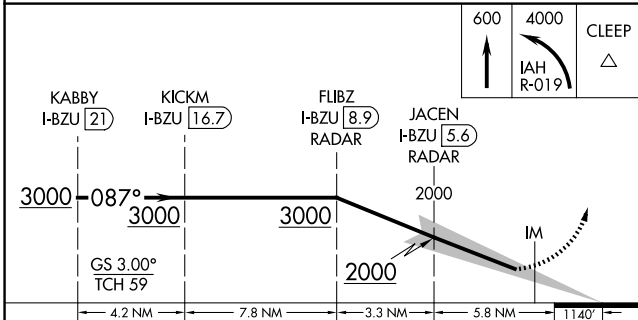
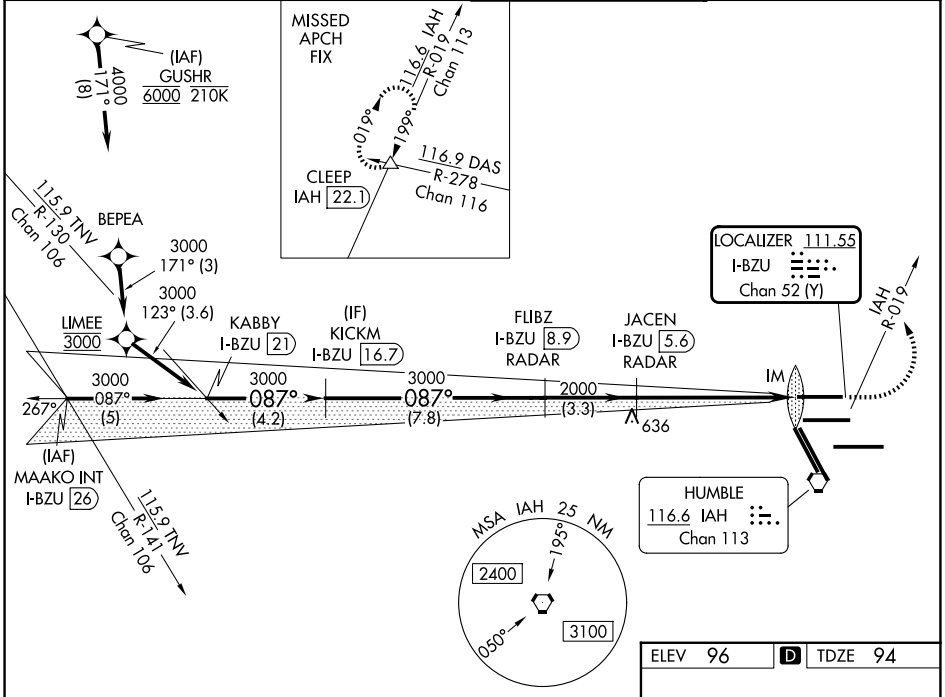
GEORGE BUSH INTCNL/HOUSTON (IAH)

DME required. From GUSHR: RNAV 1-GPS required.

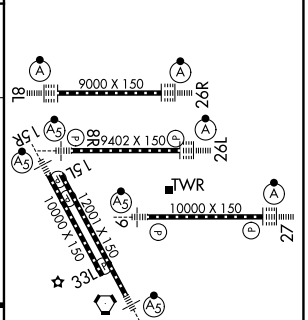
ALSF-2 MISSED APPROACH: Climb to 600 then climbing left turn to 4000 on IAH VORTAC R-019 to CLEEP INT/IAH 22.1 DME and hold.

Simultaneous approach authorized with Rwy 8R and Rwy 9. Requires specific OPSPEC, MSPEC, or LOA approval and use of HUD to DH.

D-ATIS <b>124.05</b>	HOUSTON APP CON <b>120.05 379.1 E</b> <b>124.35 316.15 W</b>	HOUSTON TOWER <b>120.725 290.2</b>	GND CON <b>118.575</b>
-------------------------	--	---------------------------------------	---------------------------



ELEV 96	<b>D</b> TDZE 94
---------	------------------



CATEGORY	A	B	C	D
S-ILS 8L	RA 158/14		150 DA 244	

**SA CATEGORY I ILS - SPECIAL AIRCREW & AIRCRAFT CERTIFICATION REQUIRED**

TDZ/CL Rwy 8R, 8L, 15R, 26R, 26L, 27 and 33L  
HIRL all Rwy's

SC-5, 14 MAY 2026 to 11 JUN 2026

SC-5, 14 MAY 2026 to 11 JUN 2026