

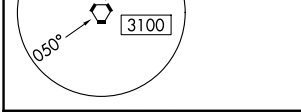
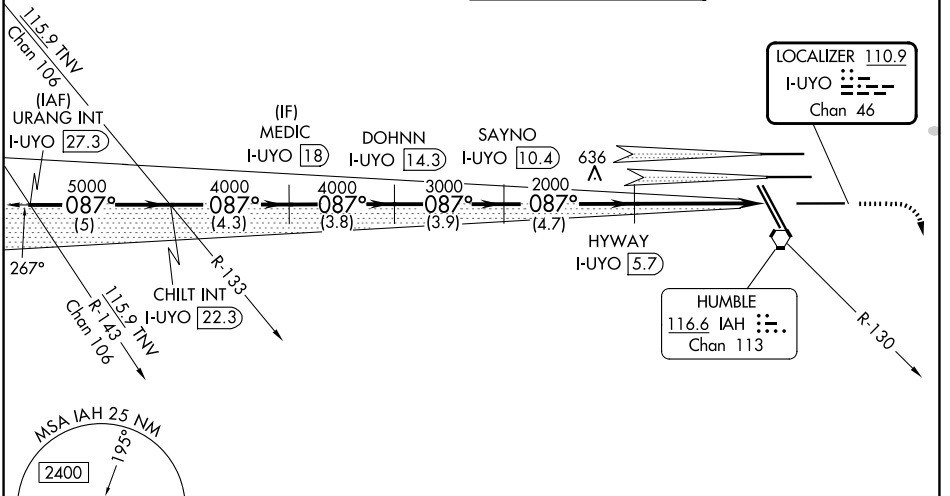
LOC/DME I-UYO <b>110.9</b> Chan <b>46</b>	APP CRS <b>087°</b>	Rwy Ldg <b>10000</b> TDZE <b>90</b> Apt Elev <b>96</b>
---	------------------------	--

# ILS RWY 9 (SA CAT I & II)

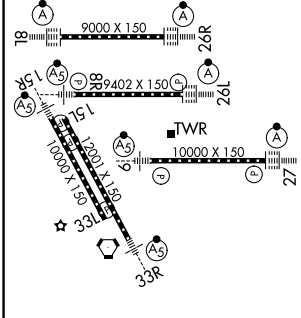
GEORGE BUSH INTCNL/HOUSTON (IAH)

DME required. RADAR required for procedure entry.	MALS R	MISSED APPROACH: Climb to 580 then climbing right turn to 3000 on IAH VORTAC R-130 to JEBOX/IAH 18.3 DME and hold.
---	--------	--

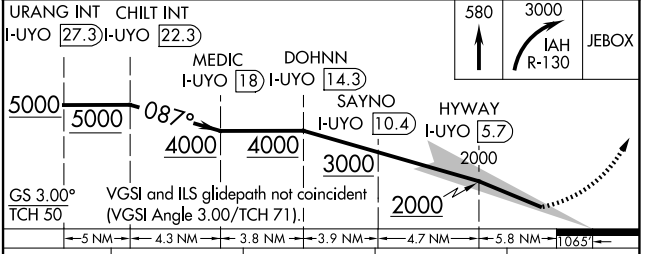
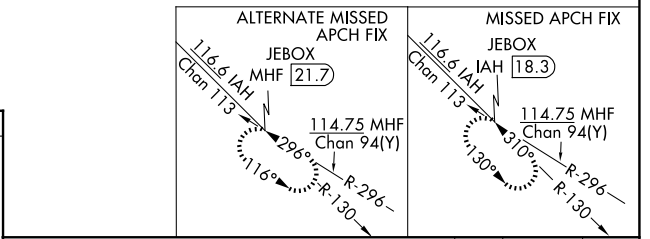
D-ATIS <b>124.05</b>	HOUSTON APP CON <b>120.05 379.1 E</b> <b>124.35 316.15 W</b>	HOUSTON TOWER <b>135.15 290.2</b>	GND CON <b>118.575</b>
-------------------------	--	--------------------------------------	---------------------------



ELEV 96	<b>D</b>	TDZE 90
---------	----------	---------



TDZ/CL Rwy 8R, 8L, 15R, 26R, 26L, 27 and 33L  
HIRL all Rwy 9



URANG INT I-UYO 27.3	CHILINT I-UYO 22.3	MEDIC I-UYO 18	DOYNN I-UYO 14.3	SAYNO I-UYO 10.4	HYWAY I-UYO 5.7
----------------------	--------------------	----------------	------------------	------------------	-----------------

GS 3.00°	VGS and ILS glidepath not coincident (VGS Angle 3.00/TCH 71.1)						
TCH 50	5 NM	4.3 NM	3.8 NM	3.9 NM	4.7 NM	5.8 NM	10.65
CATEGORY	A		B		C		D
S-ILS 9	SA CAT I RA 148/14		150	DA 240			
S-ILS 9	SA CAT II RA 98/12		100	DA 190			

**SA CATEGORY I and II ILS SPECIAL AIRCREW & AIRCRAFT CERTIFICATION REQUIRED**

SC-5, 14 MAY 2026 to 11 JUN 2026

SC-5, 14 MAY 2026 to 11 JUN 2026