

LOC/DME I-GHI 110.9 Chan 46	APP CRS 267°	Rwy Ldg 10000 TDZE 86 Apt Elev 96
-------------------------------------------------	------------------------	--------------------------------------------------------------

ILS or LOC RWY 27

GEORGE BUSH INTCNL/HOUSTON (IAH)

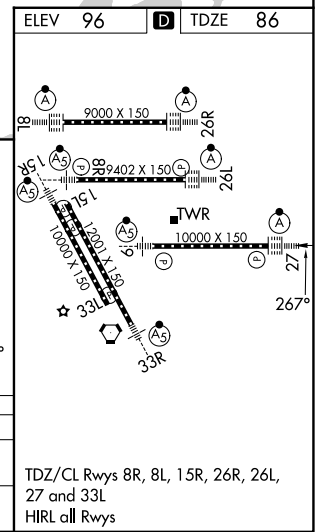
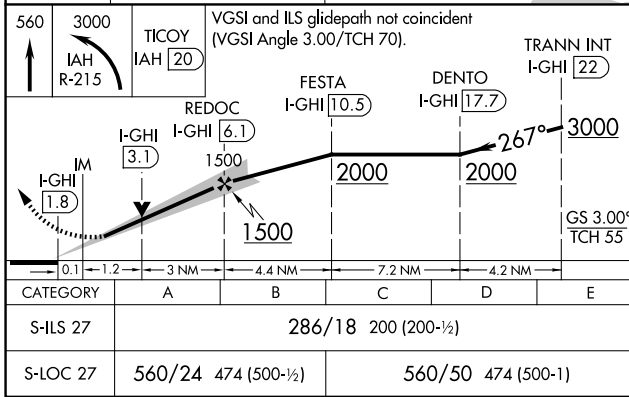
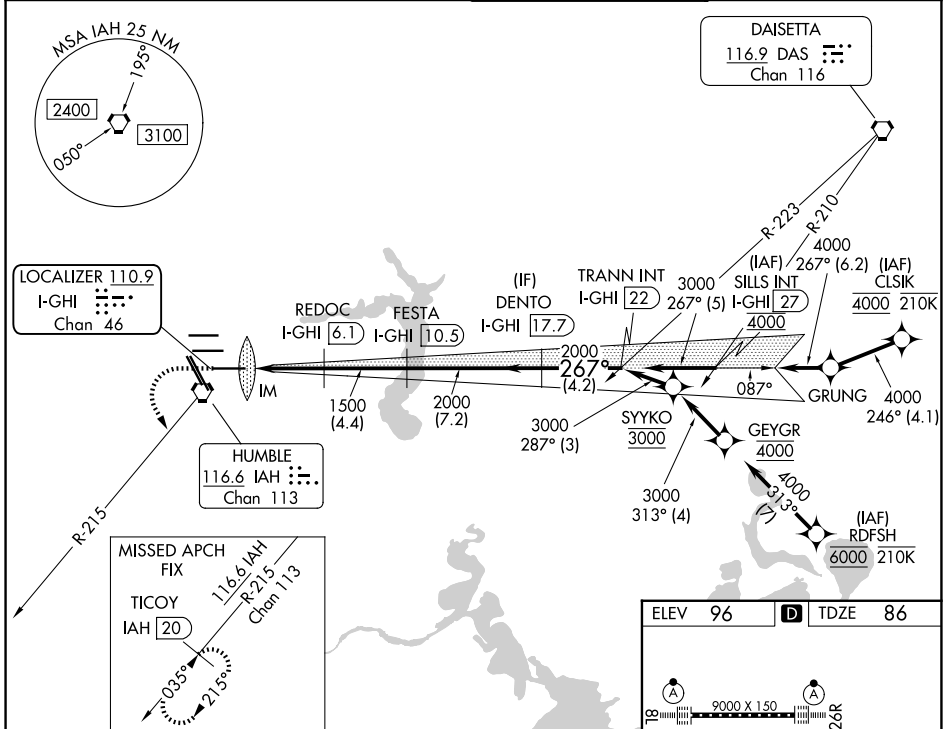
RNAV 1-GPS or RADAR required for procedure entry.
DME required.

Simultaneous approach authorized. Use of FD or AP required during simultaneous operations. For inop ALS, increase S-ILS 27 Cat E visibility to RVR 4000 and S-LOC 27 Cat C-E visibility to 1 1/2 SM.

ALSF-2

MISSED APPROACH: Climb to 560 then climbing left turn to 3000 on IAH VORTAC R-215 to TICCOY/IAH 20 DME and hold.

D-ATIS 124.05	HOUSTON APP CON 120.05 379.1 E 124.35 316.15 W	HOUSTON TOWER 135.15 290.2	GND CON 118.575
-------------------------	--------------------------------------------------------------------	--------------------------------------	---------------------------



HOUSTON, TEXAS Amdt 11D 12AUG21	GEORGE BUSH INTCNL/HOUSTON (IAH) ILS or LOC RWY 27
------------------------------------	-------------------------------------------------------

29°59'N-95°20'W

SC-5, 14 MAY 2026 to 11 JUN 2026

SC-5, 14 MAY 2026 to 11 JUN 2026