

HOUSTON, TEXAS

AL-5461 (FAA)

25275

LOC/DME I-IAH 109.7 Chan 34	APP CRS 087°	Rwy Ldg 9402 TDZE 95 Apt Elev 96
---	------------------------	---


ILS or LOC RWY 8R

GEORGE BUSH INTCNL/HOUSTON (IAH)

RNAV 1-GPS or RADAR required for procedure entry, DME.

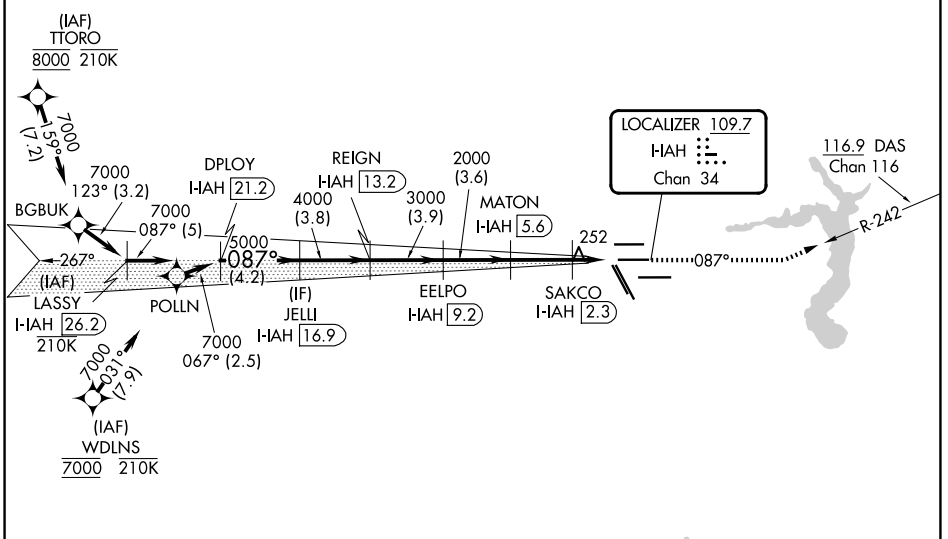
Simultaneous approach authorized. For inop ALS, increase S-LOC 8R Cat C/D/E visibility to 1 $\frac{1}{2}$ SM. For inop ALS, increase S-ILS 8R Cat E visibility to RVR 4000.

MALSR



MISSED APPROACH: Climb to 3000 on heading 087° and on DAS VORTAC R-242 to DAS VORTAC and hold.

D-ATIS 124.05	HOUSTON APP CON 120.05 379.1 E 124.35 316.15 W	HOUSTON TOWER 125.35 290.2	GND CON 118.575
-------------------------	--	--------------------------------------	---------------------------



SC-5, 14 MAY 2026 to 11 JUN 2026

SC-5, 14 MAY 2026 to 11 JUN 2026

ELEV 96	D	TDZE 95
---------	----------	---------

