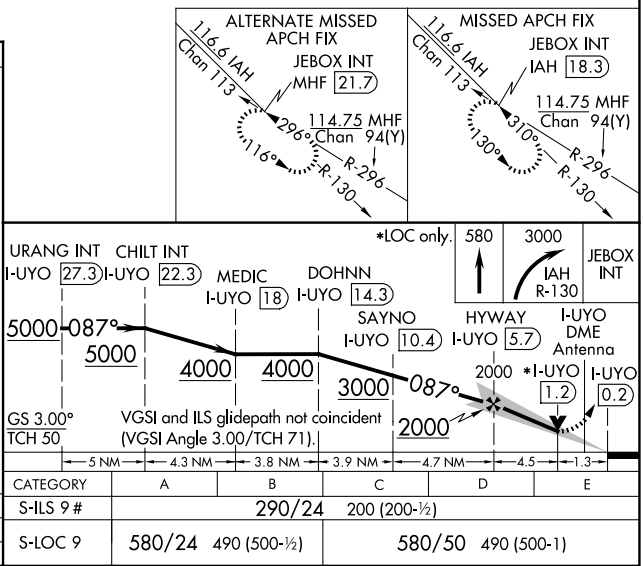
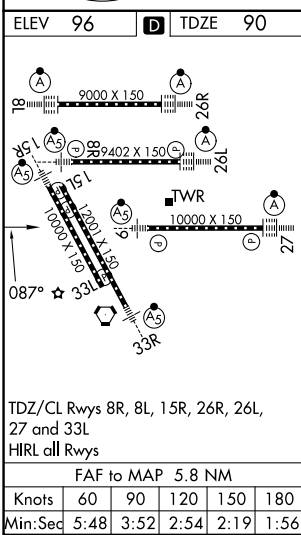
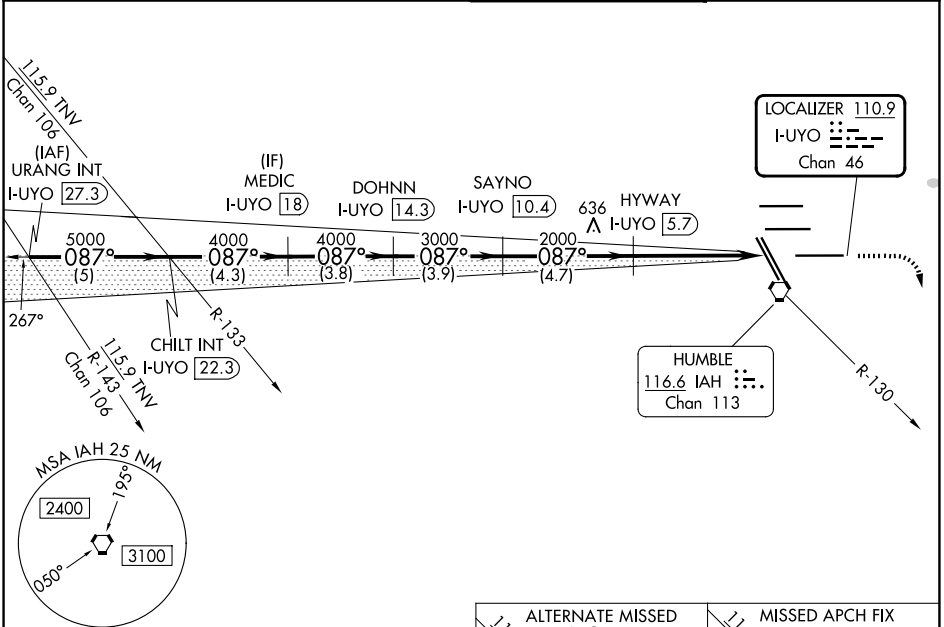


LOC/DME I-UYO 110.9 Chan 46	APP CRS 087°	Rwy Ldg 10000 TDZE 90 Apt Elev 96
---	------------------------	--

ILS or LOC RWY 9

GEORGE BUSH INTCNL/HOUSTON (IAH)

DME required. RADAR required for procedure entry.		MALSR	MISSED APPROACH: Climb to 580 then climbing right turn to 3000 on IAH VORTAC R-130 to JEBOX/IAH 18.3 DME and hold.
Simultaneous approach authorized with Rwy 8L/R. # RVR 1800 authorized with the use of FD or AP or HUD to DA.			
D-ATIS 124.05	HOUSTON APP CON 120.05 379.1 E 124.35 316.15 W	HOUSTON TOWER 135.15 290.2	GND CON 118.575



SC-5, 14 MAY 2026 to 11 JUN 2026

SC-5, 14 MAY 2026 to 11 JUN 2026