

(LFK4.LFK) 25331

AL-5461 (FAA)

GEORGE BUSH INTCNL/HOUSTON (IAH)
HOUSTON, TEXAS

LUFKIN FOUR DEPARTURE

HOUSTON DEP CON
 132.25 285.425
 D-ATIS
 124.05
 CLNC DEL
 128.1
 CPDLC
 GND CON
 118.575 (8L/R, 26L/R, 9/27)
 121.7 (15L/R, 33L/R)
 HOUSTON TOWER
 120.725 290.2 (8L/26R)
 125.35 290.2 (8R/26L)
 127.3 288.25 (15L/R, 33L/R)
 135.15 290.2 (9/27)

**TOP ALTITUDE:
16000**

LITTLE ROCK
 115.1 LIT : : : :
 Chan 98

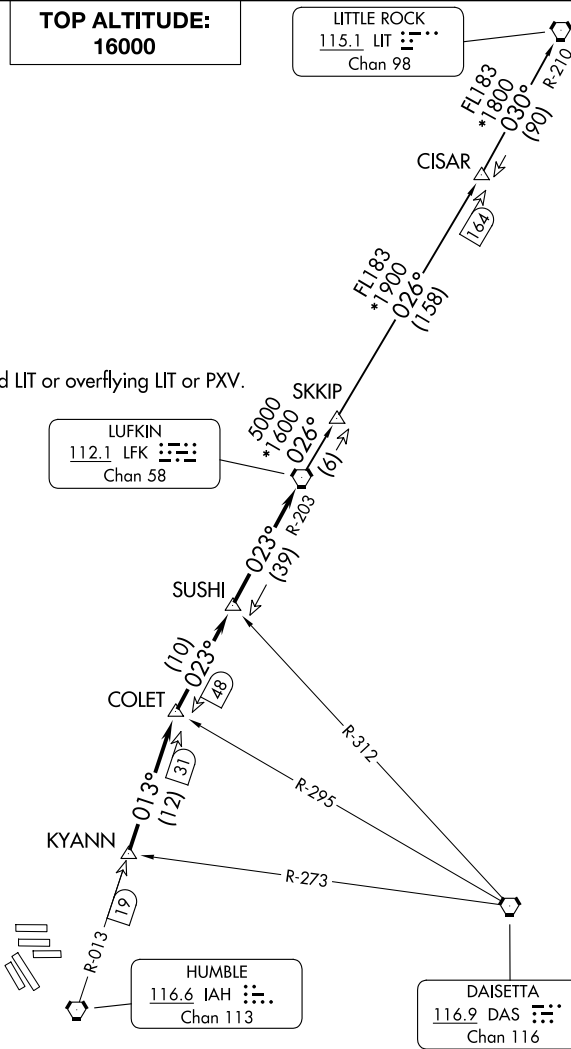
RADAR and DME required.

NOTE: For aircraft destined LIT or overflying LIT or PXV.

LUFKIN
 112.1 LFK : : : :
 Chan 58

HUMBLE
 116.6 IAH : : : :
 Chan 113

DAISETTA
 116.9 DAS : : : :
 Chan 116



TAKEOFF MINIMUMS:
 Rwy 8L/R, 9, 15L/R, 26L/R, 27, 33L/R: Standard.

NOTE: Chart not to scale.

(CONTINUED ON FOLLOWING PAGE)

LUFKIN FOUR DEPARTURE

(LFK4.LFK) 27NOV25

HOUSTON, TEXAS
GEORGE BUSH INTCNL/HOUSTON (IAH)

SC-5, 14 MAY 2026 to 11 JUN 2026

SC-5, 14 MAY 2026 to 11 JUN 2026

LUFKIN FOUR DEPARTURE



DEPARTURE ROUTE DESCRIPTION

TAKEOFF ALL RUNWAYS: Climb on assigned heading for RADAR vectors to KYANN INT, maintain 16000. Expect filed altitude 10 minutes after departure, thence. . .

. . .on IAH R-013 to COLET INT, then on depicted route to LFK VORTAC.

LITTLE ROCK TRANSITION (LFK4.LIT): From over LFK VORTAC on LFK R-026 to CISAR, then on LIT R-210 to LIT VORTAC.

SC-5, 14 MAY 2026 to 11 JUN 2026

SC-5, 14 MAY 2026 to 11 JUN 2026