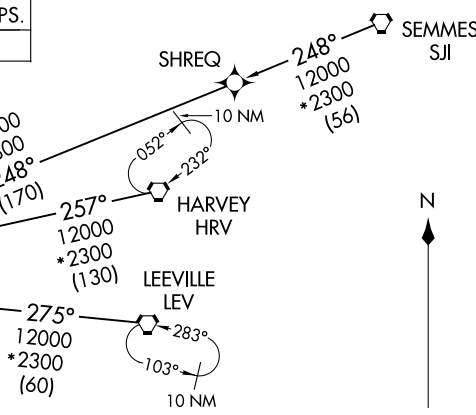
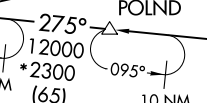
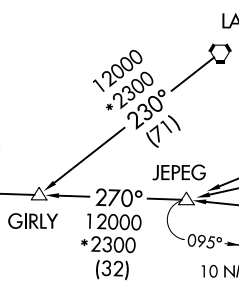
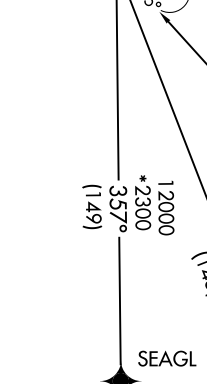
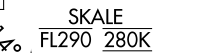
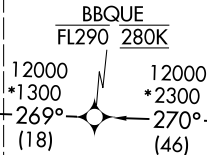
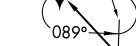


RNAV 1 - DME/DME/IRU or GPS.
RADAR required.

HOUSTON APP CON
119.625 226.675
D-ATIS
124.05

See following page for arrival routes.

LINKK
FL200 280K
17000



NOTE: Jet and turboprop aircraft only.
NOTE: Fly the runway 8R/9 transition; Houston Approach Control may assign a different transition on initial contact.
NOTE: Corresponding RNAV STAR is LINKK. Expect LINKK when IAH is landing west.
NOTE: Jet aircraft descend via mach number until intercepting 280K. Maintain 280K until slowed by the STAR.
NOTE: GPS required for KELPP, PEGLG and SEAGL Transitions.

GIRLY TRANSITION (GIRLY.NNCEE2)
HARVEY TRANSITION (HRV.NNCEE2)
JEPEG TRANSITION (JEPEG.NNCEE2)
KELPP TRANSITION (KELPP.NNCEE2)
LAFAYETTE TRANSITION (LFT.NNCEE2)
LEEVILLE TRANSITION (LEV.NNCEE2)
MULLT TRANSITION (MULLT.NNCEE2)
PEGLG TRANSITION (PEGLG.NNCEE2)
SEAGL TRANSITION (SEAGL.NNCEE2)
SEMMES TRANSITION (SJI.NNCEE2)

(NARRATIVE ON FOLLOWING PAGE)
(CONTINUED ON FOLLOWING PAGE)

NOTE: Chart not to scale.

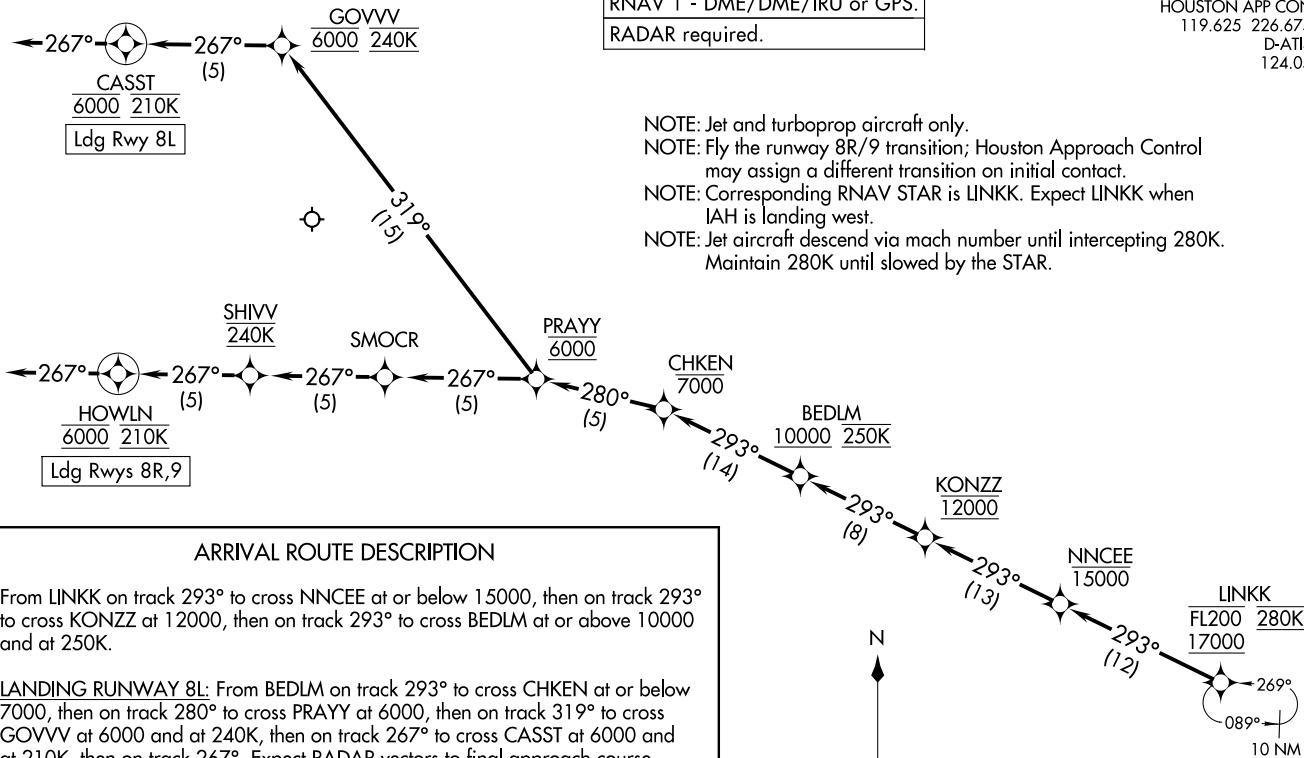
NANCEE TWO ARRIVAL (RNAV) Transition Routes
(LINKK, NANCEE2) 30NOV23
HOUSTON, TEXAS
GEORGE BUSH INTCNL/HOUSTON (IAH)

(LINKK, NANCEE2) 23334
NANCEE TWO ARRIVAL (RNAV) Transition Routes
AL-5461 (FAA)
HOUSTON, TEXAS
GEORGE BUSH INTCNL/HOUSTON (IAH)

RNAV 1 - DME/DME/IRU or GPS.
RADAR required.

HOUSTON APP CON
119.625 226.675
D-ATIS
124.05

- NOTE: Jet and turboprop aircraft only.
- NOTE: Fly the runway 8R/9 transition; Houston Approach Control may assign a different transition on initial contact.
- NOTE: Corresponding RNAV STAR is LINKK. Expect LINKK when IAH is landing west.
- NOTE: Jet aircraft descend via mach number until intercepting 280K. Maintain 280K until slowed by the STAR.



ARRIVAL ROUTE DESCRIPTION

From LINKK on track 293° to cross NNCEE at or below 15000, then on track 293° to cross KONZZ at 12000, then on track 293° to cross BEDLM at or above 10000 and at 250K.

LANDING RUNWAY 8L: From BEDLM on track 293° to cross CHKEN at or below 7000, then on track 280° to cross PRAYY at 6000, then on track 319° to cross GOVVV at 6000 and at 240K, then on track 267° to cross CASST at 6000 and at 210K, then on track 267°. Expect RADAR vectors to final approach course.

LANDING RUNWAYS 8R, 9: From BEDLM on track 293° to cross CHKEN at or below 7000, then on track 280° to cross PRAYY at 6000, then on track 267° to cross SMOCR, then on track 267° to cross SHIVV at 240K, then on track 267° to cross HOWLN at 6000 and at 210K, then on track 267°. Expect RADAR vectors to final approach course.



NOTE: Chart not to scale.

LNKKN>NNCEE2) 23334
30NOV23

ANNCEE TWO ARRIVAL (RNAV) Arrival Routes

HOUSTON, TEXAS
GEORGE BUSH INTCONTL/HOUSTON (IAH)

(LINKK>NNCEE2) 23334
ANNCEE TWO ARRIVAL (RNAV) Arrival Routes

AL-5461 (FAA)
GEORGE BUSH INTCONTL/HOUSTON (IAH)
HOUSTON, TEXAS