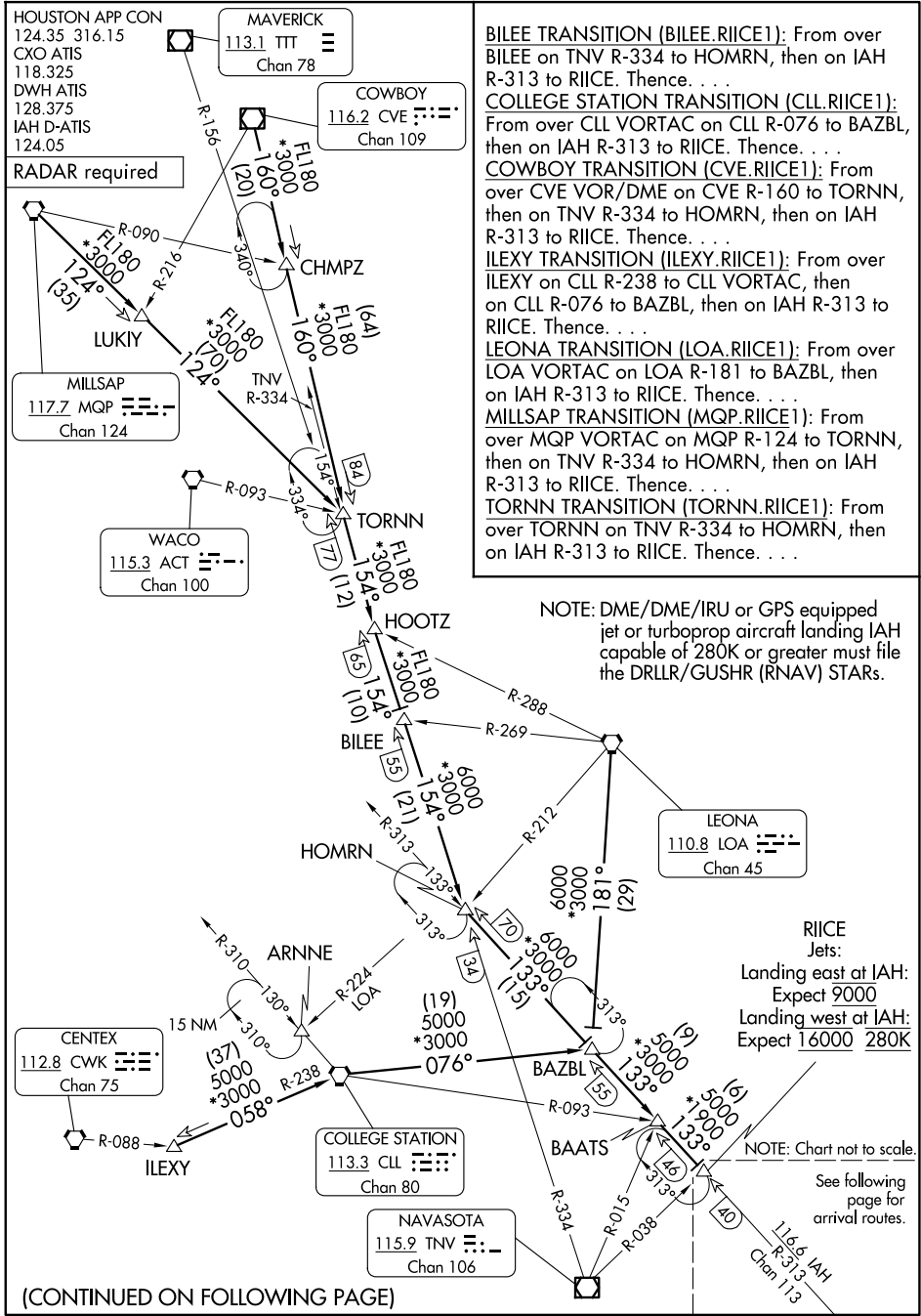


RIICE ONE ARRIVAL

Transition Routes

HOUSTON, TEXAS



BILEE TRANSITION (BILEE.RIICE1): From over BILEE on TNV R-334 to HOMRN, then on IAH R-313 to RIICE. Thence. . . .

COLLEGE STATION TRANSITION (CLL.RIICE1): From over CLL VORTAC on CLL R-076 to BAZBL, then on IAH R-313 to RIICE. Thence. . . .

COWBOY TRANSITION (CVE.RIICE1): From over CVE VOR/DME on CVE R-160 to TORNN, then on TNV R-334 to HOMRN, then on IAH R-313 to RIICE. Thence. . . .

ILEXY TRANSITION (ILEXY.RIICE1): From over ILEXY on CLL R-238 to CLL VORTAC, then on CLL R-076 to BAZBL, then on IAH R-313 to RIICE. Thence. . . .

LEONA TRANSITION (LOA.RIICE1): From over LOA VORTAC on LOA R-181 to BAZBL, then on IAH R-313 to RIICE. Thence. . . .

MILLSAP TRANSITION (MQP.RIICE1): From over MQP VORTAC on MQP R-124 to TORNN, then on TNV R-334 to HOMRN, then on IAH R-313 to RIICE. Thence. . . .

TORNN TRANSITION (TORNN.RIICE1): From over TORNN on TNV R-334 to HOMRN, then on IAH R-313 to RIICE. Thence. . . .

SC-5, 14 MAY 2026 to 11 JUN 2026

SC-5, 14 MAY 2026 to 11 JUN 2026

RIICE ONE ARRIVAL

Transition Routes

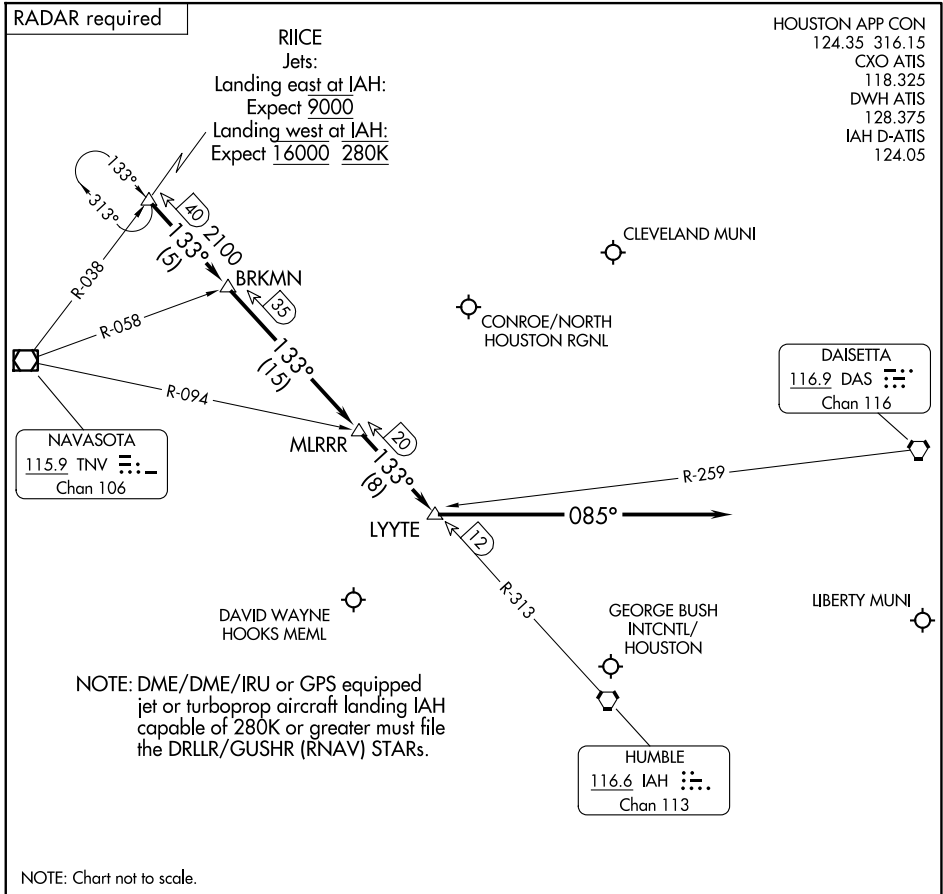
HOUSTON, TEXAS

(CONTINUED ON FOLLOWING PAGE)

RIICE ONE ARRIVAL

Arrival Routes

HOUSTON, TEXAS



SC-5, 14 MAY 2026 to 11 JUN 2026

SC-5, 14 MAY 2026 to 11 JUN 2026

ARRIVAL ROUTE DESCRIPTION

GEORGE BUSH INTCNTL/HOUSTON (IAH):

... From over RIICE on IAH R-313 to BRKMN, to MLRRR, to LYYTE.

LANDING RUNWAYS 26L/R or 27:

... Fly heading 085° for vectors to final approach course.

LANDING ALL OTHER RUNWAYS:

... Expect vectors to final approach course at or prior to LYYTE.

FOR ALL OTHER AIRPORTS:

... From over RIICE on IAH R-313 to BRKMN, thence as depicted to LYYTE. Expect vectors to final approach course at or prior to LYYTE.