


APP CRS 267°	Rwy Ldg TDZE Apt Elev	9000 96 96
------------------------	-----------------------------	---------------------------------------

RNAV (RNP) Y RWY 26R

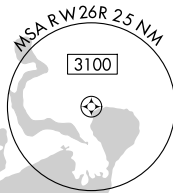
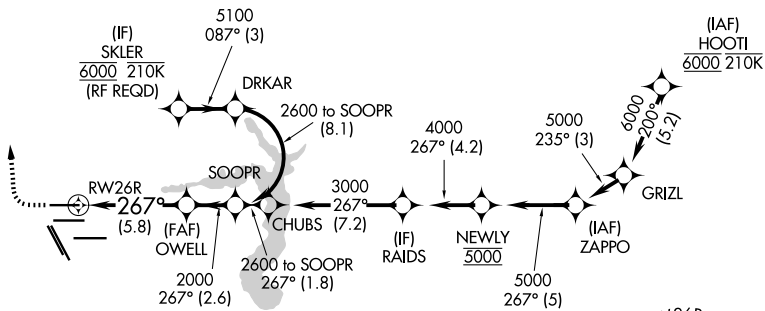
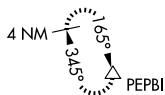
GEORGE BUSH INTCNL/HOUSTON (IAH)

▼ For uncompensated Baro-VNAV systems, procedure NA below -3°C (27°F) or above 54°C (130°F). GPS required. Simultaneous approach authorized. For inop ALS, increase RNP 0.11 all Cats visibility to RVR 5000 and increase RNP 0.15 all Cats visibility to 1½ SM. Use of FD or AP providing RNAV track guidance required during simultaneous operations.

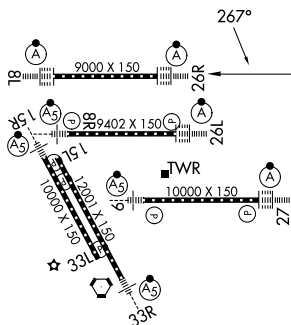
ALSF-2  MISSED APPROACH: Climb to 600 then climbing right turn to 3000 direct PEPBI and hold.

D-ATIS 124.05	HOUSTON APP CON 120.05 379.1 E 124.35 316.15 W	HOUSTON TOWER 120.725 290.2	GND CON 118.575
-------------------------	--	---------------------------------------	---------------------------




RADAR REQUIRED

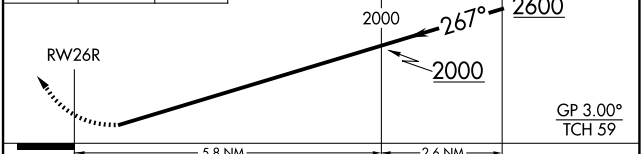


ELEV 96	D	TDZE 96
---------	----------	---------



TDZ/CL Rwy's 8R, 8L, 15R, 26R, 26L, 27 and 33L
HIRL all Rwy's

600	3000	PEPBI	See planview for multiple IF locations.
			



CATEGORY	A	B	C	D
RNP 0.11 DA		429/40	333 (400-¾)	
RNP 0.15 DA		496/45	400 (400-¾)	
RNP 0.30 DA		554/50	458 (500-1½)	

AUTHORIZATION REQUIRED