

APP CRS	Rwy Ldg	10000
267°	TDZE	86
	Apt Elev	96

RNAV (RNP) Y RWY 27

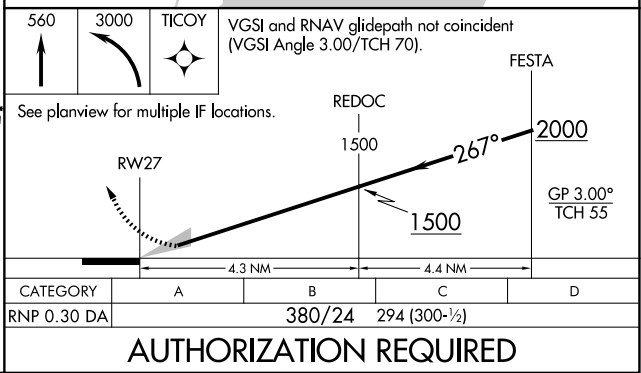
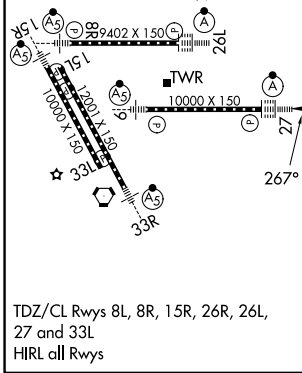
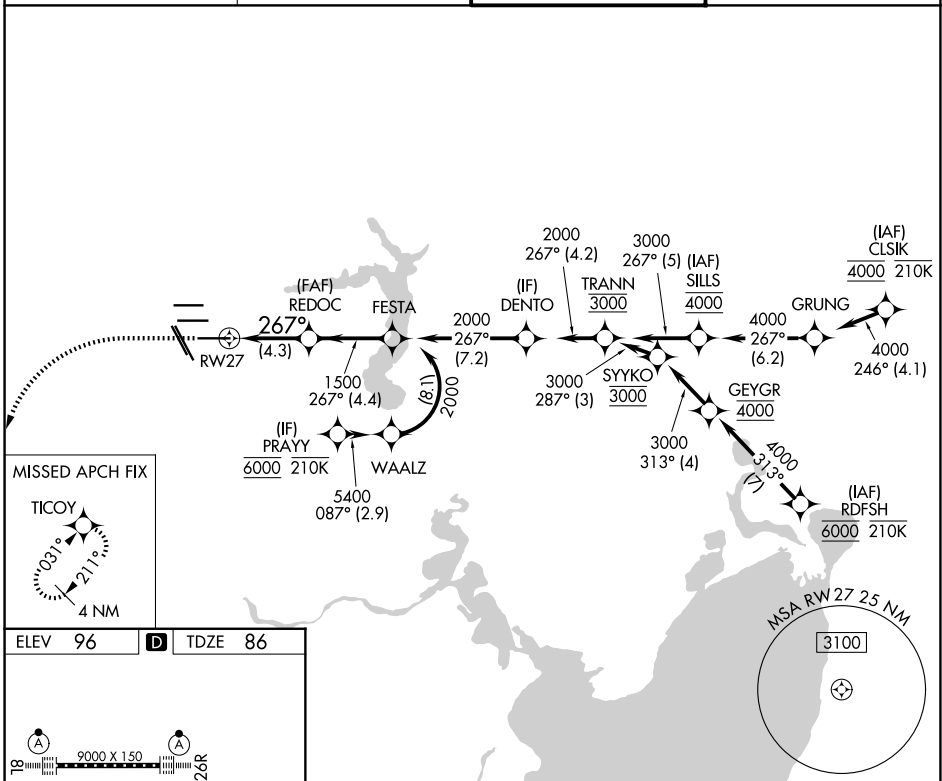
GEORGE BUSH INTCNTL/HOUSTON (IAH)

RNP AR APCH - GPS.

Simultaneous approach authorized. Use of FD or AP required during simultaneous operations. For uncompensated Baro-VNAV systems, procedure NA below -2°C or above 54°C. For inop ALS, increase RNP 0.30 all Cats visibility to RVR 4500.

ALSf-2
 MISSED APPROACH: Climb to 560 then climbing left turn to 3000 direct TICoy and hold.

D-ATIS 124.05	HOUSTON APP CON 120.05 379.1 E 124.35 316.15 W	HOUSTON TOWER 135.15 290.2	GND CON 118.575
-------------------------	--	--------------------------------------	---------------------------



SC-5, 14 MAY 2026 to 11 JUN 2026

SC-5, 14 MAY 2026 to 11 JUN 2026

AUTHORIZATION REQUIRED