

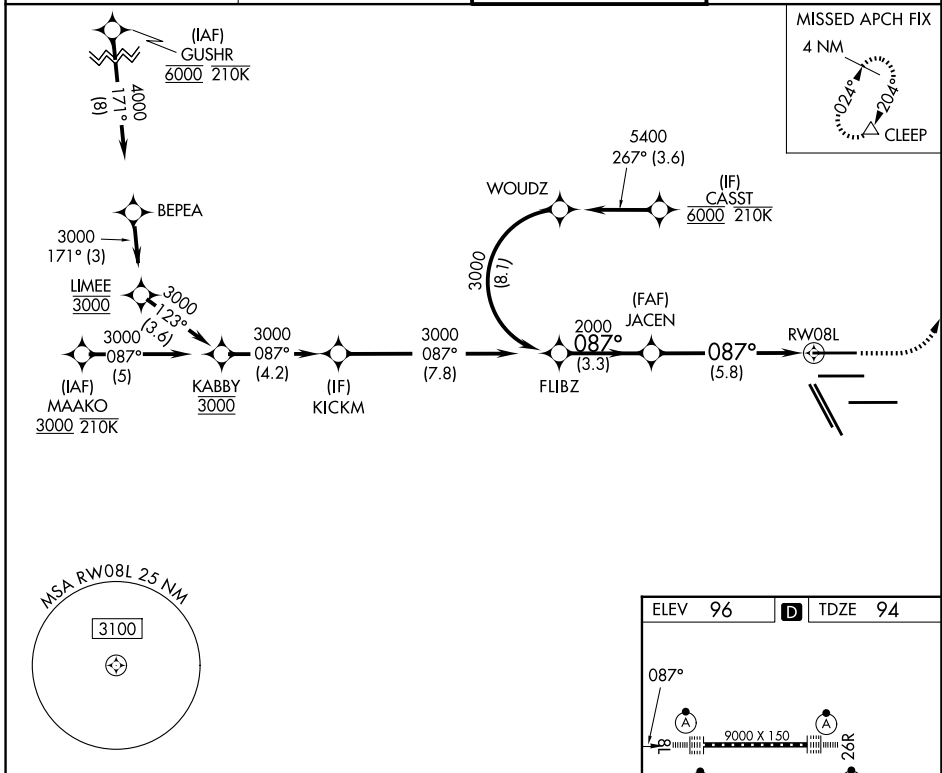
APP CRS	Rwy Ldg	9000
087°	TDZE	94
	Apt Elev	96

RNAV (RNP) Y RWY 8L

GEORGE BUSH INTCNL/HOUSTON (IAH)

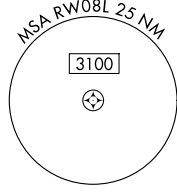
RNP AR APCH-GPS.	ALSF-2	MISSED APPROACH: Climb to 580 then climbing left turn to 4000 direct CLEEP and hold.
<p>Simultaneous approach authorized. For uncompensated Baro-VNAV systems, procedure NA below -2°C or above 54°C. Use of FD or AP providing RNAV track guidance required during simultaneous operations. For inop ALS, increase RNP 0.30 all Cats visibility to RVR 5500.</p>		

D-ATIS 124.05	HOUSTON APP CON 120.05 379.1 E 124.35 316.15 W	HOUSTON TOWER 120.72 290.2	GND CON 121.7
-------------------------	--	--------------------------------------	-------------------------



SC-5, 14 MAY 2026 to 11 JUN 2026

SC-5, 14 MAY 2026 to 11 JUN 2026



See planview for multiple IF locations.

	580	4000	CLEEP
	↑	↶	△

GP 3.00°
TCH 59

CATEGORY	A	B	C	D
RNP 0.30 DA	465/35		371 (400- $\frac{1}{2}$)	

AUTHORIZATION REQUIRED

