

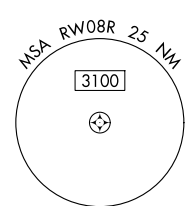
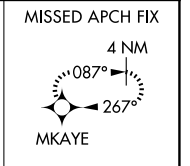
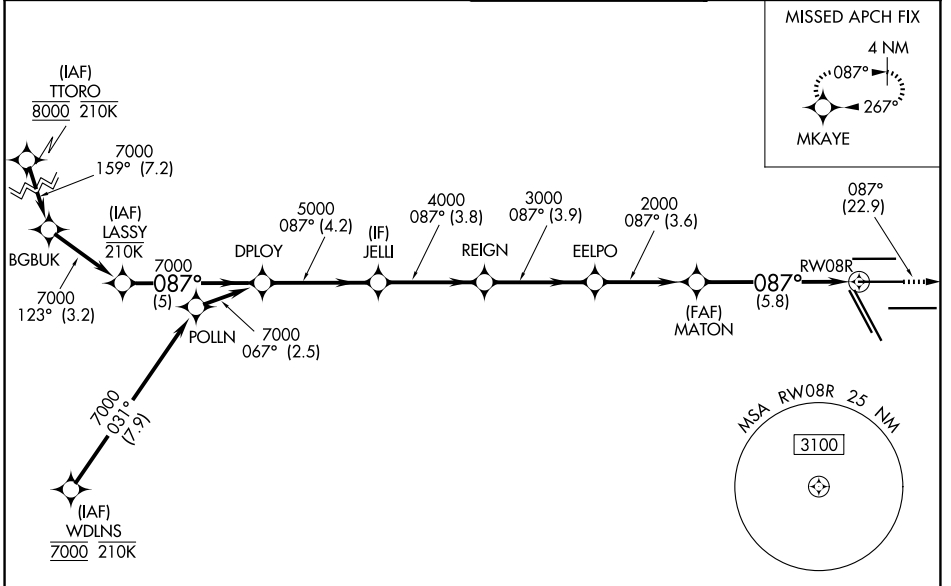
APP CRS	Rwy Ldg	9402
087°	TDZE	95
	Apt Elev	96

RNAV (RNP) Y RWY 8R

GEORGE BUSH INTCNL/HOUSTON (IAH)

RNP AR APCH.	MALSR	MISSED APPROACH: Climb to 3000 on track 087° to MKAYE and hold.
<p>▼ For uncompensated Baro-VNAV systems, procedure NA below -3°C or above 54°C. For inop ALS increase RNP 0.13 all Cats visibility to RVR 4500, RNP 0.14 all Cats visibility to RVR 5600, RNP 0.30 all Cats visibility to 1¼ SM. Simultaneous approach authorized.</p>		

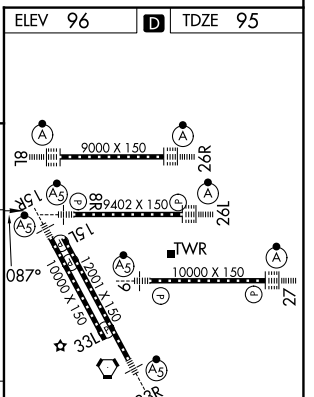
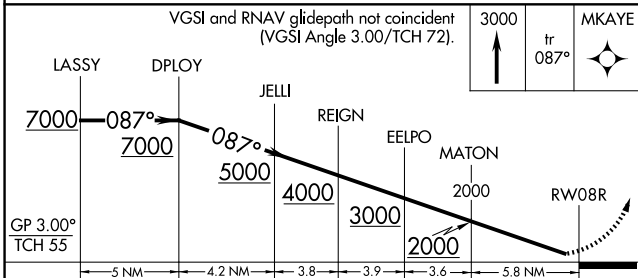
D-ATIS 124.05	HOUSTON APP CON 120.05 379.1 E 124.35 316.15 W	HOUSTON TOWER 125.35 290.2	GND CON 118.575
-------------------------	--	--------------------------------------	---------------------------



SC-5, 14 MAY 2026 to 11 JUN 2026

SC-5, 14 MAY 2026 to 11 JUN 2026

ELEV 96	D TDZE 95
---------	------------------



CATEGORY	A	B	C	D
RNP 0.13 DA		383/40	288 (300-¾)	
RNP 0.14 DA		441/40	346 (400-¾)	
RNP 0.30 DA		492/45	397 (400-¾)	

TDZ/CL Rwy 8R, 8L, 15R, 26R, 26L, 27 and 33L
 HIRL all Rwy's

AUTHORIZATION REQUIRED