

WAAS CH 49226 W26D	APP CRS 267°	Rwy Ldg 9402 TDZE 95 Apt Elev 96
--	------------------------	---

RNAV (GPS) Z RWY 26L

GEORGE BUSH INTCNL/HOUSTON (IAH)

▼ For uncompensated Baro-VNAV systems, LNAV/VNAV NA below -3°C (27°F) or above 54°C (130°F). For inop ALSF, increase LPV Cat E visibility to RVR 4000, LNAV/VNAV Cat E visibility to 1½, and LNAV Cat E visibility to 1¾. DME/DME RNP-0.3 NA. Simultaneous approach authorized with Rwy 26R and Rwy 27. LNAV procedure NA during simultaneous operations. Use of FD or AP providing RNAV track guidance required during simultaneous operations.

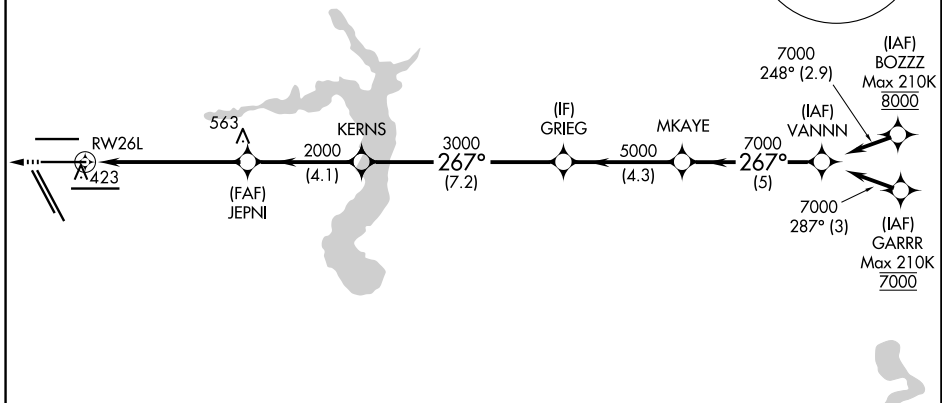
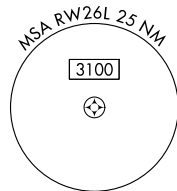
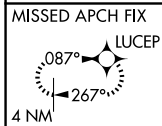
ALSF-2
MISSED APPROACH:
Climb to 3000 direct
LUCEP and hold.

D-ATIS
124.05

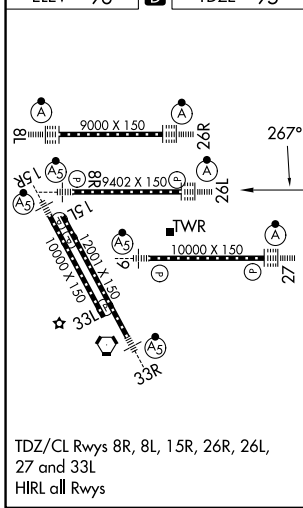
HOUSTON APP CON
120.05 379.1 E
124.35 316.15 W

HOUSTON TOWER
125.35 290.2

GND CON
118.575

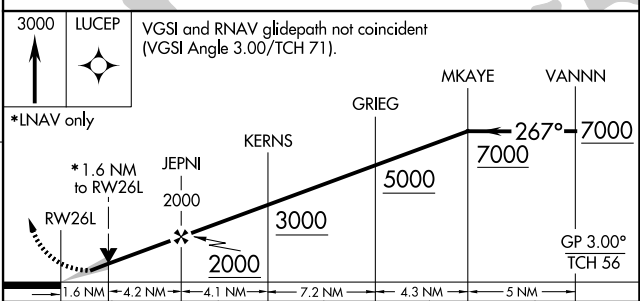


ELEV 96 **D** TDZE 95



TDZ/CL Rws 8R, 8L, 15R, 26R, 26L, 27 and 33L
HIRL all Rws

RADAR REQUIRED



3000 LUCEP	VGSi and RNAV glidepath not coincident (VGSi Angle 3.00/TCH 71).					
*LNAV only	MAYE VANNN					
	GRIEG KERNS					
	267° 7000					
	GP 3.00° TCH 56					
	1.6 NM	4.2 NM	4.1 NM	7.2 NM	4.3 NM	5 NM
CATEGORY	A	B	C	D	E	
LPV DA		295/18	200 (200-½)			
LNAV/VNAV DA		586/60	491 (500-1¼)			
LNAV MDA	680/24	585 (600-½)	680-1¼	585 (600-1¼)		

SC-5, 14 MAY 2026 to 11 JUN 2026

SC-5, 14 MAY 2026 to 11 JUN 2026