

WAAS CH <b>77826</b> <b>W08A</b>	APP CRS <b>087°</b>	Rwy Ldg TDZE Apt Elev	<b>9000</b> <b>95</b> <b>96</b>
--	------------------------	-----------------------------	---------------------------------------

# RNAV (GPS) Z RWY 8L

GEORGE BUSH INTCNL/HOUSTON (IAH)

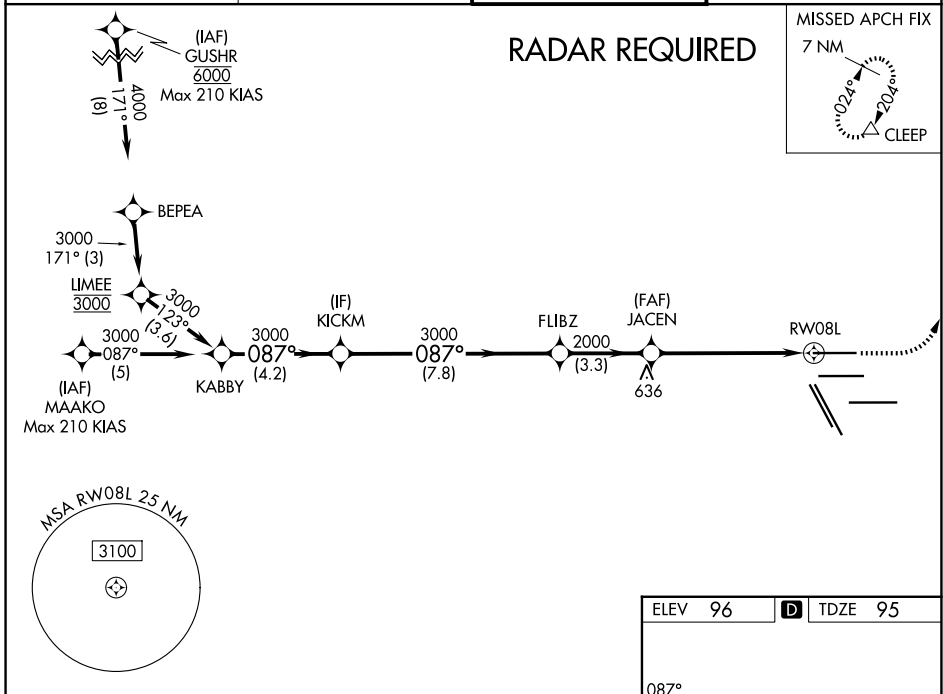
**▼** For uncompensated Baro-VNAV systems, LNAV/VNAV NA below -3°C (27°F) or above 54°C (130°F). For inop ALSF, increase LPV Cat E visibility to RVR 4000, LNAV/VNAV Cat E visibility to 1¼, and LNAV Cat C/D/E visibility to 1¾. Simultaneous approach authorized with Rwy 8R and Rwy 9. DME/DME RNP-0.3 NA. Use of FD or AP providing RNAV track guidance required during simultaneous operations. LNAV procedure NA during simultaneous operations.

ALSF-2



MISSED APPROACH: Climb to 580 then climbing left turn to 4000 direct CLEEP and hold.

D-ATIS <b>124.05</b>	HOUSTON APP CON <b>120.05 379.1 E</b> <b>124.35 316.15 W</b>	HOUSTON TOWER <b>120.72 290.2</b>	GND CON <b>118.575</b>
-------------------------	--	--------------------------------------	---------------------------



SC-5, 14 MAY 2026 to 11 JUN 2026

SC-5, 14 MAY 2026 to 11 JUN 2026

