


WAAS CH 53626 W08B	APP CRS 087°	Rwy Ldg TDZE 96 Apt Elev 96	9402
--	------------------------	---	-------------

RNAV (GPS) Z RWY 8R

GEORGE BUSH INTCNL/HOUSTON (IAH)

▼ For uncompensated Baro-VNAV systems, LNAV/VNAV NA below -3°C (27°F) or above 54°C (130°F). For inop MALS R, increase LPV Cat E visibility to RVR 4000, LNAV/VNAV all Cats visibility to RVR 6000, and LNAV Cat C/D/E visibility to 1 $\frac{1}{2}$ %. Simultaneous approach authorized with Rwy 8L and Rwy 9. DME/DME RNP-0.3 NA. Use of FD or AP providing RNAV track guidance required during simultaneous operations. LNAV procedure NA during simultaneous operations.

MALS R

 MISSED APPROACH: Climb to 3000 direct MKAYE and hold.

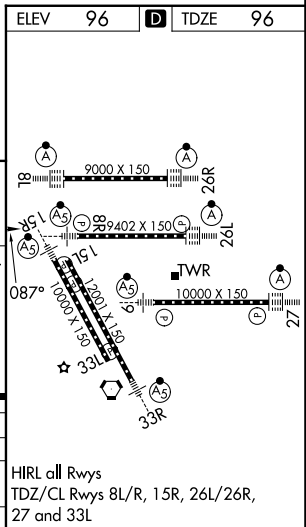
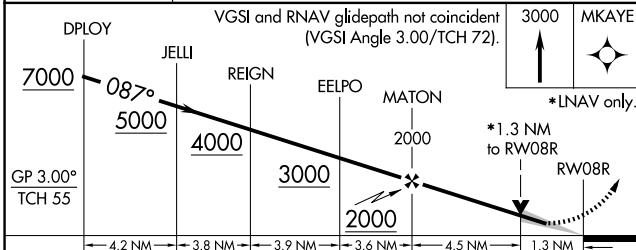
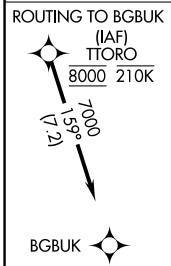
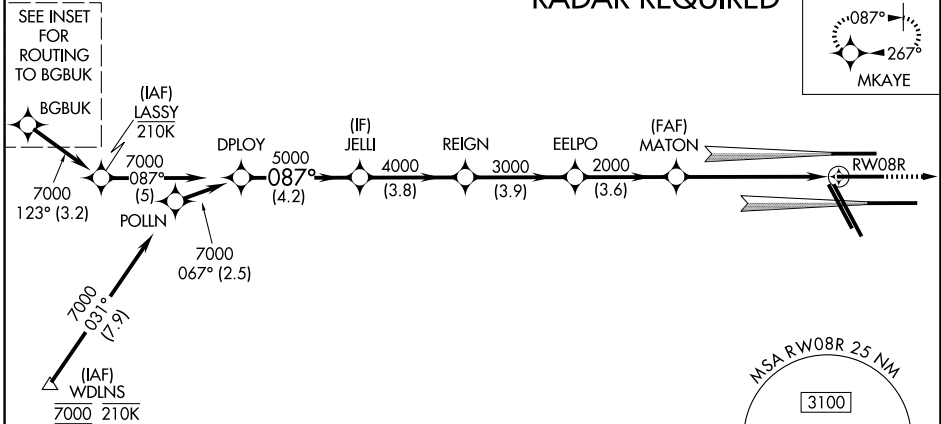
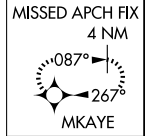
D-ATIS
124.05

HOUSTON APP CON
120.05 379.1 E
124.35 316.15 W

HOUSTON TOWER
125.35 290.2

GND CON
118.575

RADAR REQUIRED



CATEGORY	A	B	C	D	E
LPV DA	296/18		200 (200- $\frac{1}{2}$)		
LNAV/VNAV DA	421/32		325 (400- $\frac{5}{8}$)		
LNAV MDA	580/24	484 (500- $\frac{1}{2}$)	580/50	484 (500-1)	

SC-5, 14 MAY 2026 to 11 JUN 2026

SC-5, 14 MAY 2026 to 11 JUN 2026