

TEJAS FIVE ARRIVAL (RNAV) Transition Routes

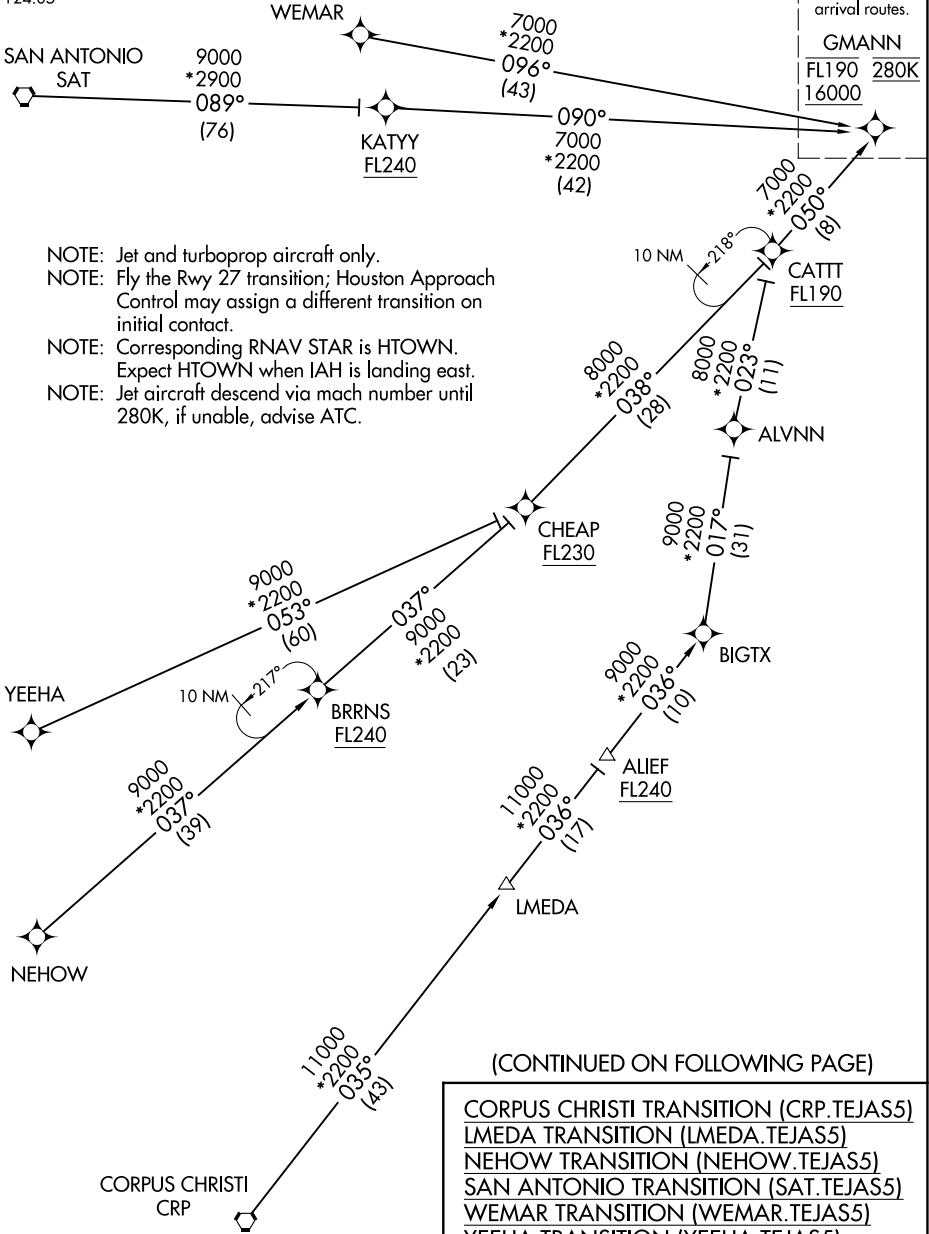
HOUSTON, TEXAS

HOUSTON APP CON
119.175 291.675
D-ATIS
124.05

RNAV 1 - DME/DME/IRU or GPS.
RADAR required.

See following page for arrival routes.

GMANN
FL190 280K
16000



- NOTE: Jet and turboprop aircraft only.
- NOTE: Fly the Rwy 27 transition; Houston Approach Control may assign a different transition on initial contact.
- NOTE: Corresponding RNAV STAR is HTOWN. Expect HTOWN when IAH is landing east.
- NOTE: Jet aircraft descend via mach number until 280K, if unable, advise ATC.

(CONTINUED ON FOLLOWING PAGE)

CORPUS CHRISTI TRANSITION (CRP.TEJAS5)
 LMEDA TRANSITION (LMEDA.TEJAS5)
 NEHOW TRANSITION (NEHOW.TEJAS5)
 SAN ANTONIO TRANSITION (SAT.TEJAS5)
 WEMAR TRANSITION (WEMAR.TEJAS5)
 YEEHA TRANSITION (YEEHA.TEJAS5)

NOTE: Chart not to scale.

SC-5, 14 MAY 2026 to 11 JUN 2026

SC-5, 14 MAY 2026 to 11 JUN 2026

ARRIVAL ROUTE DESCRIPTION

From GMANN on track 058° to cross CITTE at or below 16000, then on track 059° to cross TEJAS between 12000 and 14000 and at 250K.

LANDING RUNWAY 26L: From TEJAS on track 059° to cross RIDLR at or below 10000, then on track 059° to cross BEEEP at or below 8000, then on track 059° to cross HOWLN at 6000 and at 240K, then on track 087° to SMOCR, then on track 087° to cross PRAYY at 6000 and at 210K, then on track 087°. Expect RADAR vectors to final approach course.

LANDING RUNWAY 26R: From TEJAS on track 059° to cross RIDLR at or below 10000, then on track 059° to cross BEEEP at or below 8000, then on track 059° to cross HOWLN at 6000 and at 240K, then on track 034° to ZOEER, then on track 087° to cross SKLER at 6000 and at 210K, then on track 087°. Expect RADAR vectors to final approach course.

LANDING RUNWAY 27: From TEJAS on track 059° to cross RIDLR at or below 10000, then on track 059° to cross BEEEP at or below 8000, then on track 059° to cross HOWLN at 6000 and at 240K, then on track 087° to SHIVV, then on track 087° to SMOCR, then on track 087° to cross PRAYY at 6000 and at 210K, then on track 087°. Expect RADAR vectors to final approach course.

RNAV 1 - DME/DME/IRU or GPS.

RADAR required.

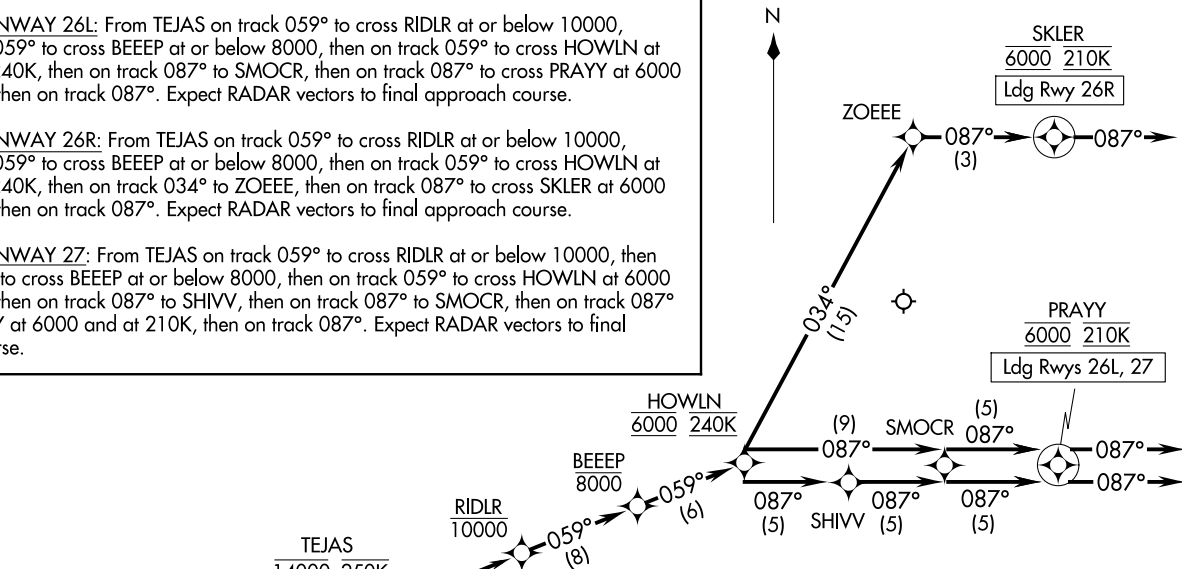
HOUSTON APP CON
119.175 291.675
D-ATIS
124.05

TEJAS FIVE ARRIVAL (RNAV) Arrival Routes
(GMANN, TEJAS5) 05OCT23

HOUSTON, TEXAS
GEORGE BUSH INTL/HOUSTON (IAH)

(GMANN, TEJAS5) 23278
TEJAS FIVE ARRIVAL (RNAV) Arrival Routes

AL-5461 (FAA)
GEORGE BUSH INTL/HOUSTON (IAH)
HOUSTON, TEXAS



NOTE: Chart not to scale.

- NOTE: Jet and turboprop aircraft only.
- NOTE: Fly the Rwy 27 transition; Houston Approach Control may assign a different transition on initial contact.
- NOTE: Corresponding RNAV STAR is HTOWN. Expect HTOWN when IAH is landing east.
- NOTE: Jet aircraft descend via mach number until 280K, if unable, advise ATC.