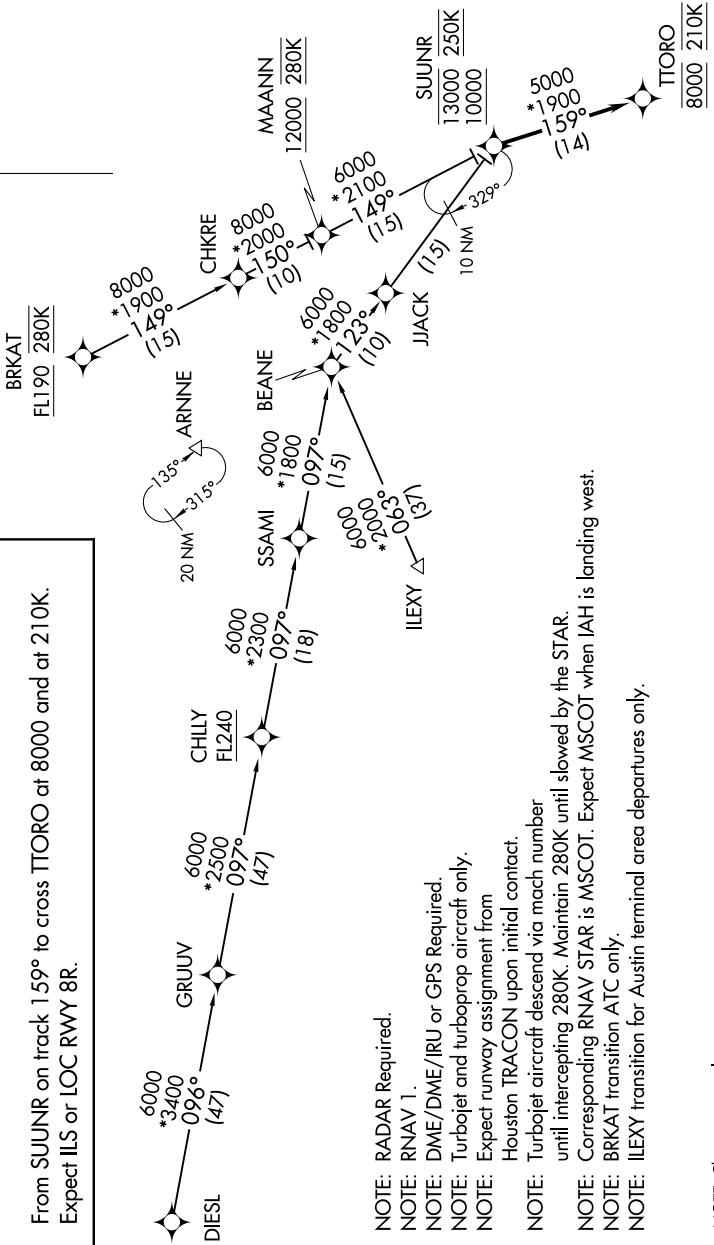
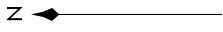




HOUSTON APP CON  
124.35 316.15  
D-ATIS  
124.05



ARRIVAL ROUTE DESCRIPTION

- BRKAT TRANSITION (BRKAT.TTORO3):
- CHLly TRANSITION (CHLly.TTORO3):
- DIESL TRANSITION (DIESL.TTORO3):
- IILEXY TRANSITION (IILEXY.TTORO3):

From SUUNR on track 159° to cross TTORO at 8000 and at 210K.  
Expect ILS or LOC RWY 8R.

- NOTE: RADAR Required.
- NOTE: RNAV 1.
- NOTE: DME/DME/IRU or GPS Required.
- NOTE: Turbojet and turboprop aircraft only.
- NOTE: Expect runway assignment from Houston TRACON upon initial contact.
- NOTE: Turbojet aircraft descend via mach number until intercepting 280K. Maintain 280K until slowed by the STAR.
- NOTE: Corresponding RNAV STAR is MSCOT. Expect MSCOT when IAH is landing west.
- NOTE: BRKAT transition ATC only.
- NOTE: IILEXY transition for Austin terminal area departures only.

NOTE: Chart not to scale.