

(ZEEKK.ZEEKK3) 25163

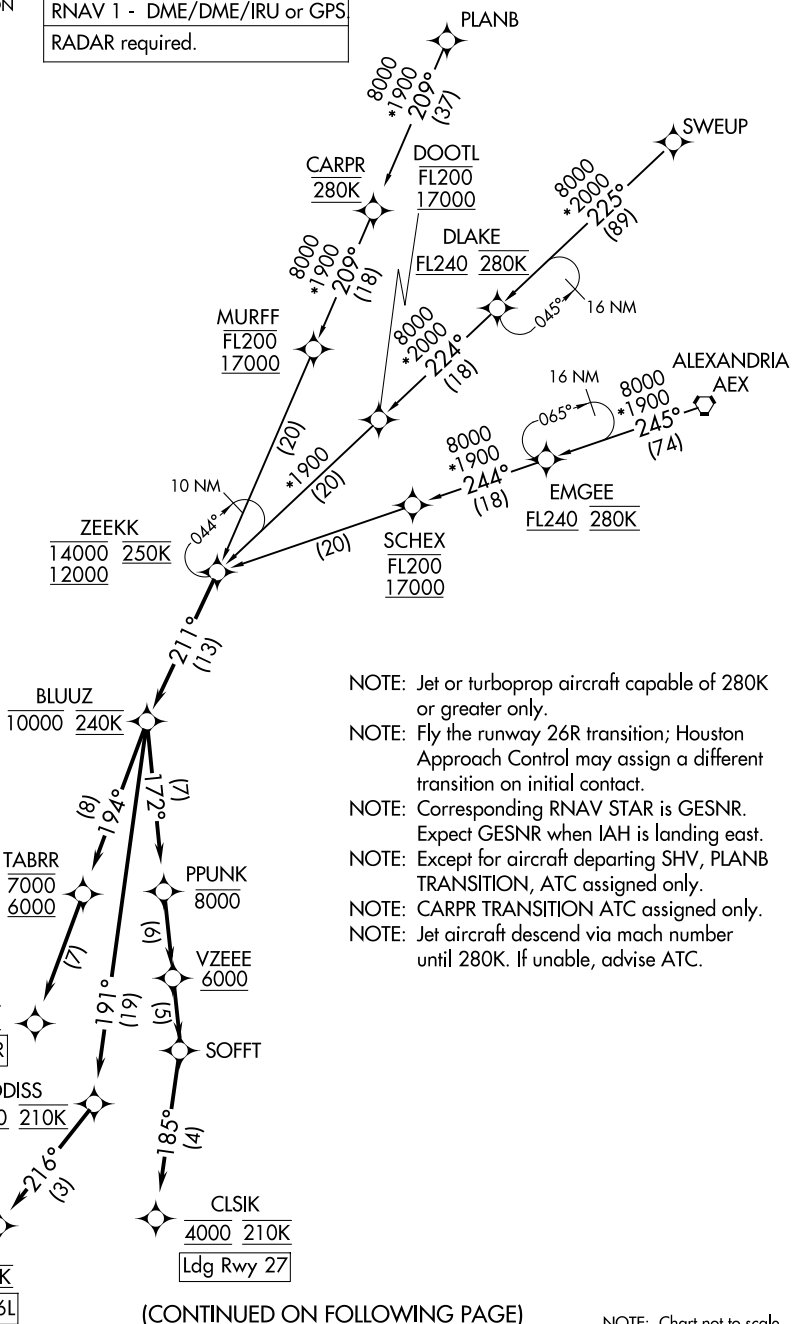
GEORGE BUSH INTCNL/HOUSTON (IAH)

ZEEKK THREE ARRIVAL(RNAV) AL-5461 (FAA)

HOUSTON, TEXAS

HOUSTON APP CON  
120.05 379.1  
D-ATIS  
124.05

RNAV 1 - DME/DME/IRU or GPS  
RADAR required.



- NOTE: Jet or turboprop aircraft capable of 280K or greater only.
- NOTE: Fly the runway 26R transition; Houston Approach Control may assign a different transition on initial contact.
- NOTE: Corresponding RNAV STAR is GESNR. Expect GESNR when IAH is landing east.
- NOTE: Except for aircraft departing SHV, PLANB TRANSITION, ATC assigned only.
- NOTE: CARPR TRANSITION ATC assigned only.
- NOTE: Jet aircraft descend via mach number until 280K. If unable, advise ATC.

(CONTINUED ON FOLLOWING PAGE)

NOTE: Chart not to scale.

SC-5, 14 MAY 2026 to 11 JUN 2026

SC-5, 14 MAY 2026 to 11 JUN 2026

ZEEKK THREE ARRIVAL(RNAV)

HOUSTON, TEXAS

(ZEEKK.ZEEKK3) 12JUN25

GEORGE BUSH INTCNL/HOUSTON (IAH)

ARRIVAL ROUTE DESCRIPTION

ALEXANDRIA TRANSITION (AEX.ZEEKK3)

CARPR TRANSITION (CARPR.ZEEKK3)

PLANB TRANSITION (PLANB.ZEEKK3)

SWEUP TRANSITION (SWEUP.ZEEKK3)

From ZEEKK on track 211° to cross BLUUZ at or below 10000 and at 240K.

LANDING RUNWAY 26L: From BLUUZ on track 191° to cross ODISS at or above 8000 and at 210K, then on track 216° to cross BOZZZ at 8000 and at 210K. Expect ILS or LOC RWY 26L approach.

LANDING RUNWAY 26R: From BLUUZ on track 194° to cross TABRR between 6000 and 7000, then on track 194° to cross HOOTI at 6000 and at 210K. Expect ILS or LOC RWY 26R approach.

LANDING RUNWAY 27: From BLUUZ on track 172° to cross PPUNK at or below 8000, then on track 172° to cross VZEEE at or above 6000, then on track 172° to SOFFT, then on track 185° to cross CLSIK at 4000 and at 210K. Expect ILS or LOC RWY 27 approach.

SC-5, 14 MAY 2026 to 11 JUN 2026

SC-5, 14 MAY 2026 to 11 JUN 2026