

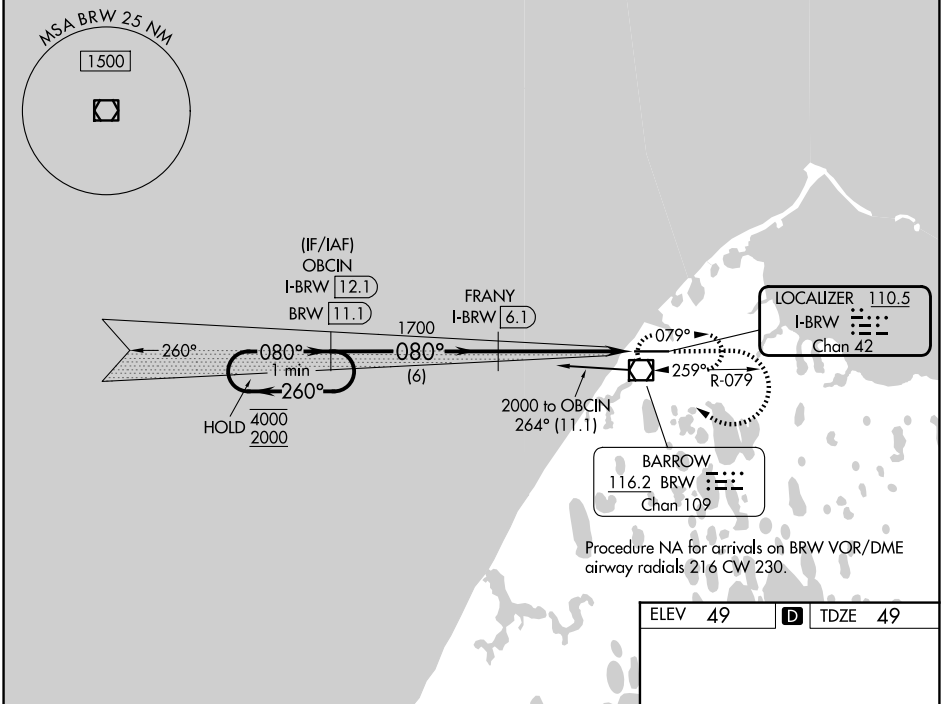
LOC/DME I-BRW 110.5 Chan 42	APP CRS 080°	Rwy Ldg 5900 TDZE 49 Apt Elev 49
---	------------------------	---

ILS or LOC RWY 8

WILEY POST-WILL ROGERS MEML (BRW)(PABR)

DME required.	MALSR	MISSED APPROACH: Climb to 1000 then descending right turn to 2000 direct BRW VOR/DME and hold, continue climb-in-hold to 2000.
<p>Autopilot coupled approach NA below 290. Circling NA for Cat A north of Rwy 8-26. For inop ALS, increase S-LOC 8 Cat C/D visibility to RVR 6000. *RVR 1800 authorized with use of FD or AP or HUD to DA.</p>		

AFIS 132.15	ANCHORAGE CENTER 135.3 239.25	BARROW RADIO 123.6 (CTAF) 0
-----------------------	---	---------------------------------------



ELEV 49	D	TDZE 49		
VGSI and ILS glidepath not coincident (VGSI Angle 3.00/TCH 51). One Minute Holding Pattern OBCIN I-BRW 12.1 FRANY I-BRW 6.1 4000 ← 260° 2000 080° → GS 3.00° TCH 57 1700 1000 2000 BRW I-BRW 2.2 I-BRW 1.1 080° 7100 X 1500 20 84 REIL Rwy 26 0 HIRL Rwy 8-26 0				
CATEGORY	A	B	C	D
S-ILS 8*	249/24		200 (200-½)	
S-LOC 8	460/24	411 (500-½)	460/40	411 (500-¾)
CIRCLING	460-1 411 (500-1)	500-1 451 (500-1)	500-1½ 451 (500-1½)	680-2 631 (700-2)

ILS or LOC RWY 8

AK, 14 MAY 2026 to 09 JUL 2026

AK, 14 MAY 2026 to 09 JUL 2026