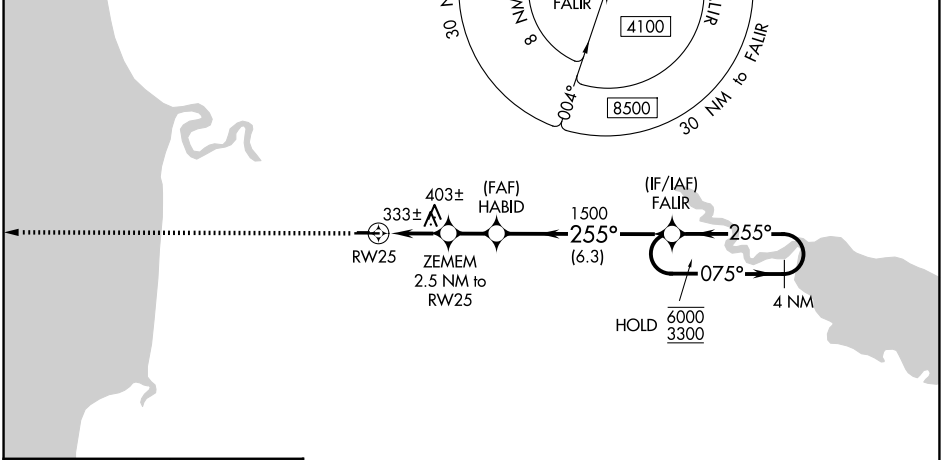
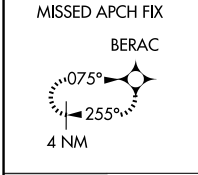


WAAS CH <b>86236</b> <b>W25A</b>	APP CRS <b>255°</b>	Rwy Ldg TDZE <b>113</b> Apt Elev <b>113</b>
----------------------------------------	------------------------	---------------------------------------------------

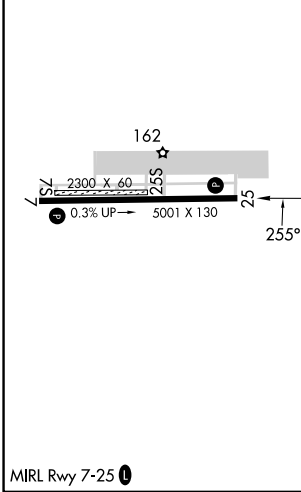
# RNAV (GPS) RWY 25

SOLDOTNA (SXQ)(PASX)

RNP APCH - GPS.		MISSED APPROACH: Climb to 2600 direct BERAC and hold.	
<p>▼ Circling NA to Rwy 7S and 25S. Circling Rwy 7 NA at night.                  ▲ Rwy 25 helicopter visibility reduction below 3/4 SM NA.</p>			
AWOS-3P <b>135.45</b>	ANCHORAGE CENTER <b>125.7 379.1</b>	KENAI RADIO <b>122.35</b>	CTAF <b>122.50</b>



ELEV 113	TDZE 113
----------	----------



<p>2600 BERAC</p> <p>HABID</p> <p>FALIR</p> <p>4 NM Holding Pattern</p> <p>075° → 6000 ← 255° 3300</p> <p>1.4 NM to RW25</p> <p>ZEMEM 2.5 NM to RW25</p> <p>1500</p> <p>900</p> <p>1.4 NM   1.1 NM   1.7 NM   6.3 NM</p>				
CATEGORY	A	B	C	D
LP MDA	600-1	487 (500-1)	600-1 3/8	487 (500-1 3/8)
LNAV MDA	660-1	547 (600-1)	660-1 5/8	547 (600-1 5/8)
CIRCLING	740-1 627 (700-1)	820-1 707 (800-1)	820-2 707 (800-2)	980-2 3/4 867 (900-2 3/4)

AK, 14 MAY 2026 to 09 JUL 2026

AK, 14 MAY 2026 to 09 JUL 2026