

WAAS CH <b>45942</b> <b>W07A</b>	APP CRS <b>075°</b>	Rwy Ldg TDZE Apt Elev	<b>5001</b> <b>102</b> <b>113</b>
--	------------------------	-----------------------------	---

# RNAV (GPS) RWY 7

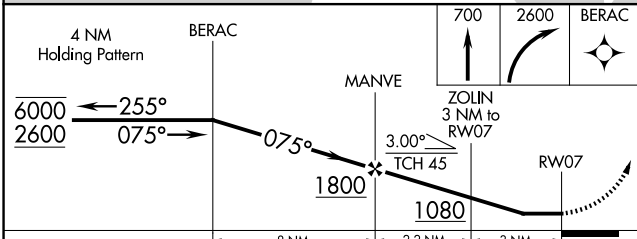
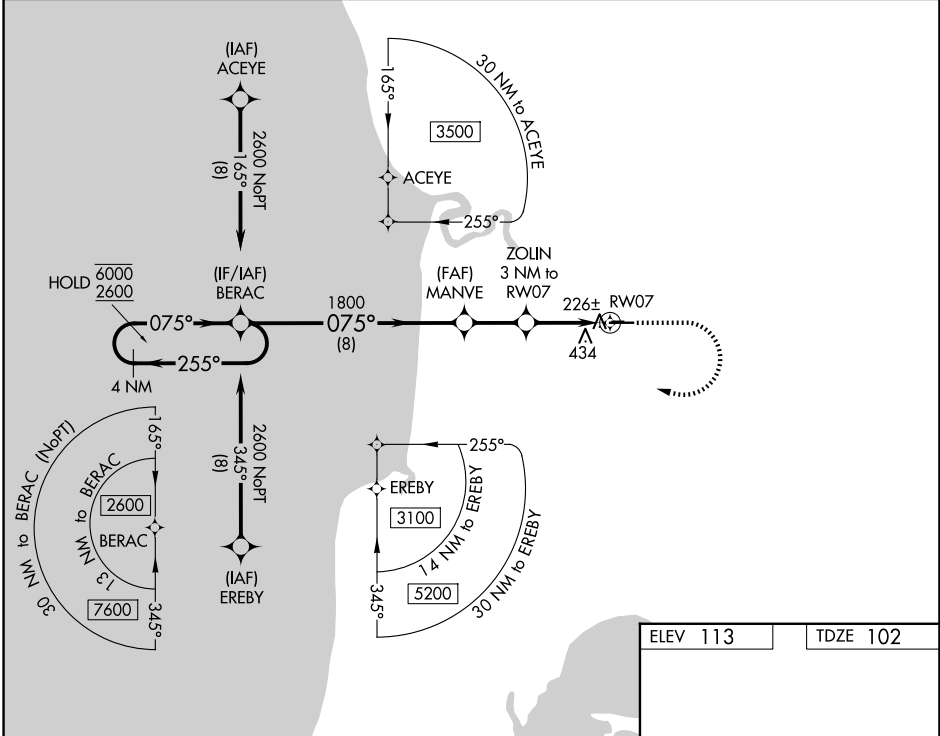
SOLDOTNA (SXQ)(PASX)

RNP APCH - GPS.

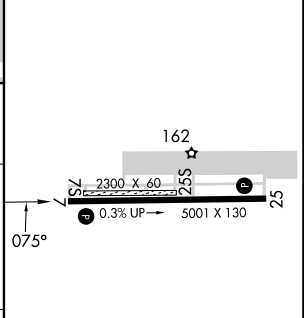
**⚠** Circling NA to Rwy's 7S and 25S. Rwy 7 helicopter visibility reduction below 1 SM NA. Rwy 7 Straight-In and Circling minimums NA at night.

**MISSED APPROACH:** Climb to 700 then climbing right turn to 2600 direct BERAC and hold.

AWOS-3P <b>135.45</b>	ANCHORAGE CENTER <b>125.7 379.1</b>	KENAI RADIO <b>122.35</b>	CTAF <b>122.5 0</b>
--------------------------	--	------------------------------	------------------------



ELEV 113	TDZE 102
----------	----------



CATEGORY	A	B	C	D
LP MDA	480-1 378 (400-1)			
LNAV MDA	640-1	538 (600-1)	640-1½	538 (600-1½)
CIRCLING	740-1 627 (700-1)	820-1 707 (800-1)	820-2 707 (800-2)	980-2¾ 867 (900-2¾)

MRL Rwy 7-25 **0**

AK, 14 MAY 2026 to 09 JUL 2026

AK, 14 MAY 2026 to 09 JUL 2026