

APP CRS <b>103°</b>	Rwy Ldg TDZE Apt Elev	<b>4300</b> <b>706</b> <b>706</b>
------------------------	-----------------------------	---

# RNAV (GPS) RWY 11

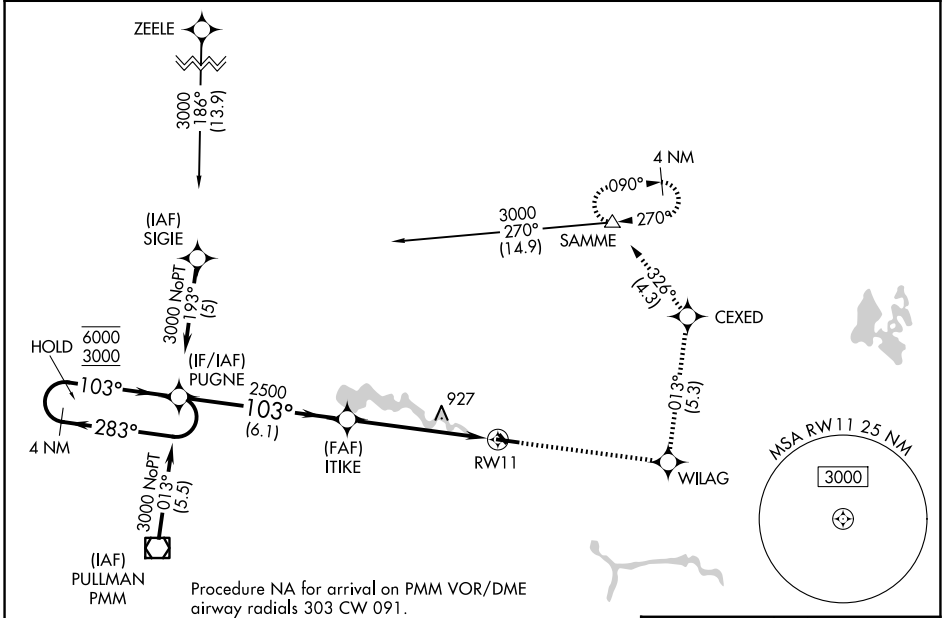
PADGHAM FLD (35D)

RNP APCH - GPS.

**NA** Circling NA to Rwy 15 and 33. Rwy 11 helicopter visibility reduction below ¼ SM NA. Use Holland altimeter setting, when not received use Grand Rapids altimeter setting and increase all MDAs 40 feet and LNAV Cat C visibility ¼ SM.

MISSED APPROACH: Climb to 3000 direct WILAG and on track 013° to CEXED and track 326° to SAMME and hold, continue climb-in-hold to 3000.

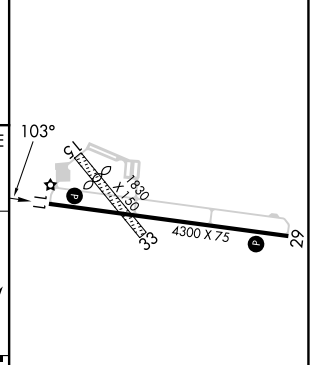
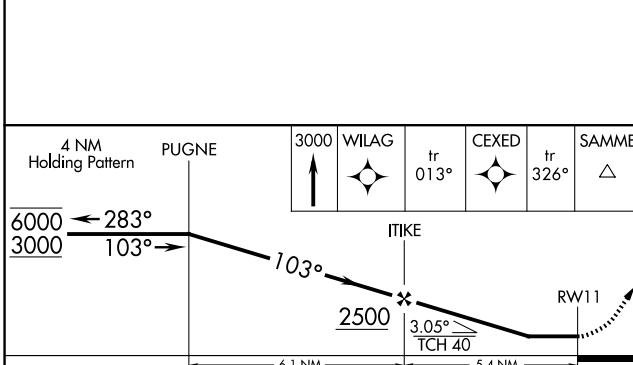
BIV ASOS <b>119.025</b>	GREAT LAKES APP CON * <b>128.4 257.6</b>	UNICOM <b>122.8 (CTAF) 0</b>
----------------------------	---	---------------------------------



EC-1, 14 MAY 2026 to 11 JUN 2026

EC-1, 14 MAY 2026 to 11 JUN 2026

ELEV 706	TDZE 706
----------	----------



CATEGORY	A	B	C	D
LNAV MDA	1220-1	514 (600-1)	1220-1 1/8 514 (600-1 1/8)	NA
CIRCLING	1280-1 574 (600-1)	1320-1 614 (700-1)	1460-2 1/4 754 (800-2 1/4)	NA

REIL Rwy 11 and 29 **0**  
MIRL Rwy 11-29 **0**