


WAAS CH <b>82104</b> <b>W02A</b>	APP CRS <b>019°</b>	Rwy Ldg <b>6506</b> TDZE <b>300</b> Apt Elev <b>303</b>
--	------------------------	---

# RNAV (GPS) RWY 2

HEART OF GEORGIA RGNL (E2M)

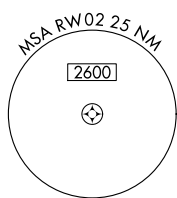
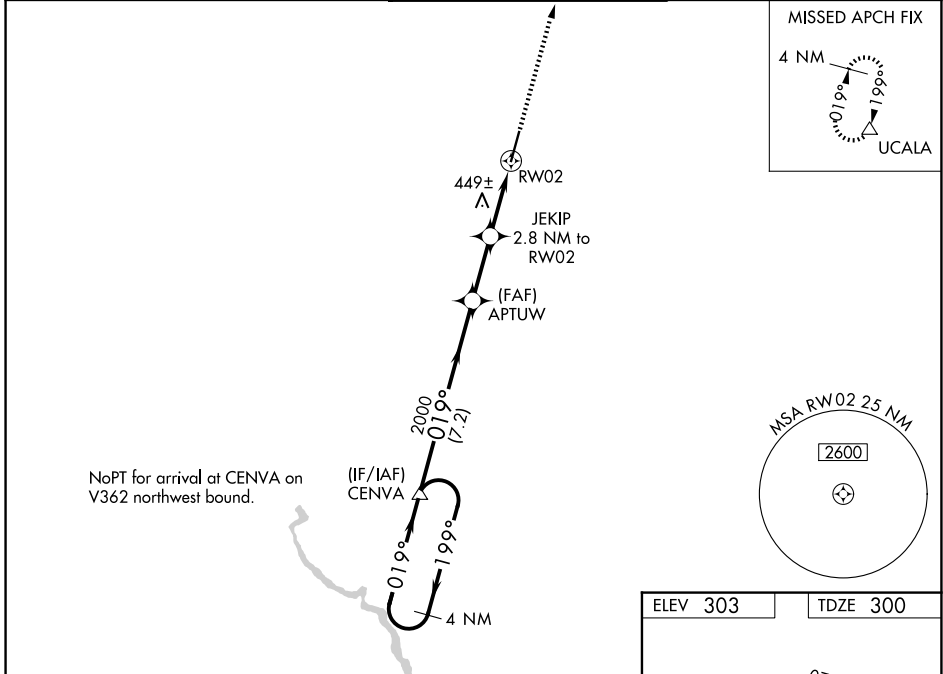
**⚠** Baro-VNAV NA when using Dublin altimeter setting. For uncompensated Baro-VNAV systems, LNAV/VNAV NA below -1.5°C (5°F) or above 54°C (130°F). When local altimeter setting not received, use Dublin altimeter setting and increase all DA 52 feet and all MDA 60 feet; increase LNAV/VNAV all Cats, LNAV Cat C/D and Circling Cat C visibility ¼ miles. DME/DME RNP-0.3 NA. VDP NA with Dublin altimeter setting.

MALS

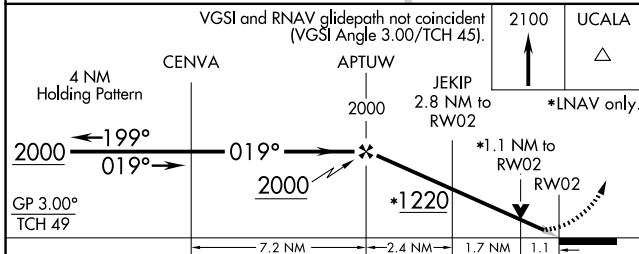


MISSED APPROACH:  
Climb to 2100 direct UCALA and hold.

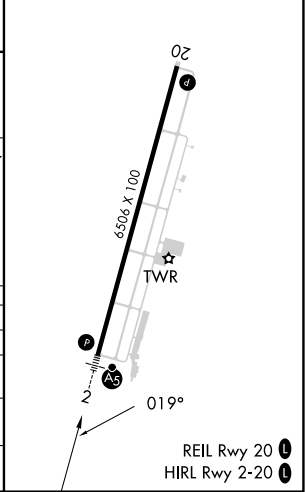
ATIS <b>119.425</b>	JACKSONVILLE CENTER <b>127.575 269.025</b>	HEART OF GEORGIA TOWER ★ <b>124.55 (CTAF) 0</b>	GND CON <b>121.175</b>	UNICOM <b>122.95</b>
------------------------	---	--	---------------------------	-------------------------



ELEV 303	TDZE 300
----------	----------



CATEGORY	A	B	C	D
LPV DA		500-½	200 (200-½)	
LNAV/VNAV DA		595-½	295 (300-½)	
LNAV MDA	700-½ 400 (400-½)		700-¾ 400 (400-¾)	
CIRCLING	760-1 457 (500-1)	820-1 517 (600-1)	900-1½ 597 (600-1½)	900-2 597 (600-2)



SE-4, 14 MAY 2026 to 11 JUN 2026

SE-4, 14 MAY 2026 to 11 JUN 2026