

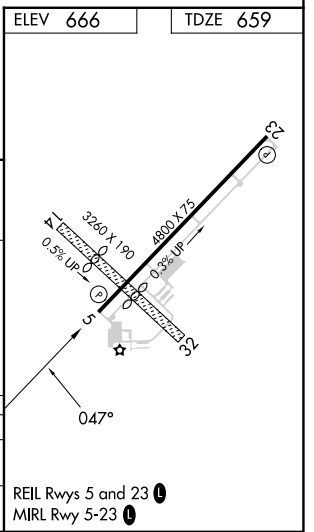
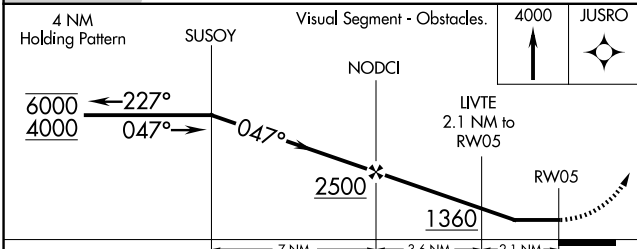
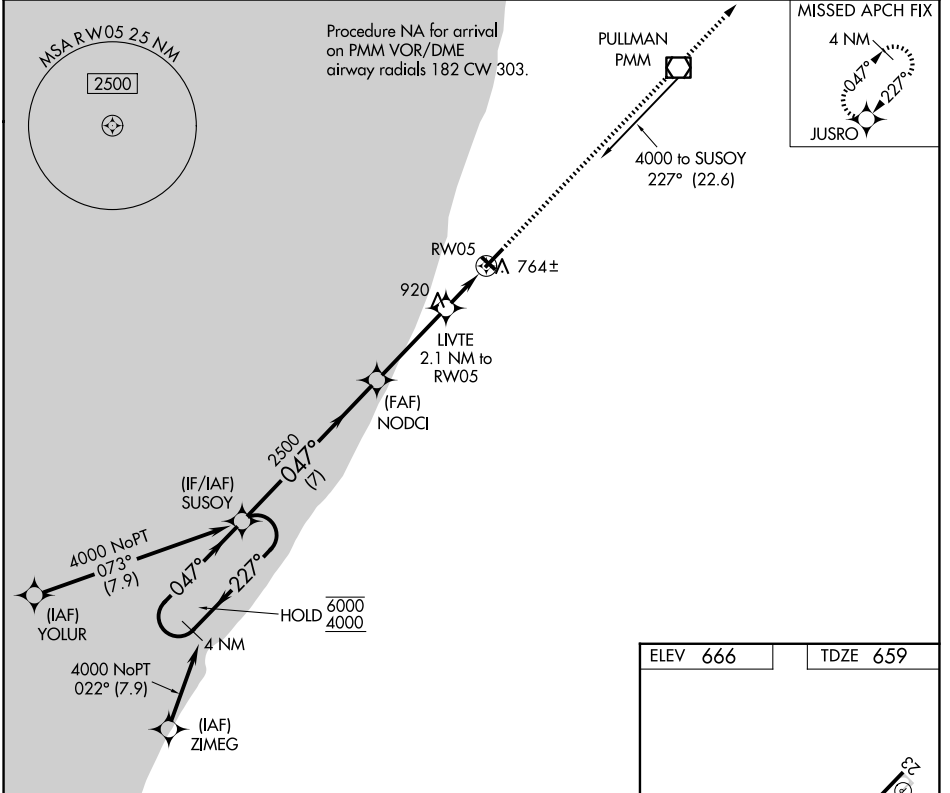
APP CRS	Rwy Ldg	<b>4800</b>
<b>047°</b>	TDZE	<b>659</b>
	Apt Elev	<b>666</b>

# RNAV (GPS) RWY 5

SOUTH HAVEN AREA RGNL (LWA)

RNP APCH - GPS.	MISSED APPROACH: Climb to 4000 direct JUSRO and hold, continue climb-in-hold to 4000.
▼ Rwy 5 helicopter visibility reduction below 3/4 SM NA. ▲ Circling NA to Rwys 14 and 32.	

AWOS-3P <b>118.025</b>	SOUTH BEND APP CON* <b>118.55 257.8</b>	UNICOM <b>122.8 (CTAF)</b>
---------------------------	--	-------------------------------



CATEGORY	A	B	C	D
LNVA MDA	1020-1		361 (400-1)	
CIRCLING	1120-1 454 (500-1)	1160-1 494 (500-1)	1440-2 1/4 774 (800-2 1/4)	1440-2 1/2 774 (800-2 1/2)

EC-1, 14 MAY 2026 to 11 JUN 2026

EC-1, 14 MAY 2026 to 11 JUN 2026