

| | | |
|---------------------------------|------------------------|---|
| WAAS CH 50426 W35A | APP CRS 358° | Rwy Ldg 8900 TDZE 4230 Apt Elev 4230 |
|---------------------------------|------------------------|---|

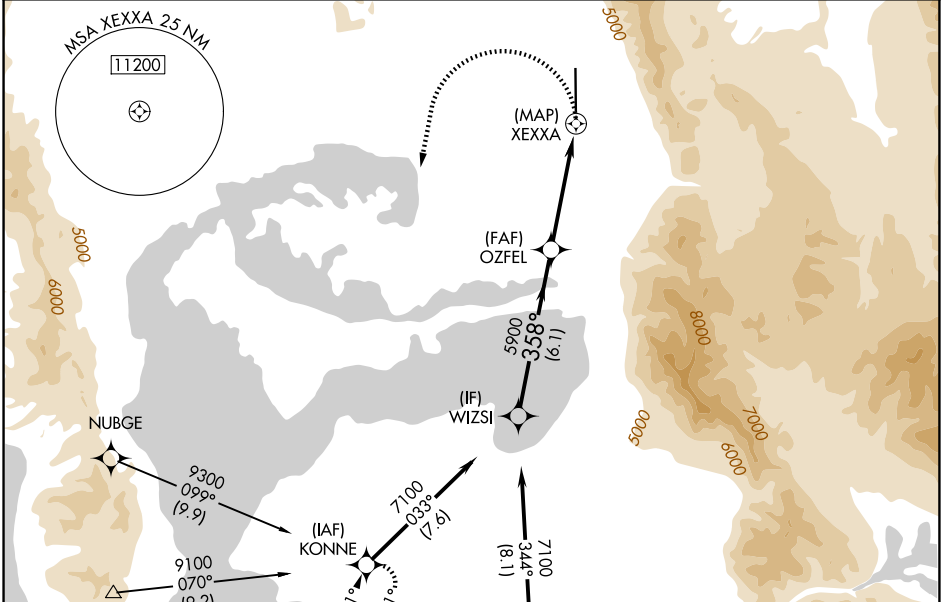
RNAV (GPS) RWY 35

BRIGHAM CITY RGNL (BMC)

⚠ When local altimeter setting not received, use Ogden altimeter setting and increase all MDA 100 feet, increase LP Cat C visibility ¼ mile, increase LNAV Cat B visibility ¼ mile, and Cat C visibility ½ mile, increase Circling Cat B visibility ¼ mile, and Cat C visibility ½ mile.
⚠ NA DME/DME RNP-0.3 NA. VDP NA with Ogden altimeter setting. Rwy 35 helicopter visibility reduction below ¾ SM NA. Circling NA for Cats B and C, east of Rwy 17-35.

MISSED APPROACH:
 Climbing left turn to 7100 direct KONNE and hold.

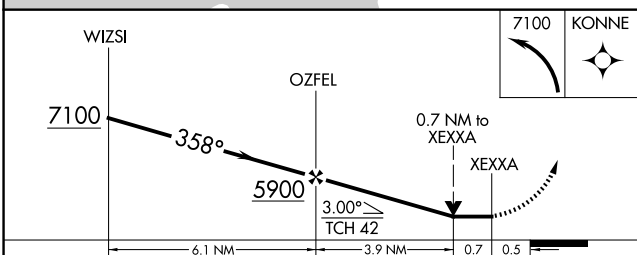
| | | | |
|--------------------------|--|--------------------------|----------------------------------|
| AWOS-3 135.075 | SALT LAKE CITY APP CON 121.1 | CLNC DEL 126.0 | UNICOM 123.05 (CTAF) 0 |
|--------------------------|--|--------------------------|----------------------------------|



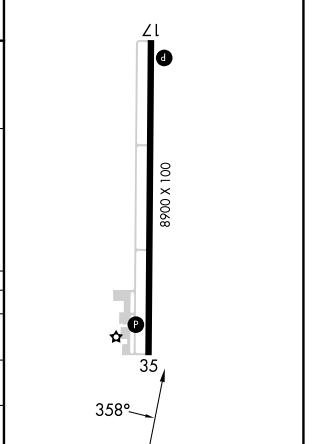
SW-4, 14 MAY 2026 to 11 JUN 2026

SW-4, 14 MAY 2026 to 11 JUN 2026

Procedure NA for arrivals on OGD VORTAC airway radials 302 CW 068.



| | |
|----------------------|-----------|
| ELEV 4230 | TDZE 4230 |
| MIRL Rwy 17-35 0 | |
| REIL Rws 17 and 35 0 | |



| CATEGORY | A | B | C | D |
|----------|--------|-------------|---------------------------|----|
| LP MDA | 4660-1 | 430 (500-1) | 4660-1¼ 430 (500-1¼) | NA |
| LNAV MDA | 4900-1 | 670 (700-1) | 4900-1⅞ 670 (700-1⅞) | NA |
| CIRCLING | 4900-1 | 670 (700-1) | 5460-2¼ 1230 (1300-2¼) | NA |