

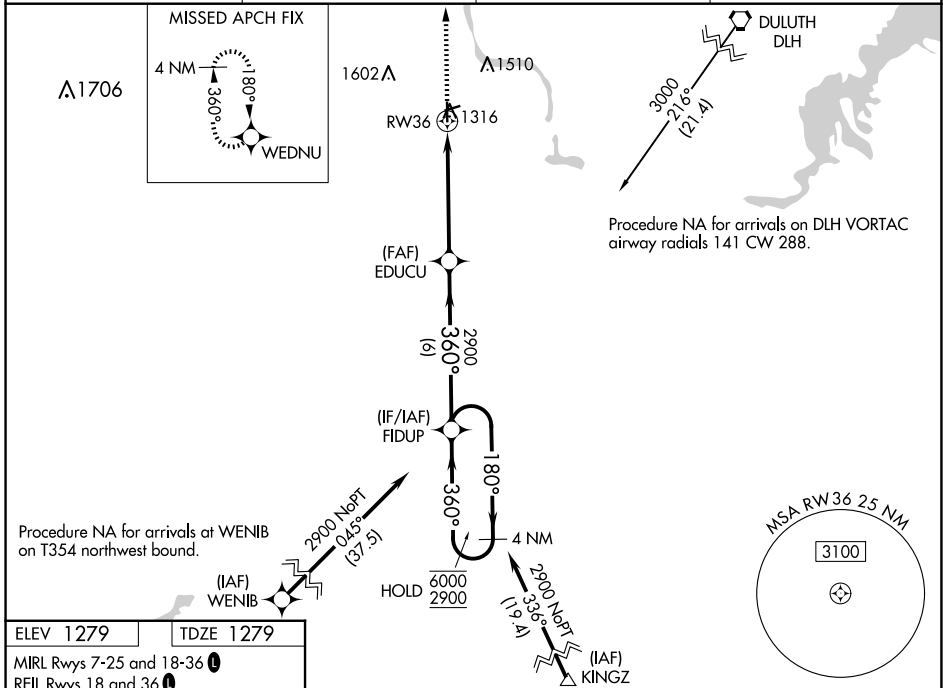
WAAS CH <b>82429</b> <b>W36A</b>	APP CRS <b>360°</b>	Rwy Idg TDZE Apt Elev	<b>4002</b> <b>1279</b> <b>1279</b>
--	------------------------	-----------------------------	---

# RNAV (GPS) RWY 36

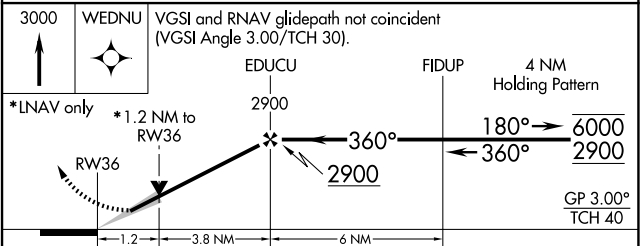
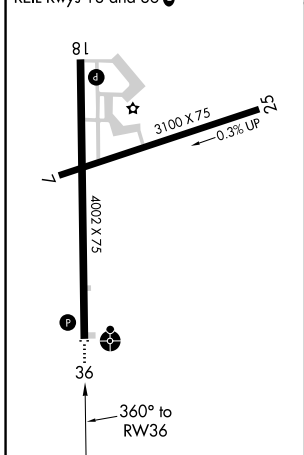
CLOQUET/CARLTON COUNTY (COQ)

RNP APCH.	ODALS	MISSED APPROACH: Climb to 3000 direct WEDNU and hold.
<p><b>▼</b> For uncompensated Baro-VNAV systems, LNAV/VNAV NA below -17°C or above 54°C. Inop table does not apply. Straight-in Rwy 7, 25 NA at night, Circling Rwy 7, 25 NA at night.</p>		

AWOS-3 <b>118.525</b>	DULUTH APP CON <b>125.45 233.7</b>	CINC DEL <b>122.15</b>	UNICOM <b>122.8 (CTAF)</b>
--------------------------	---------------------------------------	---------------------------	-------------------------------



ELEV 1279	TDZE 1279
MIRL Rwy 7-25 and 18-36	
REIL Rwy 18 and 36	



CATEGORY	A	B	C	D
LPV DA		1529-1	250 (300-1)	NA
LNAV/VNAV DA		1580-1	301 (400-1)	NA
LNAV MDA	1680-1	401 (500-1)	1680-1 <sup>1</sup> / <sub>8</sub> 401 (500-1 <sup>1</sup> / <sub>8</sub> )	NA
CIRCLING	1740-1 461 (500-1)	1860-1 581 (600-1)	1920-1 <sup>3</sup> / <sub>4</sub> 641 (700-1 <sup>3</sup> / <sub>4</sub> )	NA

NC-1, 14 MAY 2026 to 11 JUN 2026

NC-1, 14 MAY 2026 to 11 JUN 2026