

WAAS CH <b>90534</b> <b>W18A</b>	APP CRS <b>182°</b>	Rwy Ldg <b>4799</b> TDZE <b>675</b> Apt Elev <b>686</b>
--	------------------------	---

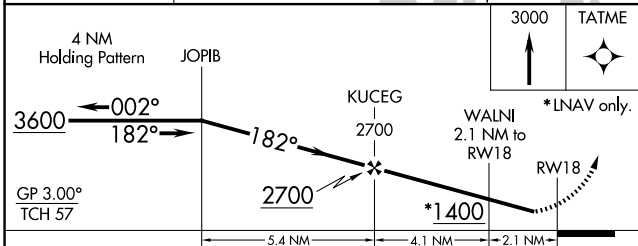
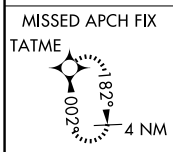
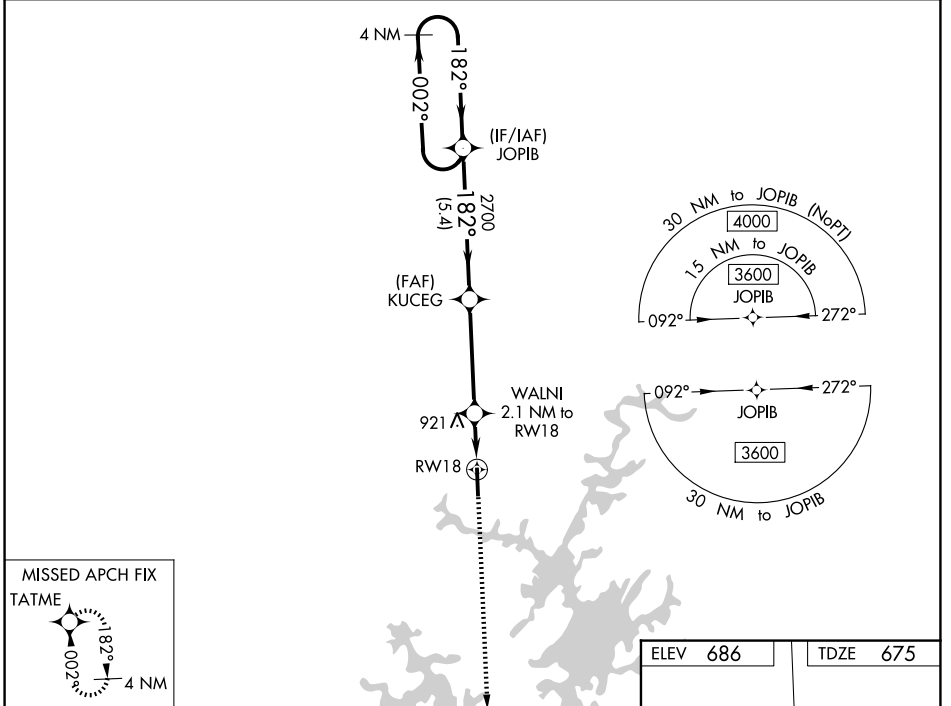
# RNAV (GPS) RWY 18

THOMAS C RUSSELL FLD (ALX)

**⚠** For uncompensated Baro-VNAV systems, LNAV/VNAV NA below -16°C (4°F) or above 54°C (130°F). Rwy 18 helicopter visibility reduction below 1 SM NA. DME/DME RNP-0.3 NA.

MISSED APPROACH: Climb to 3000 direct TATME and hold.

AWOS-3PT <b>118.325</b>	MONTGOMERY APP CON * <b>121.2 269.05</b>	UNICOM <b>122.7 (CTAF) ①</b>
----------------------------	---	---------------------------------



ELEV 686	TDZE 675
REIL Rwy 36 ①	MIRL Rwy 18-36 ①

CATEGORY	A	B	C	D
LPV DA		1061-1¼	386 (400-1¼)	
LNAV/ VNAV DA		1214-1¾	539 (600-1¾)	
LNAV MDA	1160-1	485 (500-1)	1160-1¾	485 (500-1½)
CIRCLING	1180-1 494 (500-1)	1240-1 554 (600-1)	1540-2½ 854 (900-2½)	1540-2¾ 854 (900-2¾)

SE-4, 14 MAY 2026 to 11 JUN 2026

SE-4, 14 MAY 2026 to 11 JUN 2026