

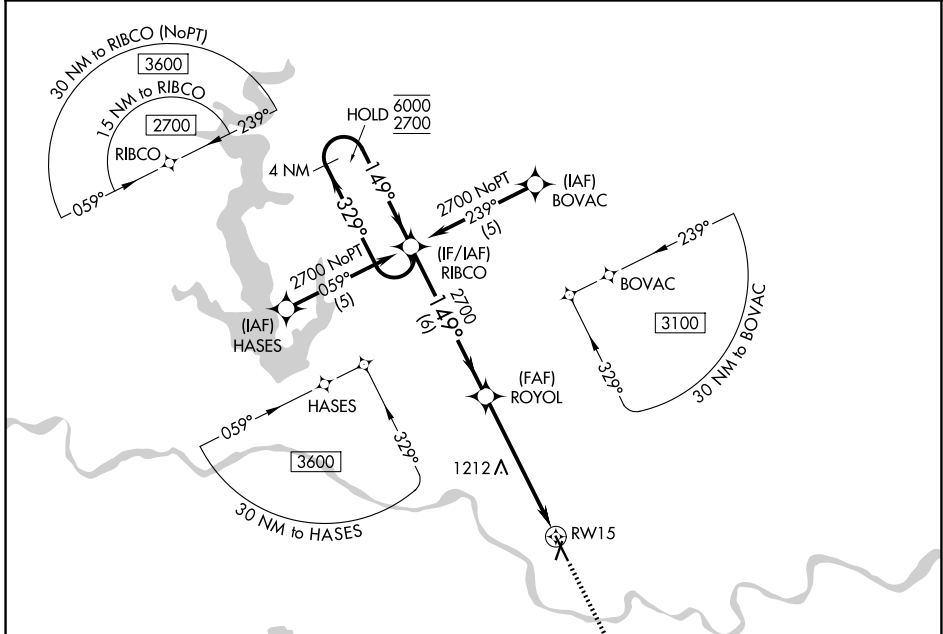
APP CRS 149°	Rwy Ldg 5701
	TDZE 832
	Apt Elev 833

RNAV (GPS) RWY 15

LAWRENCE RGNL (LWC)

RNP APCH - GPS.	MISSED APPROACH: Climb to 3100 direct GOLEY and hold.
Rwy 15 helicopter visibility reduction below 3/4 SM NA.	

ASOS 121.225	KANSAS CITY CENTER 123.8 343.7	UNICOM 123.0 (CTAF)
------------------------	--	--------------------------------

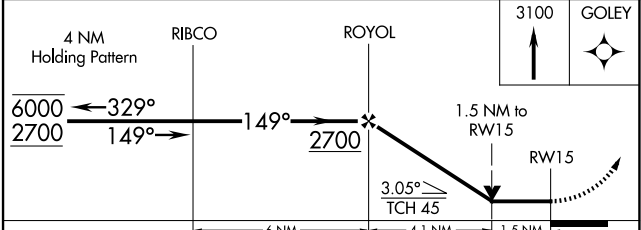
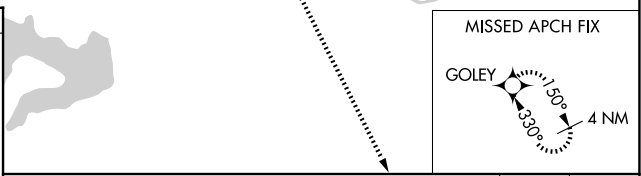


NC-2, 14 MAY 2026 to 11 JUN 2026

NC-2, 14 MAY 2026 to 11 JUN 2026

ELEV 833	TDZE 832
----------	----------

REIL Rws 1, 15, and 19
MIRL Rws 1-19 and 15-33



CATEGORY	A	B	C	D
LNAV MDA	1360-1	528 (600-1)	1360-1½ 528 (600-1½)	NA
CIRCLING	1420-1 587 (600-1)	1480-1 647 (700-1)	1620-2¼ 787 (800-2¼)	NA