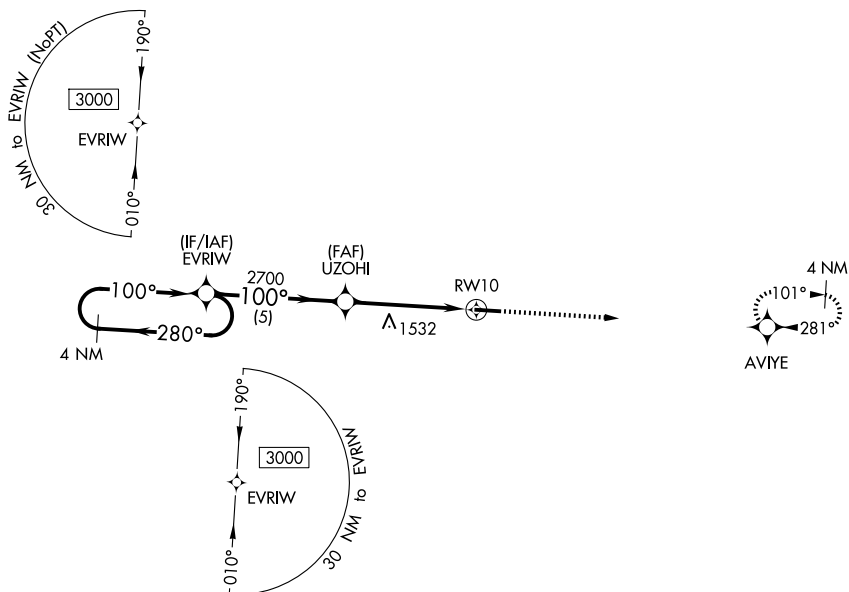


WAAS CH 77534 W10A	APP CRS 100°	Rwy Ldg TDZE Apt Elev	5000 1172 1184
--	------------------------	-----------------------------	---

RNAV (GPS) RWY 10

HILLSDALE MUNI (JYM)

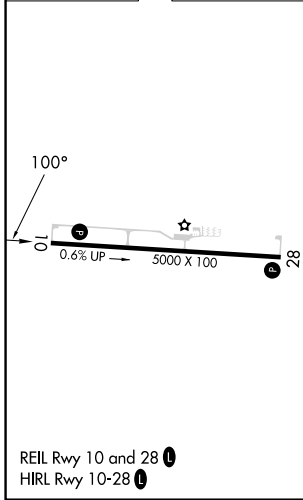
<p>▽ For uncompensated Baro-VNAV systems, LNAV/VNAV NA below -17°C (2°F) or above 54°C (130°F). DME/DME RNP-0.3 NA.</p>		<p>MISSED APPROACH: Climb to 3100 direct AVIYE and hold.</p>
<p>AWOS-3P 121.025</p>	<p>TOLEDO APP CON 134.35 317.55</p>	<p>UNICOM 122.8 (CTAF) 0</p>



EC-1, 14 MAY 2026 to 11 JUN 2026

EC-1, 14 MAY 2026 to 11 JUN 2026

ELEV 1184	TDZE 1172
-----------	-----------



4 NM Holding Pattern		EVRIW		UZOHI		RWY 10		3100	AVIYE
3000		2700		2700		*1.6 NM to RWY 10		↑	✦
100°		100°		100°					
280°		280°		280°					
GP 3.00°		TCH 46		5 NM		3.1 NM		1.6 NM	
CATEGORY	A	B	C	D					
LPV DA	1441-1		269 (300-1)		NA				
LNAV/VNAV DA	1601-1½		429 (500-1½)		NA				
LNAV MDA	1720-1	548 (600-1)		1720-1⅝		548 (600-1⅝)		NA	
CIRCLING	1720-1	536 (600-1)		1720-1⅝		536 (600-1⅝)		NA	