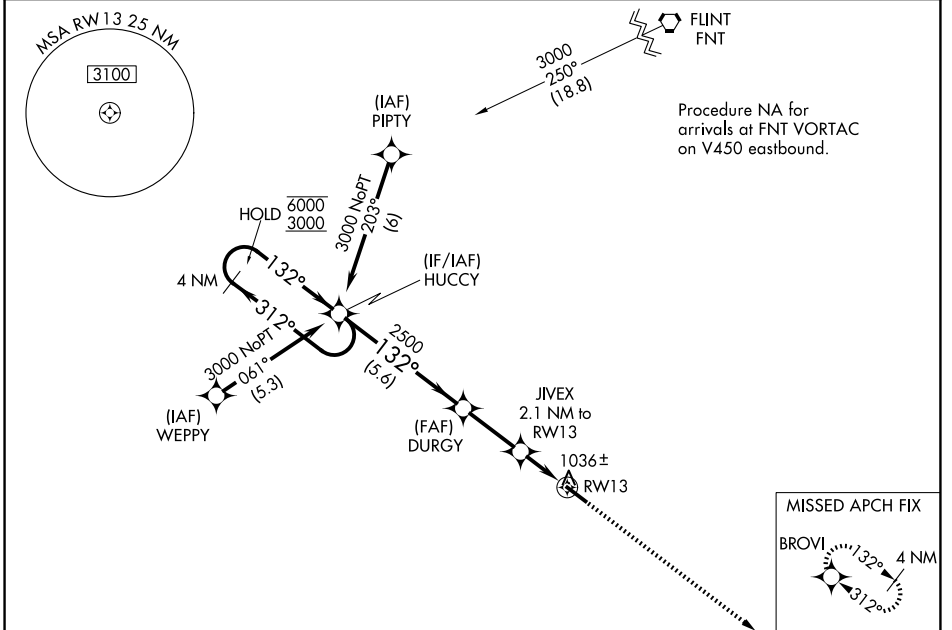


WAAS CH 69601 W13A	APP CRS 132°	Rwy Ldg 5002 TDZE 962 Apt Elev 962
--	------------------------	---

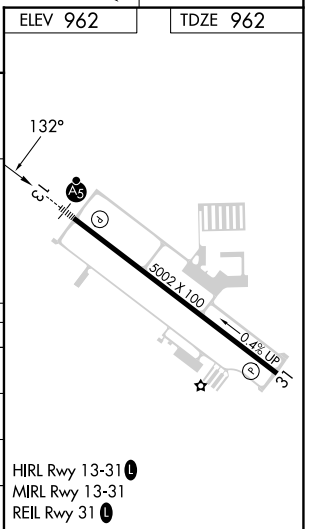
RNAV (GPS) RWY 13

LIVINGSTON COUNTY/SPENCER J HARDY (OZW)

RNP APCH - GPS.		MALSR	MISSED APPROACH: Climb to 2800 direct BROVI and hold.
<p>▼ For uncompensated Baro-VNAV systems, LNAV/VNAV NA below -16°C or above 37°C. For inop ALS, increase LNAV/VNAV all Cats visibility to ¾ SM.</p>			
AWOS-3P 118.875	DETROIT APP CON 132.35 284.0	CLNC DEL 121.725 (GCO)	UNICOM 123.0 (CTAF) ①



4 NM Holding Pattern		HUCCY		DURGY		JIVEX 2.1 NM to RWY 13		2800 BROVI	
6000 ← 312°		3000 → 132°		2500 ↘ 132°		*1660		*LNNAV only	
GP 3.00° TCH 48		5.6 NM		2.6 NM		1.2 NM		0.9 NM	
CATEGORY	A	B	C	D					
LPV DA		1162-½	200 (200-½)						
LNAV/VNAV DA		1212-½	250 (300-½)						
LNAV MDA		1300-½	338 (400-½)						
CIRCLING	1420-1	458 (500-1)	1600-1¾ 638 (700-1¾)	1600-2 638 (700-2)					



EC-1, 14 MAY 2026 to 11 JUN 2026

EC-1, 14 MAY 2026 to 11 JUN 2026