

WAAS CH 42544 W10A	APP CRS 096°	Rwy Ldg TDZE Apt Elev	4298 814 818
--	------------------------	-----------------------------	---

RNAV (GPS) RWY 10

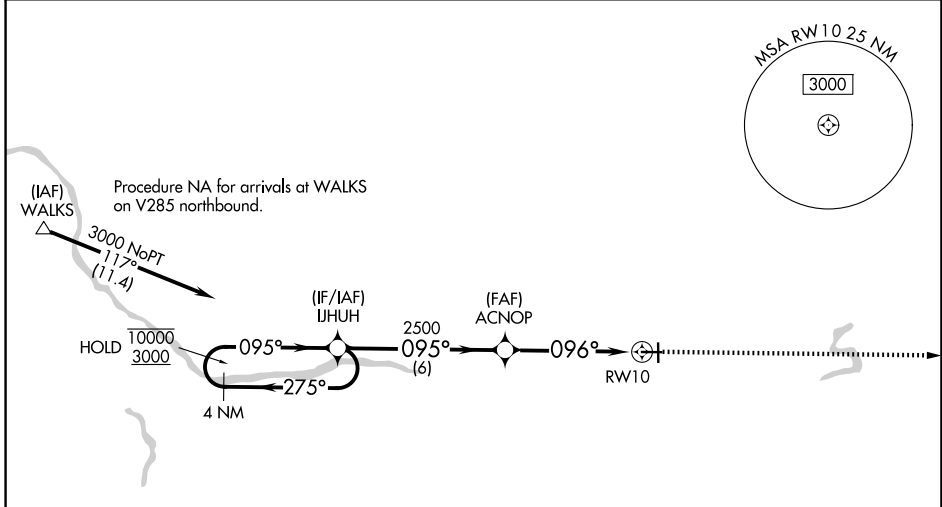
IONIA COUNTY (Y70)

RNP APCH - GPS.

⚠ Circling NA to Rws 18 and 36. Rwy 10 helicopter visibility reduction below 3/4 SM NA.
⚠ For uncompensated Baro-VNAV systems, LNAV/VNAV NA below -16°C or above 54°C.

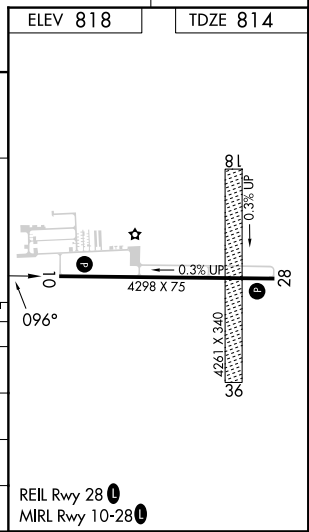
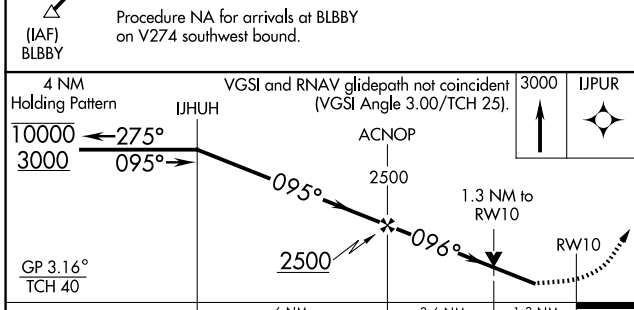
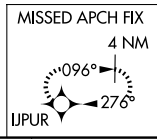
MISSED APPROACH: Climb to 3000 direct IJPUR and hold.

AWOS-3P 118.9	GREAT LAKES APP CON * 118.65 226.4	UNICOM 122.8 (CTAF)
-------------------------	--	-------------------------------



EC-1, 14 MAY 2026 to 11 JUN 2026

EC-1, 14 MAY 2026 to 11 JUN 2026



CATEGORY	A	B	C	D
LPV DA		1064-3/4	250 (300-3/4)	NA
LNAV/VNAV DA		1064-3/4	250 (300-3/4)	NA
LNAV MDA	1260-1	446 (500-1)	1260-1 3/8 446 (500-1 3/8)	NA
CIRCLING	1320-1	502 (600-1)	1340-1 1/2 522 (600-1 1/2)	NA