

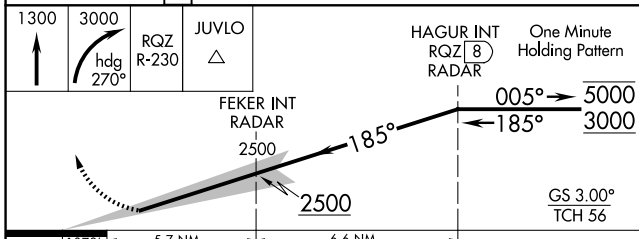
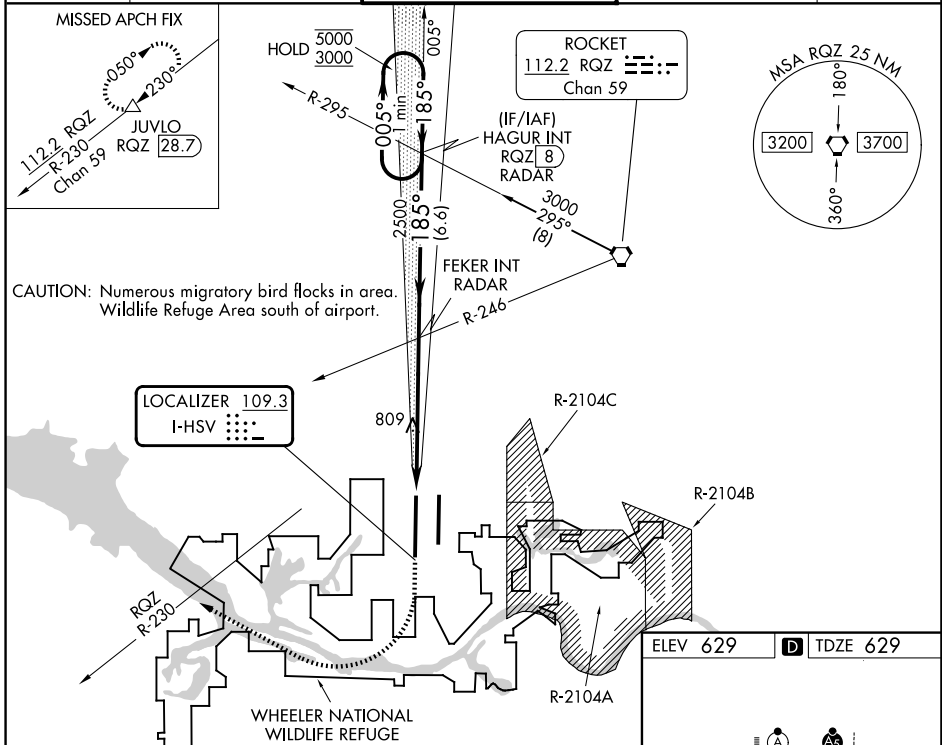
LOC I-HSV 109.3	APP CRS 185°	Rwy Ldg 12600
		TDZE 629
		Apt Elev 629

ILS RWY 18R (CAT II)

HUNTSVILLE INTL-CARL T JONES FLD (HSV)

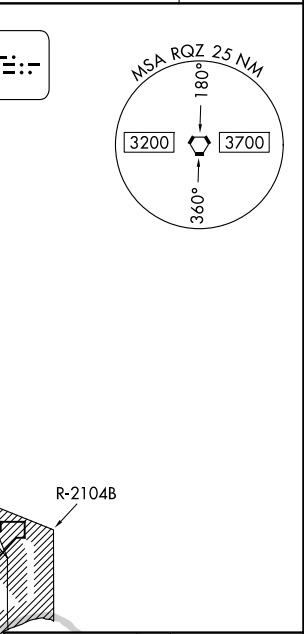
DME required. RADAR required for procedure entry.		ALSIF-2	MISSED APPROACH: Climb to 1300 then climbing right turn to 3000 on heading 270° and RQZ R-230 to JUVLO/RQZ 28.7 DME and hold.
Simultaneous approach authorized. DME from RQZ VORTAC. DME use requires simultaneous reception of I-HSV and RQZ DME.			

ATIS 121.25	HUNTSVILLE APP CON★ 125.6 354.1	HUNTSVILLE TOWER★ 127.6 (CTAF) 350.35	GND CON 121.9 269.525	UNICOM 122.95
-----------------------	---	---	---------------------------------	-------------------------

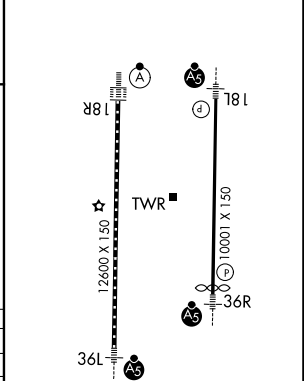


CATEGORY	A	B	C	D
S-ILS 18R	RA 105/12 100 DA 729			

CATEGORY II ILS - SPECIAL AIRCREW & AIRCRAFT CERTIFICATION REQUIRED



ELEV 629	TDZE 629
----------	----------



TDZL/RCLS Rwy 18R and 36L
HIRL Rwy 18L-36R and 18R-36L

SE-4, 14 MAY 2026 to 11 JUN 2026

SE-4, 14 MAY 2026 to 11 JUN 2026