

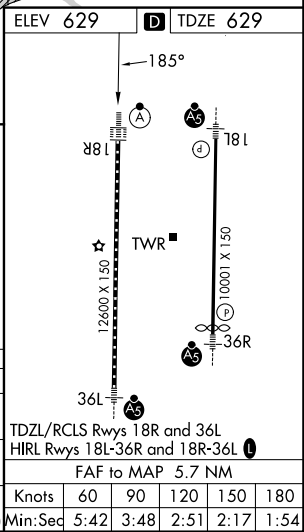
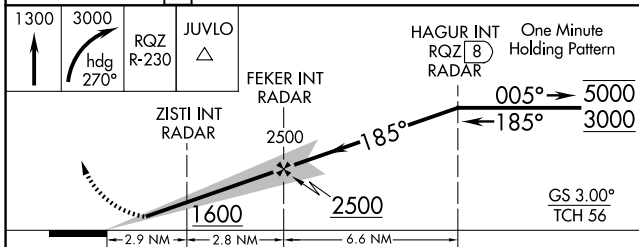
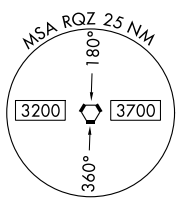
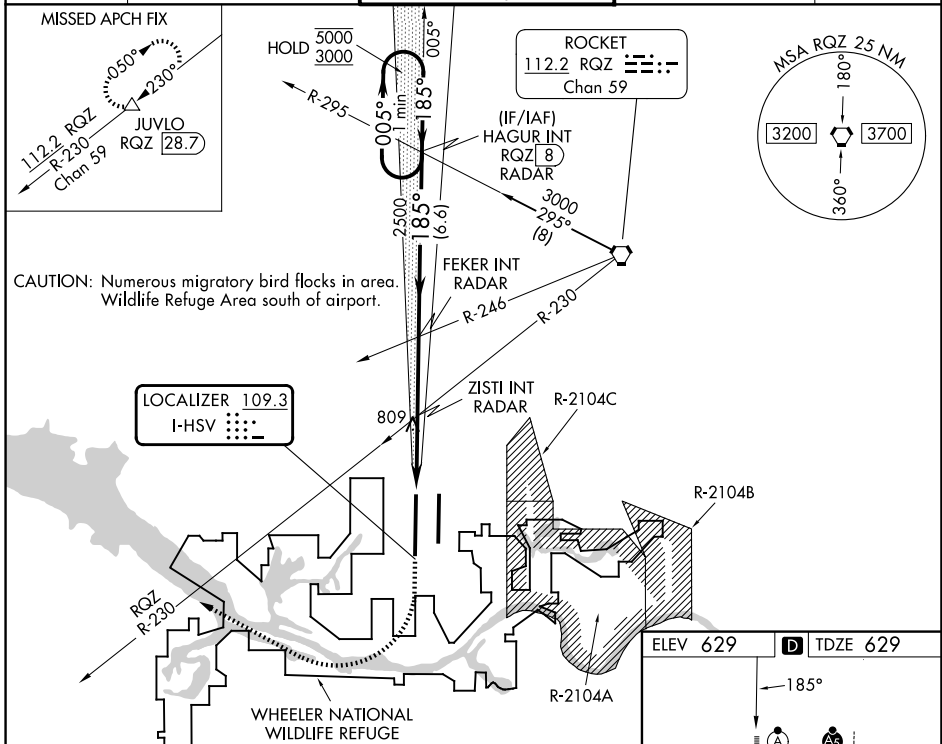
LOC I-HSV <b>109.3</b>	APP CRS <b>185°</b>	Rwy Ldg <b>12600</b> TDZE <b>629</b> Apt Elev <b>629</b>
---------------------------	------------------------	--

# ILS or LOC RWY 18R

HUNTSVILLE INTL-CARL T JONES FLD (HSV)

DME required. RADAR required for procedure entry.		ALSF-2 	MISSED APPROACH: Climb to 1300 then climbing right turn to 3000 on heading 270° and RQZ R-230 to JUVLO/RQZ 28.7 DME and hold.
	Circling NA for Cats C/D/E east of Rwy 18L-36R. Simultaneous approach authorized. For inop ALS, increase S-ILS 18R Cat E visibility to RVR 4000 and S-LOC 18R Cat E visibility to 1/4 SM. DME from RQZ VORTAC. DME use requires simultaneous reception of I-HSV and RQZ DME.		

ATIS <b>121.25</b>	HUNTSVILLE APP CON* <b>125.6 354.1</b>	HUNTSVILLE TOWER* <b>127.6 (CTAF) 350.35</b>	GND CON <b>121.9 269.525</b>	UNICOM <b>122.95</b>
-----------------------	---	---	---------------------------------	-------------------------



CATEGORY	A	B	C	D	E
S-ILS 18R	829/18 200 (200-1/2)				
S-LOC 18R	1060/24 431 (500-1/2)	1060/40 431 (500-3/4)			
CIRCLING	1160-1 531 (600-1)	1160-1 1/2 531 (600-1 1/2)	1240-2 611 (700-2)	1260-2 1/4 631 (700-2 1/4)	

SE-4, 14 MAY 2026 to 11 JUN 2026

SE-4, 14 MAY 2026 to 11 JUN 2026