

WAAS CH 99436 W35A	APP CRS 354°	Rwy Ldg TDZE Apt Elev	5506 1155 1160
--	------------------------	-----------------------------	---

RNAV (GPS) RWY 35

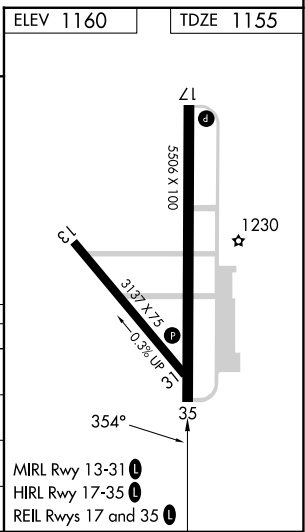
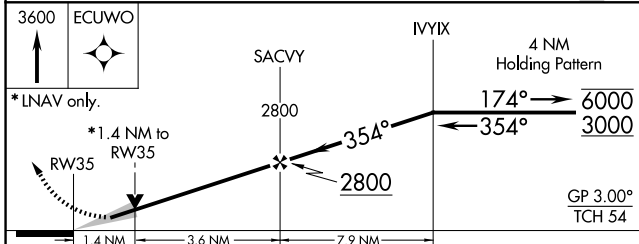
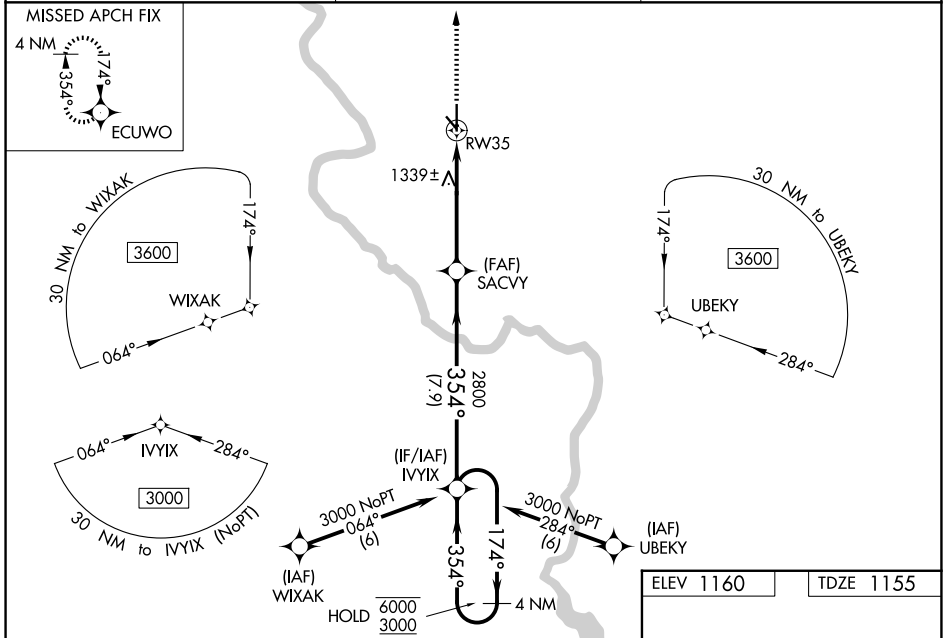
STROTHER FLD (WLD)

RNP APCH.

⚠ Baro-VNAV and VDP NA when using Wichita Dwight D Eisenhower NH altimeter setting.
⚠ For uncompensated Baro-VNAV systems, LNAV/VNAV NA below -15°C or above 54°C.
 When local altimeter setting not received, use Wichita Dwight D Eisenhower NH altimeter setting: increase LPV DA to 1509 feet and all visibilities ¼ SM; increase LNAV/VNAV DA to 1557 feet and all visibilities ¼ SM; increase all MDA 120 feet, LNAV Cat C visibility ⅓ SM and Circling Cat C visibility ¼ SM.

MISSED APPROACH:
Climb to 3600 direct ECUWO and hold.

ASOS 118.025	KANSAS CITY CENTER 127.8 319.1	UNICOM 122.8 (CTAF) 0
------------------------	--	---------------------------------



CATEGORY	A	B	C	D
LPV DA	1405-¾	250 (300-¾)		NA
LNAV/VNAV DA	1453-1	298 (300-1)		NA
LNAV MDA	1640-1	485 (500-1)	1640-1⅓ 485 (500-1⅓)	NA
CIRCLING	1680-1	520 (600-1)	1680-1½ 520 (600-1½)	NA

NC-2, 14 MAY 2026 to 11 JUN 2026

NC-2, 14 MAY 2026 to 11 JUN 2026