

(FEVTA.FEVTA1) 26134

FEVTA ONE ARRIVAL (RNAV)

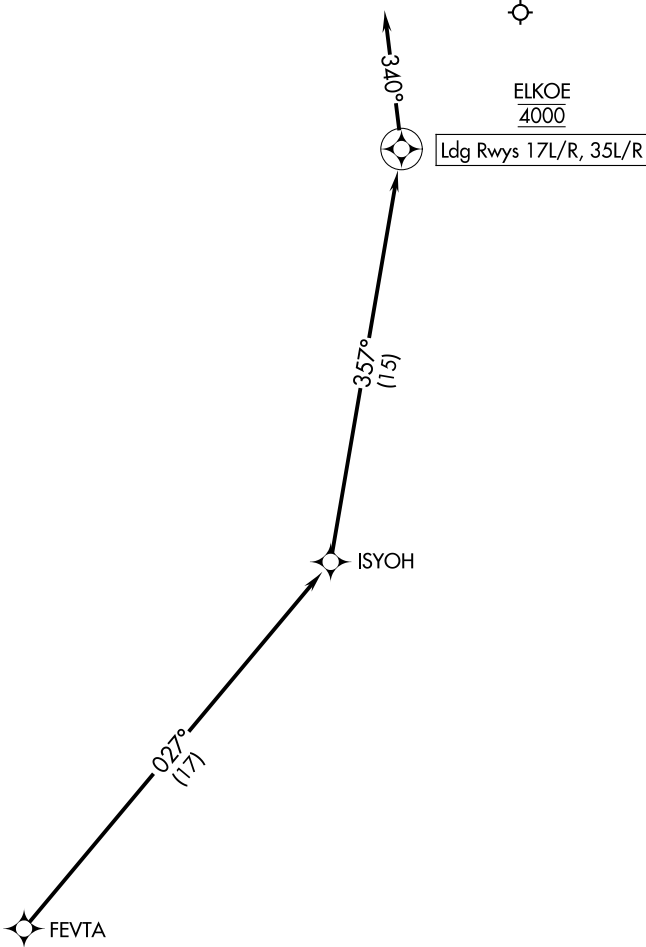
AL-5490 (FAA)

SACRAMENTO INTL (SMF)
SACRAMENTO, CALIFORNIA

NORCAL APP CON
125.25 257.9
D-ATIS
126.75
GND CON
121.7 256.7
CAPITOL TOWER
125.7 256.7

RNAV 1- DME/DME/IRU or GPS.

RADAR required.



NOTE: Chart not to scale.

ARRIVAL ROUTE DESCRIPTION

From FEVTA on track 027° to ISYOH, then on track 357° to cross ELKOE at 4000.

LANDING RUNWAY 17L/R, 35L/R: From ELKOE, then on track 340°. Expect RADAR vectors to final approach course.

FEVTA ONE ARRIVAL (RNAV)
(FEVTA.FEVTA1) 14MAY26

SACRAMENTO, CALIFORNIA
SACRAMENTO INTL (SMF)

SW-2, 14 MAY 2026 to 11 JUN 2026

SW-2, 14 MAY 2026 to 11 JUN 2026