

|   |                        |   |
|---|------------------------|---|
| LOC/DME I-MDK<br><b>111.75</b><br>Chan 54 (Y) | APP CRS<br><b>168°</b> | Rwy Ldg <b>8605</b><br>TDZE <b>27</b><br>Apt Elev <b>27</b> |
|---|------------------------|---|

# ILS RWY 17L (SA CAT II)

SACRAMENTO INTL (SMF)

Aircraft not GPS equipped - RADAR required for procedure entry.  
DME or RADAR required. RNP APCH-GPS. From TENCO.

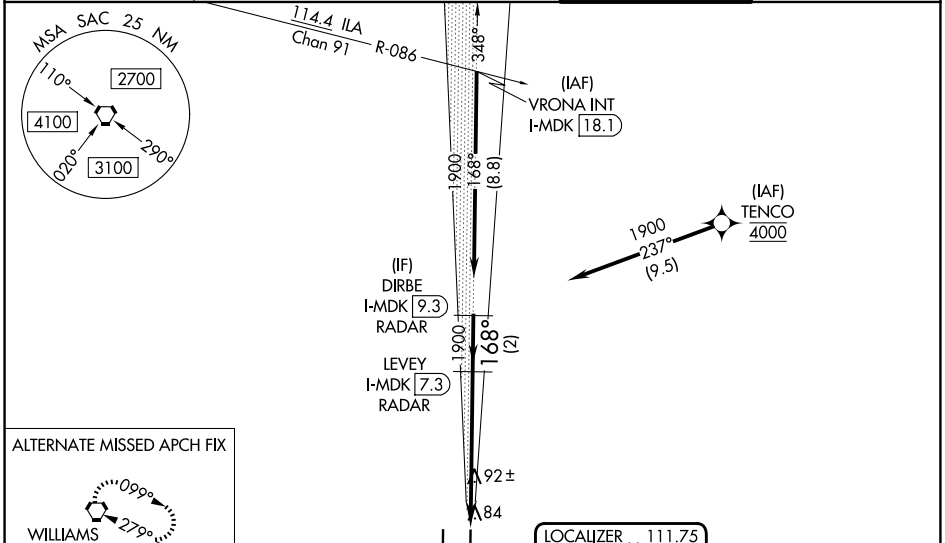
Simultaneous approach authorized.  
Requires specific OPSPEC, MSPEC or LOA approval.

MALSR

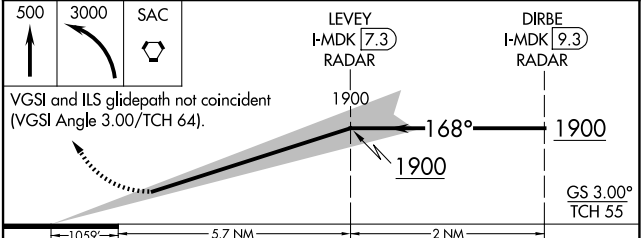
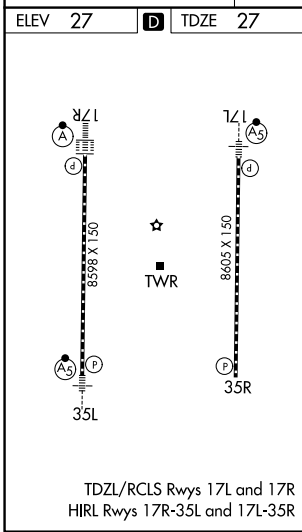
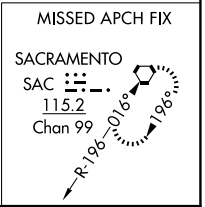
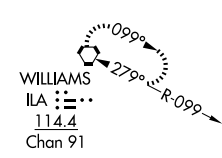


MISSED APPROACH: Climb to 500 then climbing left turn to 3000 direct SAC VORTAC and hold.

|                         |  |                                     |                               |
|-------------------------|--|-------------------------------------|-------------------------------|
| D-ATIS<br><b>126.75</b> | NORCAL APP CON<br><b>125.4 259.1 (W-NE) 125.25 257.9 (SW)<br/>127.4 317.5 (E-SE)</b> | CAPITOL TOWER<br><b>125.7 256.7</b> | GND CON<br><b>121.7 256.7</b> |
|-------------------------|--|-------------------------------------|-------------------------------|



ALTERNATE MISSED APCH FIX



|           |                      |   |   |   |
|-----------|----------------------|---|---|---|
| CATEGORY  | A                    | B | C | D |
| S-ILS 17L | RA 108/12 100 DA 127 |   |   |   |

**SA CATEGORY II ILS-SPECIAL AIRCREW & AIRCRAFT CERTIFICATION REQUIRED**

SW-2, 14 MAY 2026 to 11 JUN 2026

SW-2, 14 MAY 2026 to 11 JUN 2026