

LOC/DME I-SMF 111.1 Chan 48	APP CRS 168°	Rwy Ldg 8598 TDZE 25 Apt Elev 27
--	------------------------	--

ILS RWY 17R (CAT II & III)

SACRAMENTO INTL (SMF)

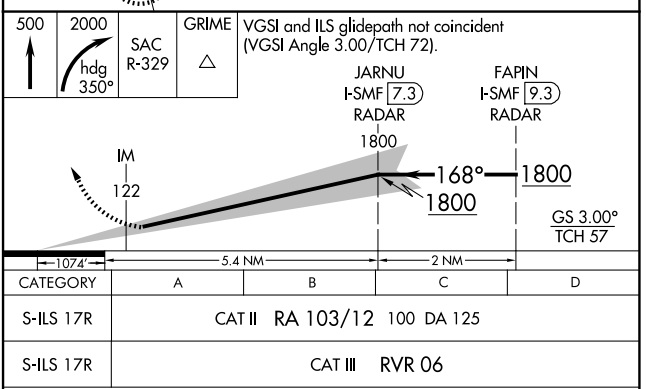
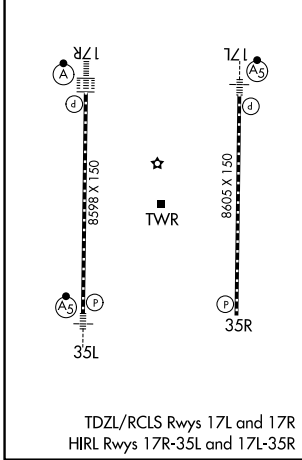
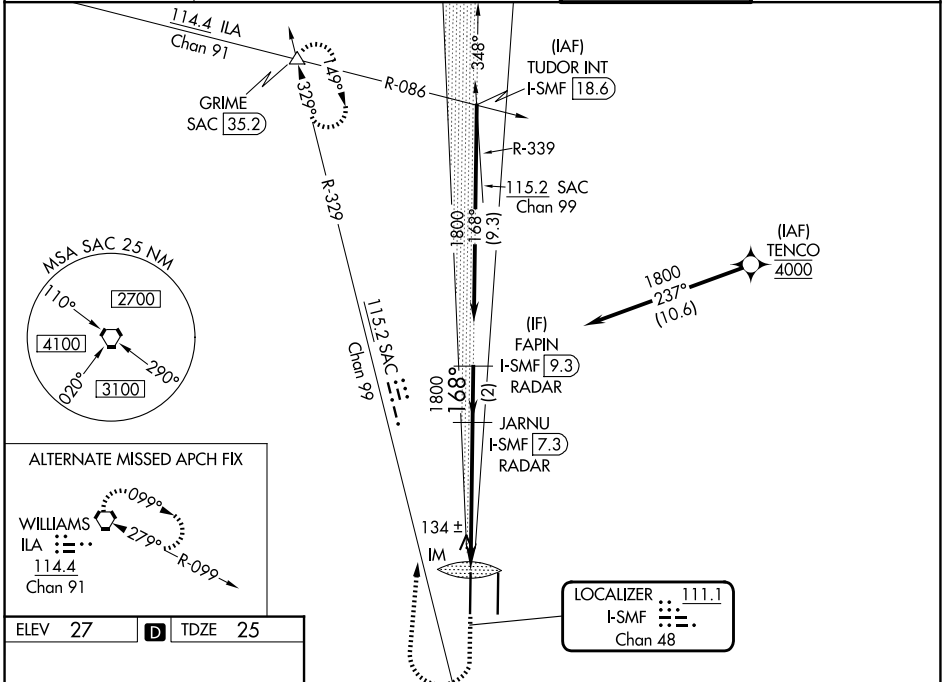
Aircraft not GPS equipped - RADAR required for procedure entry. DME or RADAR required. RNP APCH-GPS. From TENCO.

ALSF-2

Simultaneous approach authorized.

MISSED APPROACH: Climb to 500 then climbing right turn to 2000 on heading 350° and SAC VORTAC R-329 to GRIME INT/SAC 35.2 DME and hold.

D-ATIS 126.75	NORCAL APP CON 125.4 259.1 (W-NE) 125.25 257.9 (SW) 127.4 317.5 (E-SE)	CAPITOL TOWER 125.7 256.7	GND CON 121.7 256.7
-------------------------	--	-------------------------------------	-------------------------------



500	2000	SAC R-329	GRIME	VGSI and ILS glidepath not coincident (VGSI Angle 3.00/TCH 72).
		JARNU I-SMF (7.3) RADAR	FAPIN I-SMF (9.3) RADAR	
		1800	168°	1800
		GS 3.00°	TCH 57	
CATEGORY	A	B	C	D
S-ILS 17R	CAT II RA 103/12 100 DA 125			
S-ILS 17R	CAT III RVR 06			

CATEGORY II & III ILS - SPECIAL AIRCREW & AIRCRAFT CERTIFICATION REQUIRED

SW-2, 14 MAY 2026 to 11 JUN 2026

SW-2, 14 MAY 2026 to 11 JUN 2026