


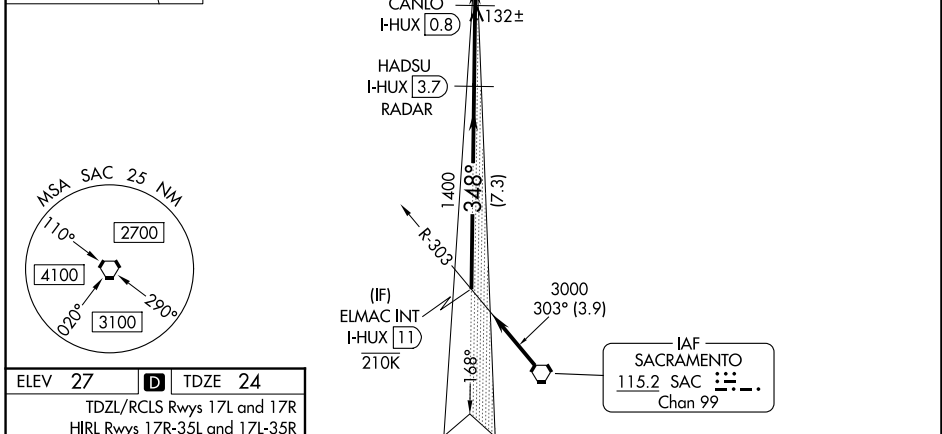
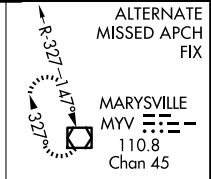
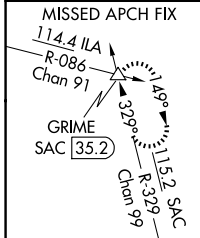
LOC/DME I-HUX 111.1 Chan 48	APP CRS 348°	Rwy Ldg 8598 TDZE 24 Apt Elev 27
---	------------------------	---

ILS or LOC RWY 35L

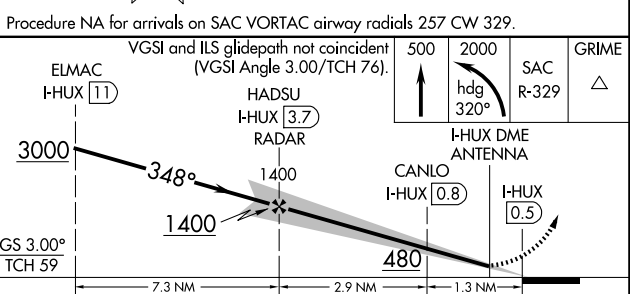
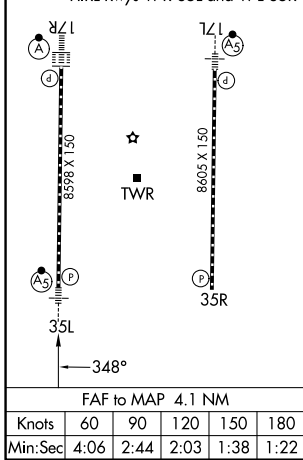
SACRAMENTO INTL (SMF)

DME required.	<p>▼ Circling NA east of Rwy 17R-35L. Autopilot coupled approach NA below 312 MSL. For inop ALS, increase S-LOC 35L Cats C/D visibility to RVR 4500. * RVR 1800 authorized with the use of FD or AP or HUD to DA.</p>	<p>MALSR</p> 	<p>MISSED APPROACH: Climb to 500 then climbing left turn to 2000 on heading 320° and SAC VORTAC R-329 to GRIME INT/SAC 35.2 DME and hold.</p>
---------------	---	--	---

D-ATIS 126.75	NORCAL APP CON 125.4 259.1 (W-NE) 125.25 257.9 (SW) 127.4 317.5 (E-SE)	CAPITOL TOWER 125.7 256.7	GND CON 121.7 256.7
-------------------------	--	-------------------------------------	-------------------------------



ELEV 27	D	TDZE 24
TDZL/RCLS Rwy 17L and 17R HIRL Rwy 17R-35L and 17L-35R		



CATEGORY	A	B	C	D
S-ILS 35L*	224/24 200 (200-1/2)			
S-LOC 35L	340/24 316 (400-1/2)			
CIRCLING	440-1 413 (500-1)	480-1 453 (500-1)	480-1 1/2 453 (500-1 1/2)	580-2 553 (600-2)

SW-2, 14 MAY 2026 to 11 JUN 2026

SW-2, 14 MAY 2026 to 11 JUN 2026