

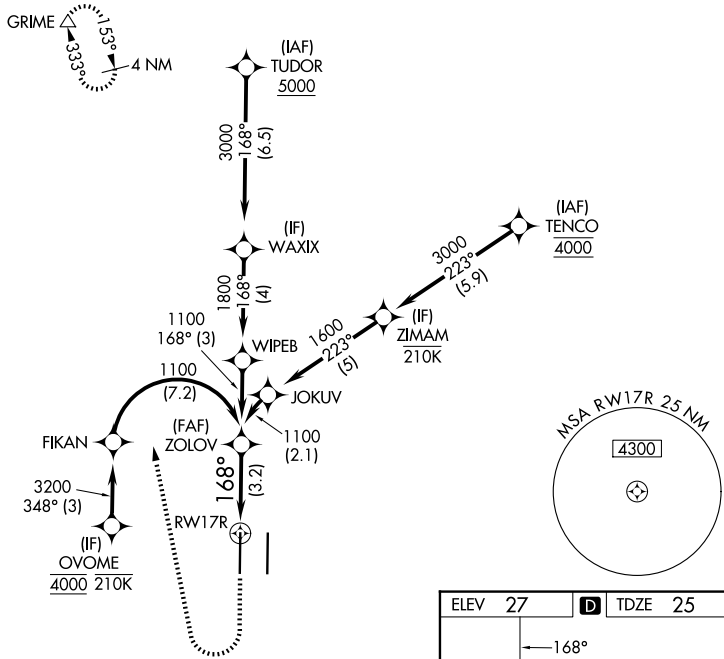
RNAV (RNP) Z RWY 17R

SACRAMENTO INTL (SMF)

APP CRS	Rwy Ldg	8598
168°	TDZE	25
	Apt Elev	27

RNP AR APCH-GPS.	<p>▼ For uncompensated Baro-VNAV systems, procedure NA below -2°C or above 54°C. For inop ALS, increase RNP 0.10 all Cats visibility to RVR 4000; increase RNP 0.18 all Cats visibility to RVR 4500 and RNP 0.30 all Cats visibility to RVR 5500.</p>	<p>ALSF-2</p>	<p>MISSED APPROACH: Climb to 500 then climbing right turn to 2000 direct GRIME and hold.</p>
------------------	---	---------------	--

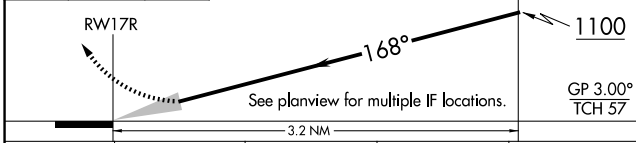
D-ATIS	NORCAL APP CON	CAPITOL TOWER	GND CON
126.75	125.4 259.1 (W-NE) 125.25 257.9 (SW) 127.4 317.5 (E-SE)	125.7 256.7	121.7 256.7



SW-2, 14 MAY 2026 to 11 JUN 2026

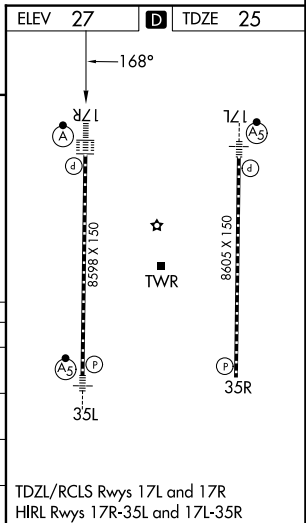
SW-2, 14 MAY 2026 to 11 JUN 2026

500	2000	GRIME	VGSI and RNAV glidepath not coincident (VGSI Angle 3.00/TCH 72).



CATEGORY	A	B	C	D
RNP 0.10 DA		275/24	250 (300-½)	
RNP 0.18 DA		326/24	301 (300-½)	
RNP 0.30 DA		385/30	360 (400-⅓)	

AUTHORIZATION REQUIRED



TDZL/RCLS Rwy 17L and 17R
HIRL Rwy 17R-35L and 17L-35R