

SW-2, 14 MAY 2026 to 11 JUN 2026

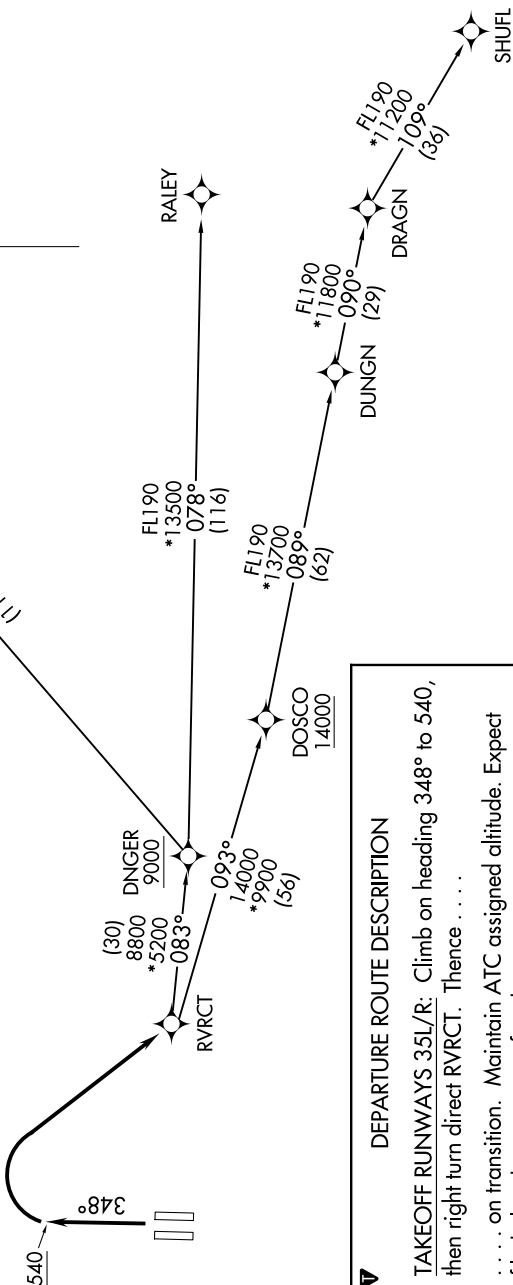
**TOP ALTITUDE:  
ASSIGNED BY ATC**

RNAV - DME/DME/IRU or GPS

RADAR required for non-GPS equipped aircraft.

**TAKEOFF MINIMUMS**

Rwys 35L/R: Standard with minimum climb of 500' per NM to 540.



NORCAL DEP CON  
127.4 317.5

**DEPARTURE ROUTE DESCRIPTION**

**TAKEOFF RUNWAYS 35L/R:** Climb on heading 348° to 540, then right turn direct RVRCT. Thence . . . . .

. . . . on transition. Maintain ATC assigned altitude. Expect filed altitude 5 minutes after departure.

**MACUS TRANSITION (RVRCT4.MACUS)**

**RALEY TRANSITION (RVRCT4.RALEY)**

**SHUFL TRANSITION (RVRCT4.SHUFL)**

NOTE: Chart not to scale.

SW-2, 14 MAY 2026 to 11 JUN 2026