

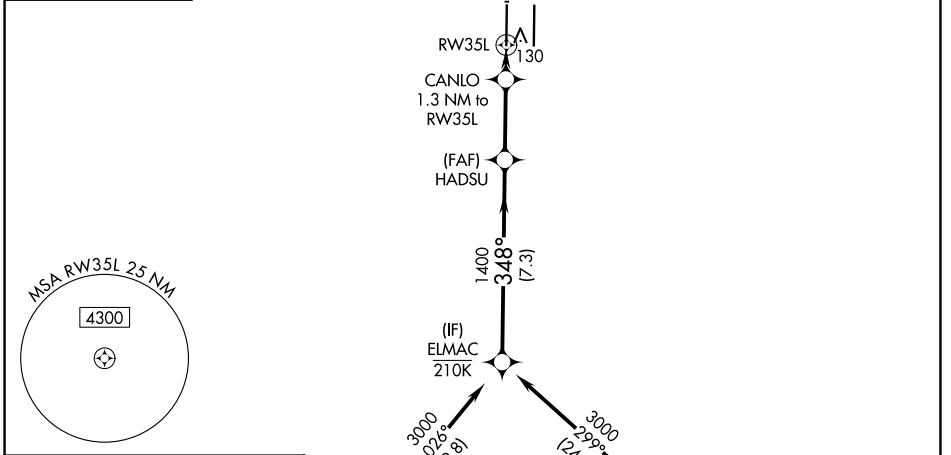
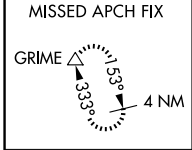
WAAS CH 86602 W35A	APP CRS 348°	Rwy Ldg TDZE Apt Elev	8598 24 27
--	------------------------	-----------------------------	---------------------------------------

RNAV (GPS) Y RWY 35L

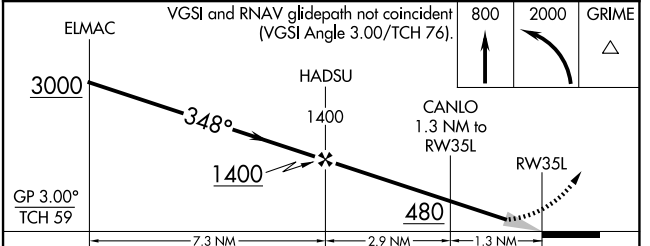
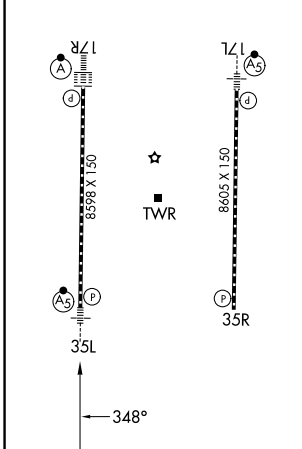
SACRAMENTO INTL (SMF)

RNP APCH-GPS.	MALSR	MISSED APPROACH: Climb to 800 then climbing left turn to 2000 direct GRIME and hold.
<p>▼ Circling NA east of Rwy 17R-35L. For uncompensated Baro-VNAV systems, LNAV/VNAV NA below -2°C or above 54°C. For inop ALS, increase LNAV/VNAV all Cats visibility to RVR 4500 and increase LNAV Cat D visibility to RVR 5500. *RVR 1800 authorized with use of FD or AP or HUD to DA.</p>		

D-ATIS 126.75	NORCAL APP CON 125.4 259.1 (W-NE) 125.25 257.9 (SW) 127.4 317.5 (E-SE)	CAPITOL TOWER 125.7 256.7	GND CON 121.7 256.7
-------------------------	--	-------------------------------------	-------------------------------



ELEV 27	D	TDZE 24
TDZL/RCLS Rwys 17L and 17R		
HIRL Rwys 17R-35L and 17L-35R		



CATEGORY	A	B	C	D
LPV DA*		224/24	200 (200-½)	
LNAV/VNAV DA		311/24	287 (300-½)	
LNAV MDA	380/24	356 (400-½)	380/30	356 (400-⅝)
CIRCLING	440-1 413 (500-1)	480-1 453 (500-1)	480-1½ 453 (500-1½)	580-2 553 (600-2)

SW-2, 14 MAY 2026 to 11 JUN 2026

SW-2, 14 MAY 2026 to 11 JUN 2026